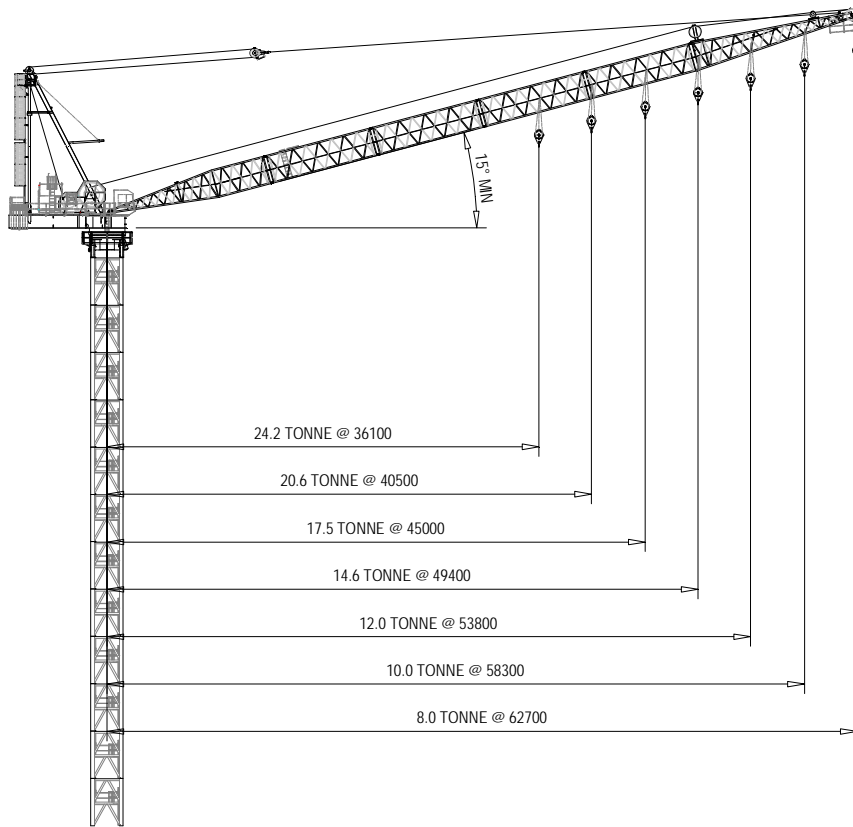


# TECHNICAL DATA SHEET

# M760F.H25



**Design wind speed**  
**In service - 20m/s**  
**Out of service - 42m/s**

Various options in bottom structure configuration (such as freestanding, external climbing and internal climbing) and crane parking position available to suit site condition. Contact Favelle Favco sales and service representatives for consultation.

## SAFE WORKING LOAD - HOIST WINCH 25 TONNE x 3-FALL

Boom Length	36.6		41.2		45.8		50.4		55.0		59.6		64.2	
Minimum Radius	3.4		3.8		4.1		4.5		4.8		5.2		5.5	
Radius	SWL	Angle	SWL	Angle	SWL	Angle	SWL	Angle	SWL	Angle	SWL	Angle	SWL	Angle
7.5	64.0	79.3	64.0	80.5	64.0	81.5	64.0	82.3	64.0	82.9	53.9	83.5	44.5	83.9
10.0	64.0	75.3	64.0	77.0	64.0	78.3	64.0	79.4	61.3	80.3	51.2	81.0	42.3	81.7
12.5	64.0	71.2	64.0	73.4	64.0	75.1	64.0	76.5	57.4	77.6	48.4	78.6	40.2	79.4
15.0	64.0	67.0	64.0	69.7	64.0	71.8	61.9	73.5	53.5	74.9	45.1	76.1	37.6	77.1
17.5	60.0	62.7	59.2	66.0	58.4	68.5	57.1	70.5	49.7	72.2	42.1	73.6	35.1	74.8
20.0	51.4	58.2	50.7	62.1	49.9	65.1	49.1	67.5	46.3	69.5	39.5	71.1	32.9	72.5
22.5	44.7	53.5	44.0	58.1	43.3	61.6	42.5	64.4	41.6	66.7	37.6	68.6	30.9	70.2
25.0	39.4	48.4	38.7	53.9	38.0	58.0	37.3	61.2	36.3	63.8	35.7	66.0	29.0	67.8
27.5	35.1	43.0	34.4	49.5	33.7	54.2	33.0	57.9	32.1	60.9	31.5	63.3	27.3	65.3
30.0	31.5	36.9	30.8	44.7	30.1	50.3	29.4	54.5	28.5	57.8	27.9	60.6	25.7	62.9
32.5	28.5	29.7	27.8	39.5	27.1	46.1	26.4	50.9	25.5	54.7	25.0	57.8	24.2	60.3
35.0	26.0	20.5	25.3	33.7	24.5	41.5	23.9	47.1	23.0	51.4	22.5	54.9	21.7	57.7
37.5			23.1	26.8	22.4	36.6	21.7	43.1	20.9	48.0	20.3	51.9	19.6	55.0
40.0			21.3	17.5	20.5	30.9	19.8	38.8	19.0	44.4	18.4	48.8	17.7	52.3
42.5					18.9	24.2	18.2	34.0	17.3	40.6	16.8	45.5	16.1	49.4
45.0							16.7	28.5	15.9	36.4	15.3	42.0	14.6	46.4
47.5							15.5	21.8	14.6	31.7	14.0	38.3	13.3	43.2
50.0									13.5	26.4	12.9	34.2	12.2	39.9
52.5									12.5	19.7	11.8	29.7	11.1	36.2
55.0											11.0	24.4	10.2	32.3
57.5											10.2	17.7	9.4	27.8
60.0													8.7	22.6
Maximum Radius	24.2	15.0	20.6	15.0	17.5	15.0	14.6	15.0	12.0	15.0	10.0	15.0	8.0	15.0
	36.1		40.5		45.0		49.4		53.8		58.3		62.7	

Dimension in unit of meter. Rated load in unit of tonne. Angle in unit of degree.

## SAFE WORKING LOAD - HOIST WINCH 25 TONNE x 2-FALL

Boom Length	36.6		41.2		45.8		50.4		55.0		59.6		64.2	
Minimum Radius	3.4		3.8		4.1		4.5		4.8		5.1		5.5	
Radius	SWL	Angle	SWL	Angle	SWL	Angle	SWL	Angle	SWL	Angle	SWL	Angle	SWL	Angle
7.5	50.0	79.3	50.0	80.5	50.0	81.5	50.0	82.3	50.0	82.9	50.0	83.5	43.1	83.9
10.0	50.0	75.3	50.0	77.0	50.0	78.3	50.0	79.4	50.0	80.3	49.2	81.0	41.0	81.7
12.5	50.0	71.2	50.0	73.4	50.0	75.1	50.0	76.5	50.0	77.6	46.6	78.6	39.1	79.4
15.0	50.0	67.0	50.0	69.7	50.0	71.8	50.0	73.5	50.0	74.9	43.5	76.1	36.6	77.1
17.5	50.0	62.7	50.0	66.0	50.0	68.5	50.0	70.5	50.0	72.2	40.7	73.6	34.2	74.8
20.0	50.0	58.2	50.0	62.1	49.6	65.1	48.9	67.5	46.3	69.5	38.1	71.1	32.1	72.5
22.5	44.5	53.5	43.9	58.1	43.1	61.6	42.5	64.4	41.6	66.7	35.6	68.6	30.2	70.2
25.0	39.3	48.4	38.7	53.9	38.0	58.0	37.3	61.2	36.4	63.8	33.4	66.0	28.4	67.8
27.5	35.1	42.9	34.4	49.5	33.7	54.2	33.1	57.9	32.2	60.9	31.3	63.3	26.8	65.3
30.0	31.5	36.7	30.9	44.7	30.2	50.3	29.6	54.5	28.8	57.8	28.2	60.6	25.2	62.9
32.5	28.6	29.4	27.9	39.4	27.3	46.0	26.6	50.9	25.8	54.7	25.3	57.8	23.6	60.3
35.0	26.1	19.9	25.4	33.5	24.8	41.5	24.1	47.1	23.3	51.4	22.8	54.9	22.1	57.7
37.5			23.3	26.5	22.6	36.5	22.0	43.1	21.2	48.0	20.7	51.9	20.0	55.0
40.0			21.4	16.8	20.7	30.7	20.1	38.7	19.3	44.4	18.9	48.8	18.2	52.3
42.5					19.1	23.8	18.5	33.9	17.7	40.5	17.2	45.5	16.5	49.4
45.0							17.0	28.3	16.3	36.3	15.8	42.0	15.1	46.4
47.5							15.8	21.5	15.0	31.6	14.5	38.2	13.8	43.2
50.0									13.8	26.1	13.3	34.1	12.6	39.8
52.5									12.8	19.3	12.3	29.5	11.6	36.1
55.0											11.4	24.1	10.7	32.2
57.5											10.6	17.2	9.9	27.6
60.0													9.1	22.3
Maximum Radius	24.7	15.0	21.1	15.0	17.8	15.0	15.0	15.0	12.4	15.0	10.4	15.0	8.4	15.0
	35.9		40.4		44.8		49.2		53.7		58.1		62.6	

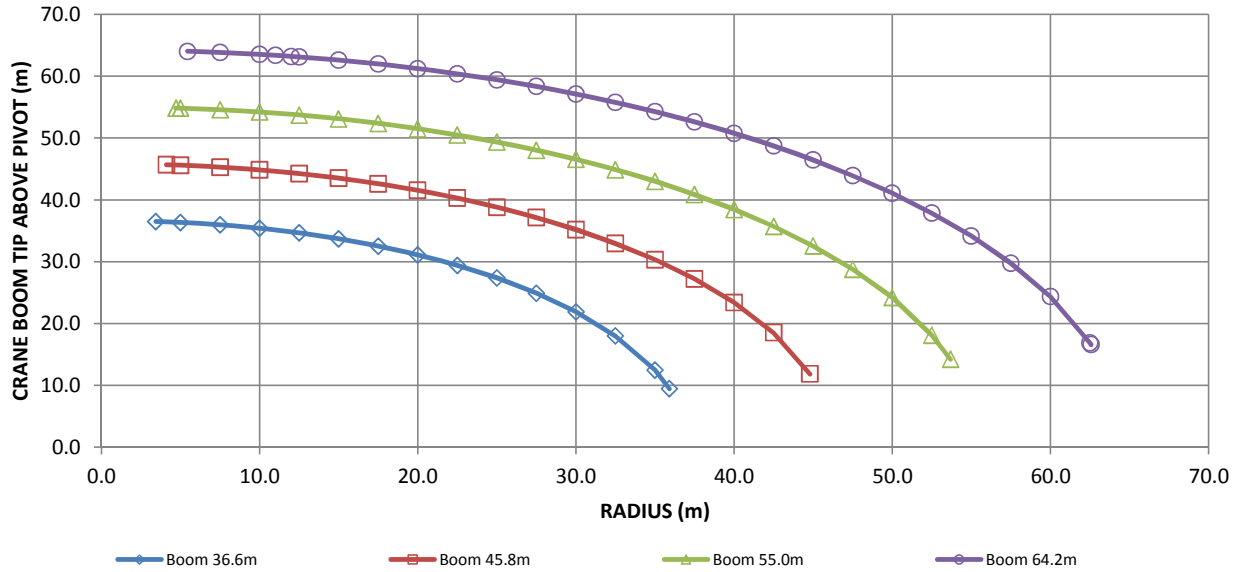
Dimension in unit of meter. Rated load in unit of tonne. Angle in unit of degree.

## SAFE WORKING LOAD - HOIST WINCH 25 TONNE x 1-FALL

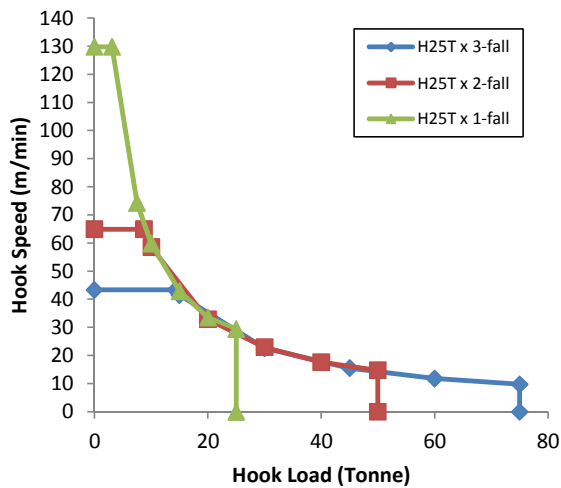
Boom Length	36.6		41.2		45.8		50.4		55.0		59.6		64.2	
Minimum Radius	3.3		3.6		3.9		4.2		4.6		4.9		5.2	
Radius	SWL	Angle	SWL	Angle	SWL	Angle	SWL	Angle	SWL	Angle	SWL	Angle	SWL	Angle
7.5	25.0	79.3	25.0	80.5	25.0	81.5	25.0	82.3	25.0	82.9	25.0	83.5	25.0	83.9
10.0	25.0	75.3	25.0	77.0	25.0	78.3	25.0	79.4	25.0	80.3	25.0	83.5	25.0	81.7
12.5	25.0	71.2	25.0	73.4	25.0	75.1	25.0	76.5	25.0	77.6	25.0	81.0	25.0	79.4
15.0	25.0	67.0	25.0	69.7	25.0	71.8	25.0	73.5	25.0	74.9	25.0	78.6	25.0	77.1
17.5	25.0	62.7	25.0	66.0	25.0	68.5	25.0	70.5	25.0	72.2	25.0	76.1	25.0	74.8
20.0	25.0	58.2	25.0	62.1	25.0	65.1	25.0	67.5	25.0	69.5	25.0	73.6	25.0	72.5
22.5	25.0	53.5	25.0	58.1	25.0	61.6	25.0	64.4	25.0	66.7	25.0	71.1	25.0	70.2
25.0	25.0	48.4	25.0	53.9	25.0	58.0	25.0	61.2	25.0	63.8	25.0	68.6	23.7	67.8
27.5	25.0	43.0	25.0	49.5	25.0	54.2	25.0	57.9	25.0	60.9	25.0	66.0	22.4	65.3
30.0	25.0	36.9	25.0	44.7	25.0	50.3	25.0	54.5	25.0	57.8	25.0	63.3	21.2	62.9
32.5	25.0	29.7	25.0	39.5	25.0	46.1	25.0	50.9	25.0	54.7	24.8	60.6	20.2	60.3
35.0	25.0	20.5	24.5	33.7	23.9	41.5	23.3	47.1	22.6	51.4	23.7	57.8	19.3	57.7
37.5			22.4	26.8	21.8	36.6	21.3	43.1	20.6	48.0	22.2	54.9	18.4	55.0
40.0			20.6	17.5	20.1	30.9	19.5	38.8	18.8	44.4	20.2	51.9	17.5	52.3
42.5					18.5	24.2	18.0	34.0	17.3	40.6	18.4	48.8	16.3	49.4
45.0							16.6	28.5	15.9	36.4	16.9	45.5	14.9	46.4
47.5							15.3	21.8	14.7	31.7	15.5	42.0	13.7	43.2
50.0									13.6	26.4	14.2	38.3	12.6	39.9
52.5									12.6	19.7	13.1	34.2	11.6	36.2
55.0											12.1	29.7	10.7	32.3
57.5											11.2	24.4	9.9	27.8
60.0													9.1	22.6
Maximum Radius	24.1	15.0	20.3	15.0	17.1	15.0	14.5	15.0	12.1	15.0	10.2	15.0	8.4	15.0
	36.1		40.5		45.0		49.4		53.8		58.3		62.7	

Dimension in unit of meter. Rated load in unit of tonne. Angle in unit of degree.

## CRANE REACH



## HOOK SPEED (200kW)

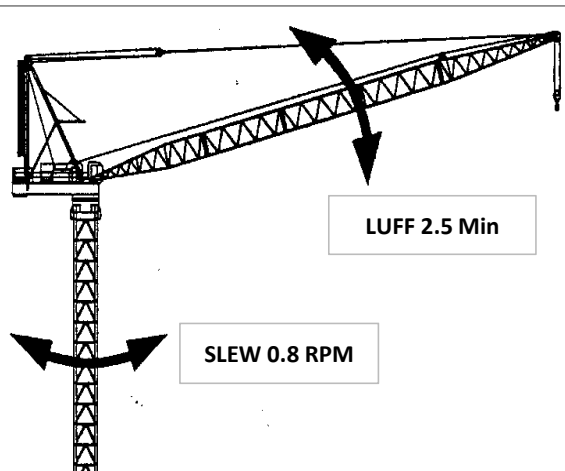


## COMPONENT WEIGHT & GEOMETRY

COMPONENT	WEIGHT	QTY	L	H	W
Front Deck	7.9	1	3.59	1.96	3.43
Rear Deck	8.7	1	6.63	1.45	3.34
Slew Mount	6.4	1	3.42	1.93	3.30
Cabin	1	1	1.80	2.47	1.65
Cabin Platform	0.5	1	4.08	0.50	1.75
Counterweight	7.6	5	2.39	0.20	2.00
Powerpack + Winches	16.5	1	5.71	3.85	3.13
Slewing	2.9	1	3.12	3.12	0.23
Mast Assembly	6.6	1	13.25	3.50	2.86
Boom Extension 9.2m	1.7	*	9.32	2.62	2.42
Boom Top 13.7m	3.0	1	14.32	3.70	2.42
Bridle	0.6	1	1.61	1.06	1.16
3-fall Hookblock	2.15	1	2.51	0.51	1.50
Tower 442	4.9	*	2.71	4.00	2.72
Tower 442R	5.9	*	2.71	4.00	2.72
Internal Ladder Climbing					
Climbing Tower + Cylinder	9.1	1	4.00	2.72	2.71
Climbing Foot	1.4	1	2.73	0.88	0.61
Climbing Ladder	0.5	*	*	0.20	0.17
External Climbing					
Monorail	1.84	1	7.43	1.27	0.60
Side Panel	4.97	2	11.52	0.37	2.74
Tie	0.9	2	7.02	0.17	3.41
Climbing Support	0.3	2	2.65	0.34	0.80
Access Platform	0.2	1	3.55	1.07	1.24

Geometry in meter. Weight in tonne.

Contact:



**Note:**

This datasheet is published for preliminary consideration and reference guide only. This datasheet should not be used for lifting purposes. Continuous improvements makes it necessary that Favelle Favco reserve the right to make changes to specification and equipment without prior notice.