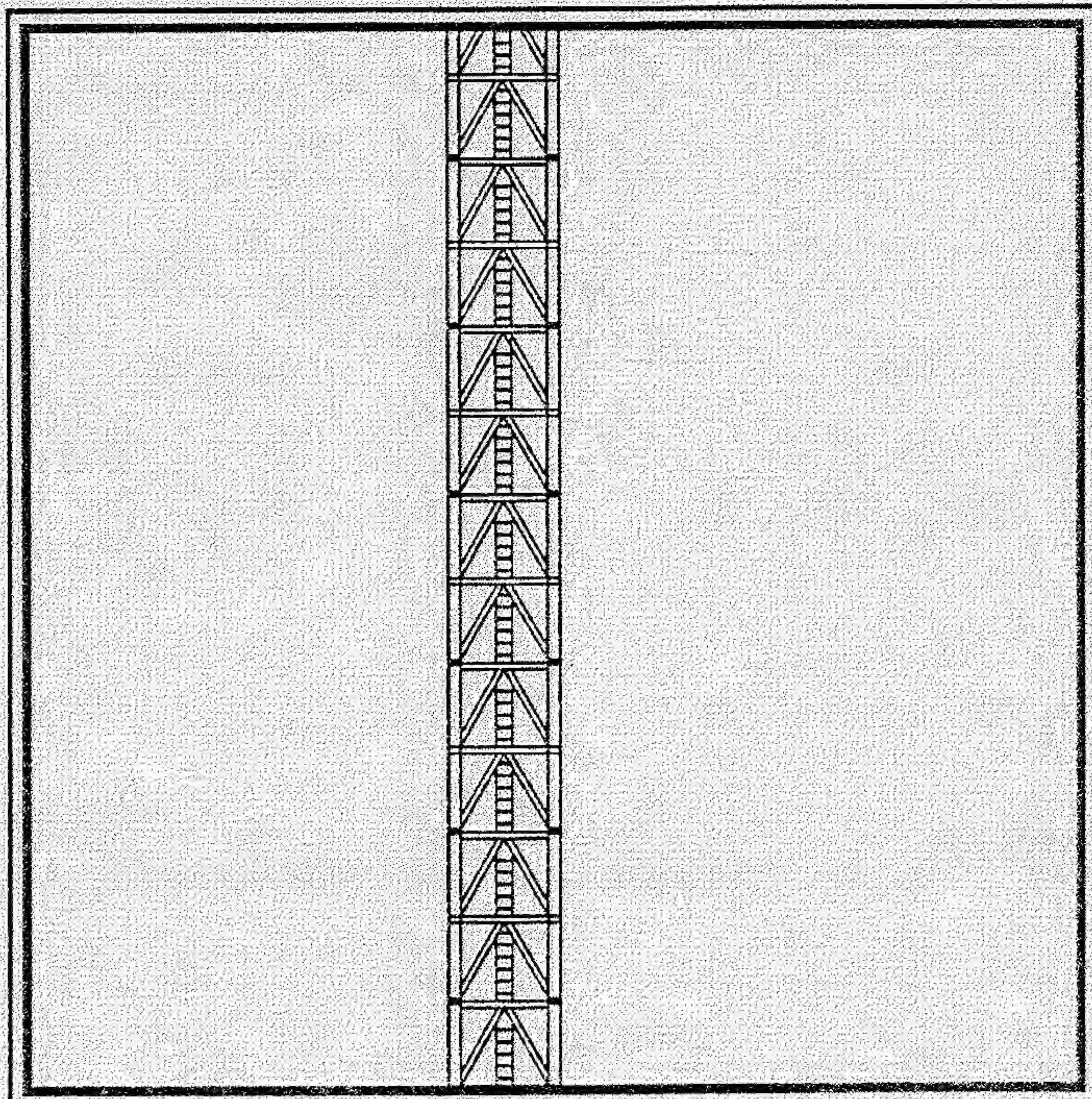


# M900D CONSTRUCTION TOWER CRANE

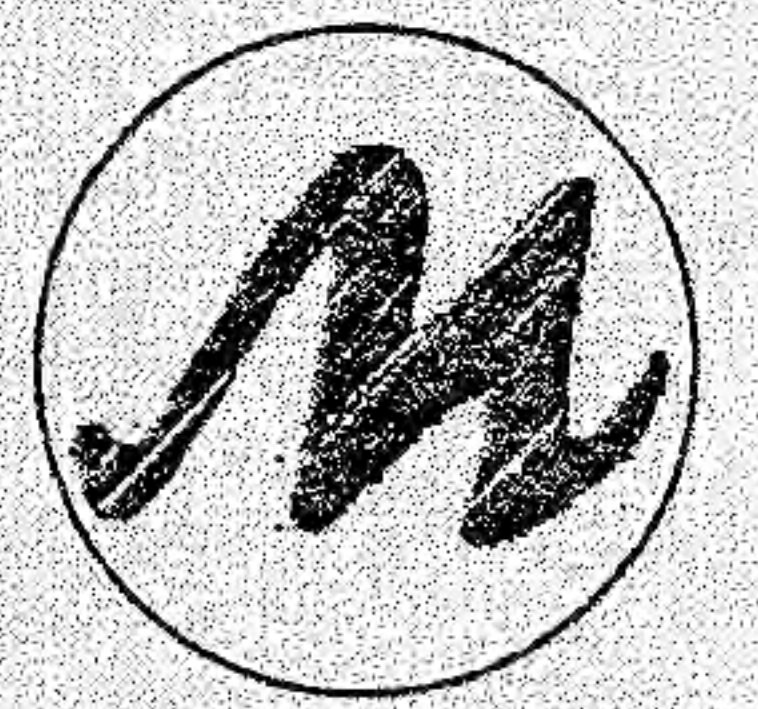


---

Technical Data Sheet

---

**FAVELLE  
FAVCO**



A subsidiary of Muhibbah Engineering (M) BHD

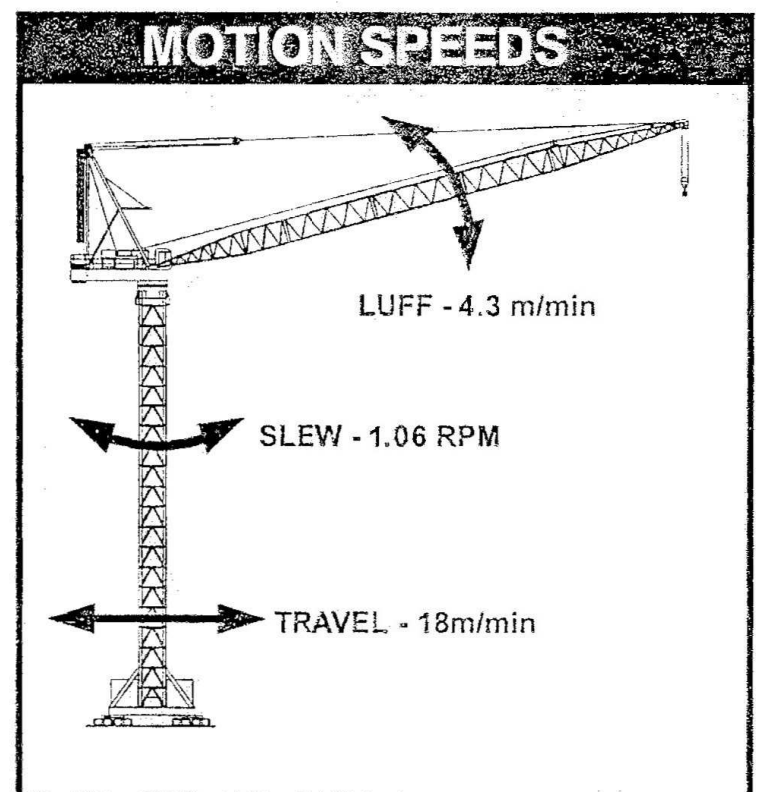
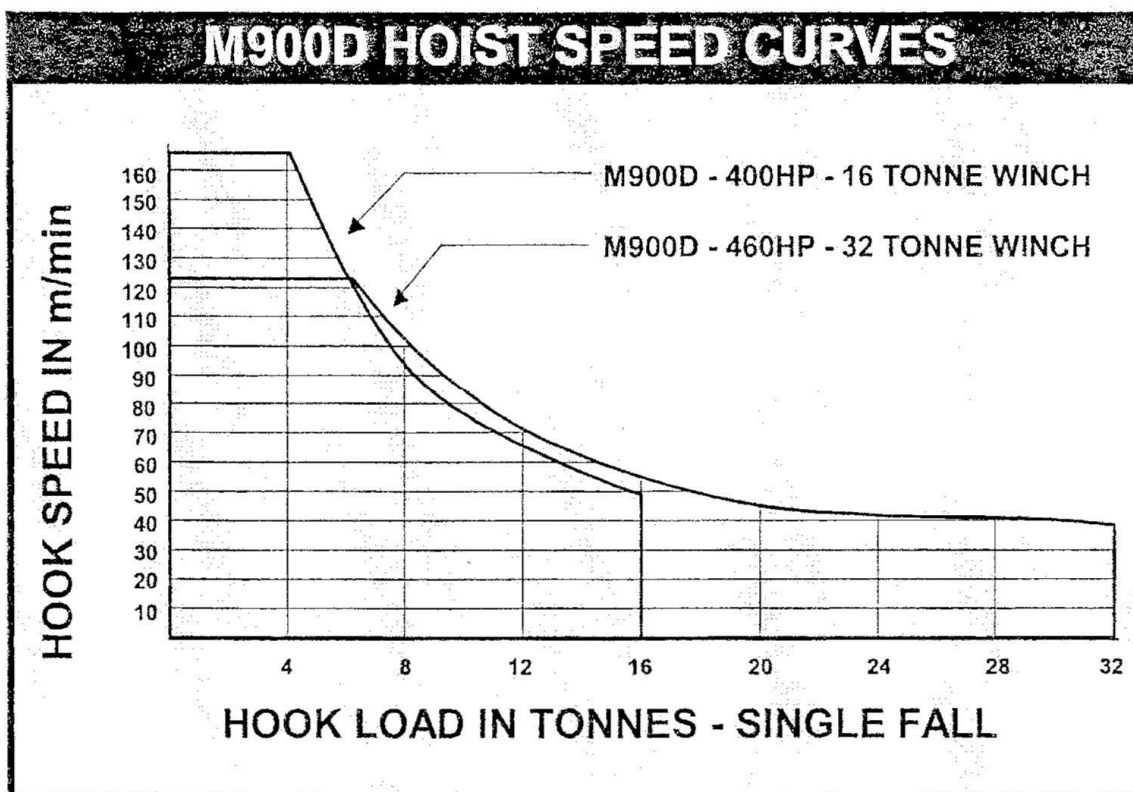
# Radius & Capacity

BOOM LENGTH (m)	MIN RADIUS (m)	MAX RADIUS FOR 64 TONNES (m)	RADIUS (METERS) & CAPACITY (TONNES) (32 TONNE WINCH & 2-FALLS)																
			10.0	15.0	20.0	25.0	30.0	32.5	35.0	37.5	40.0	42.5	45.0	47.5	50.0	52.5	55.0	57.5	60.0
			(m)	(m)	(m)	(m)	(m)	(m)	(m)	(m)	(m)	(m)	(m)	(m)	(m)	(m)	(m)	(m)	(m)
64.2	5.4	—	43.5	40.0	36.8	33.6	30.0	28.6	26.8	25.0	23.5	21.6	19.9	18.3	16.8	15.4	13.9	12.5	11.0
59.6	5.1	—	50.2	46.4	42.1	37.9	33.6	31.9	29.3	26.9	24.8	22.8	20.9	19.2	17.5	15.8	14.0		
55.0	4.8	5.6	58.5	53.0	47.0	41.2	36.1	33.4	30.5	28.0	25.8	23.6	21.5	19.4	17.3	15.1			
50.4	4.5	11.0	64.0	58.3	51.4	44.7	37.3	33.9	31.0	28.5	26.1	23.6	21.1	18.4					
45.8	4.1	19.1	64.0	64.0	59.9	46.6	37.7	34.3	31.4	28.7	25.5	22.3							
41.2	3.8	19.2	64.0	64.0	60.3	47.0	38.2	33.8	30.3	26.2	22.8								
36.6	3.5	19.2	64.0	64.0	60.9	47.6	37.9	33.7	28.3										

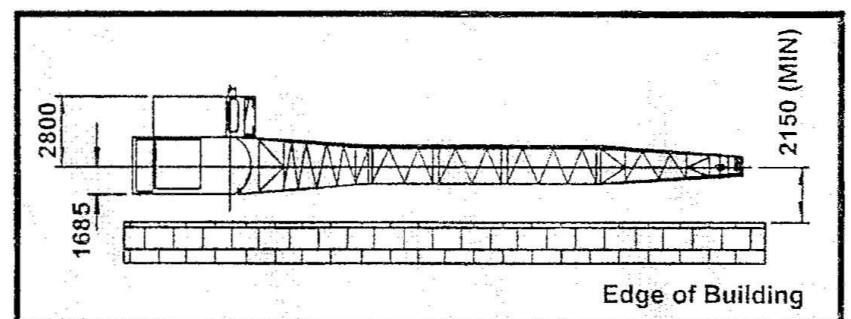
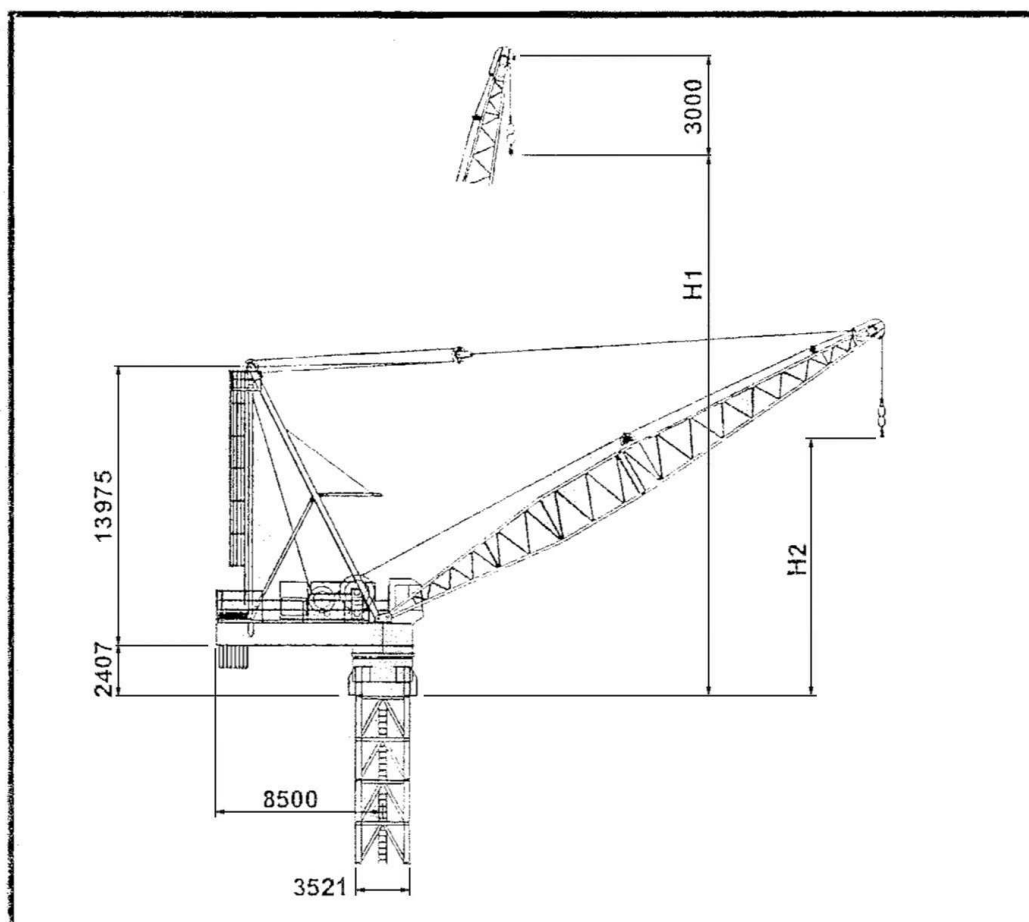
\*(For longer boom length, please consult manufacturer)

# Speeds

(Alternative Speed Configurations Available on Request)

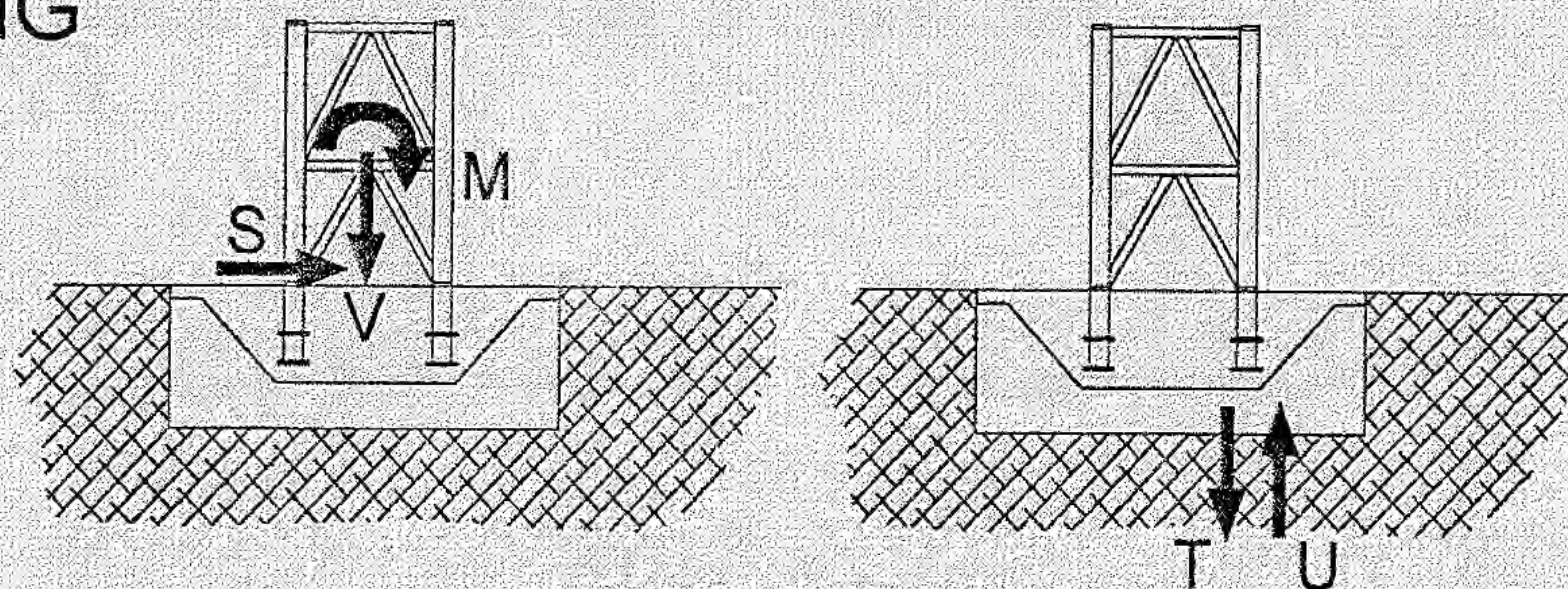
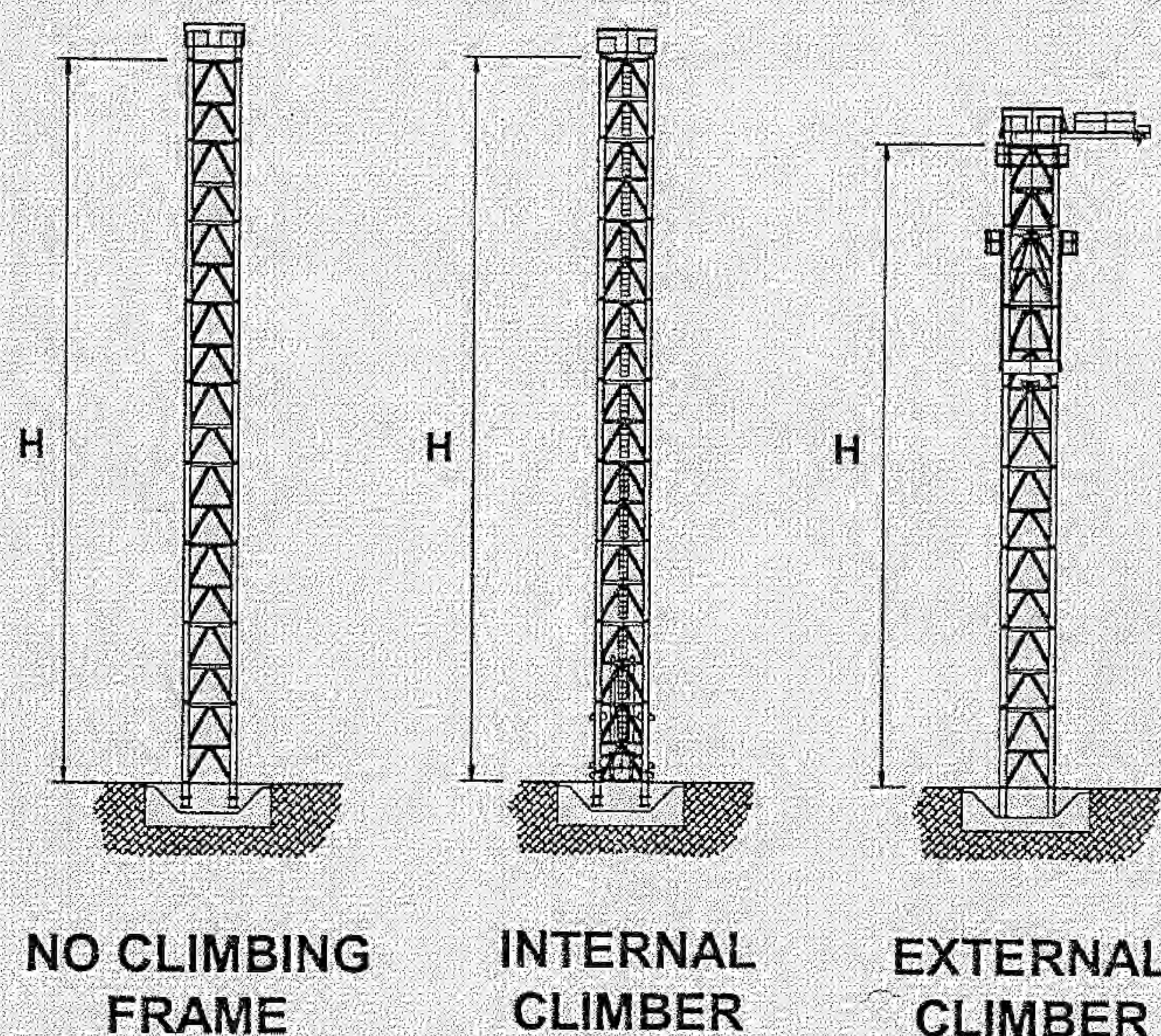


# Dimensions



MAX. RADIUS	BOOM LENGTH	HOOK HEIGHT H1	HOOK HEIGHT H2
70.0	73.4	73.2	22.1
65.0	68.8	68.6	22.5
60.0	64.2	64.0	22.8
55.0	59.6	59.5	23.0
52.5	55.0	54.9	16.4
47.5	50.4	50.3	16.8
42.5	45.8	45.7	17.1
40.0	41.2	41.1	9.9
35.0	36.6	36.5	10.7

### CRANE ON BASE - FREE STANDING



MAXIMUM VALUES AT ONE CORNER

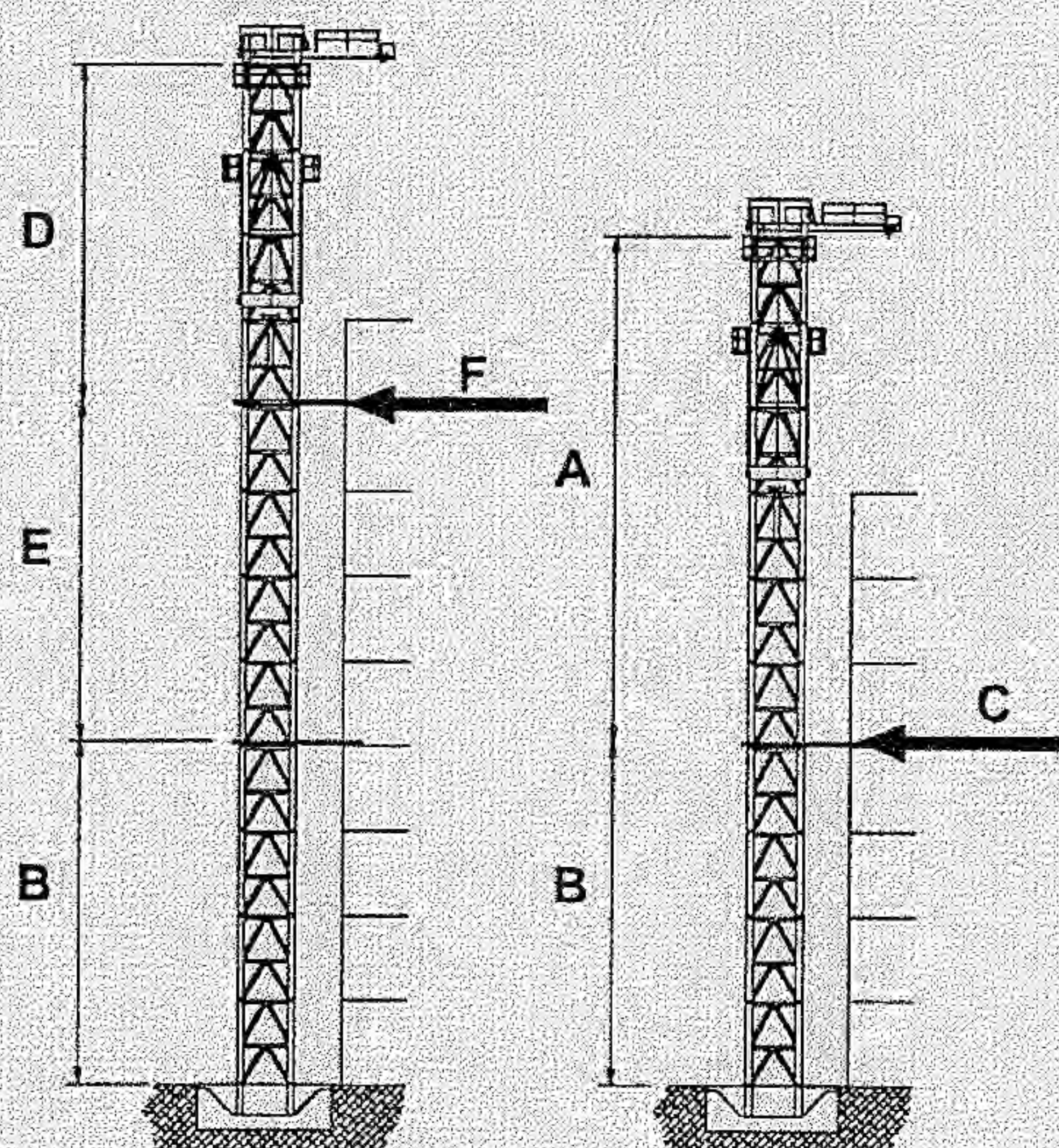
#### FREESTANDING TOWER HEIGHTS AND FOUNDATION REACTIONS

	NO CLIMBING FRAME			INTERNAL CLIMBING FRAME			EXTERNAL CLIMBING FRAME			UNITS
	762	763	1052	762	763	1052	762	763	1052	
TOWER	762	763	1052	762	763	1052	762	763	1052	
H	32	44	64	32	44	64	32	40	40	(m)
M	1214	1324	1462	1214	1324	1462	1244	1322	1577	(mT)
V	227	245	270	242	260	285	242	255	280	(T)
S	25	30	40	25	30	40	30	33	43	(T)
T	375	408	387	378	412	391	386	410	407	(T)
U	261	285	267	258	282	263	265	282	289	(T)

Tower heights applicable for in-service wind speeds up to 20 m/s & out-of-service wind speeds up to 42 m/s.

Tower heights based on 55.0m Boom Length. Alternatives available on request.

### EXTERNAL CLIMBING

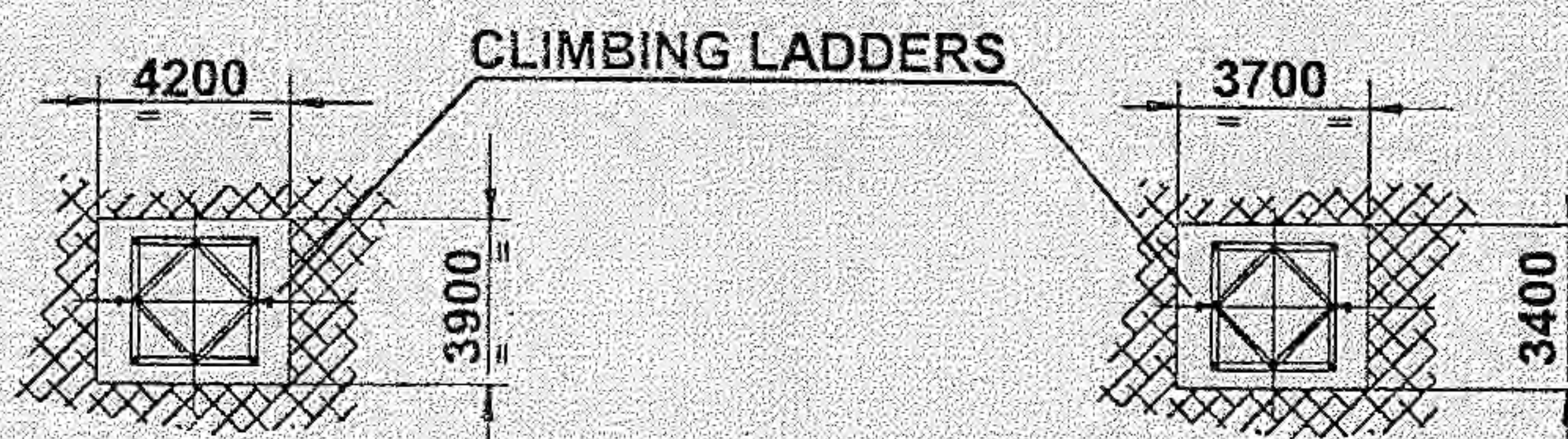
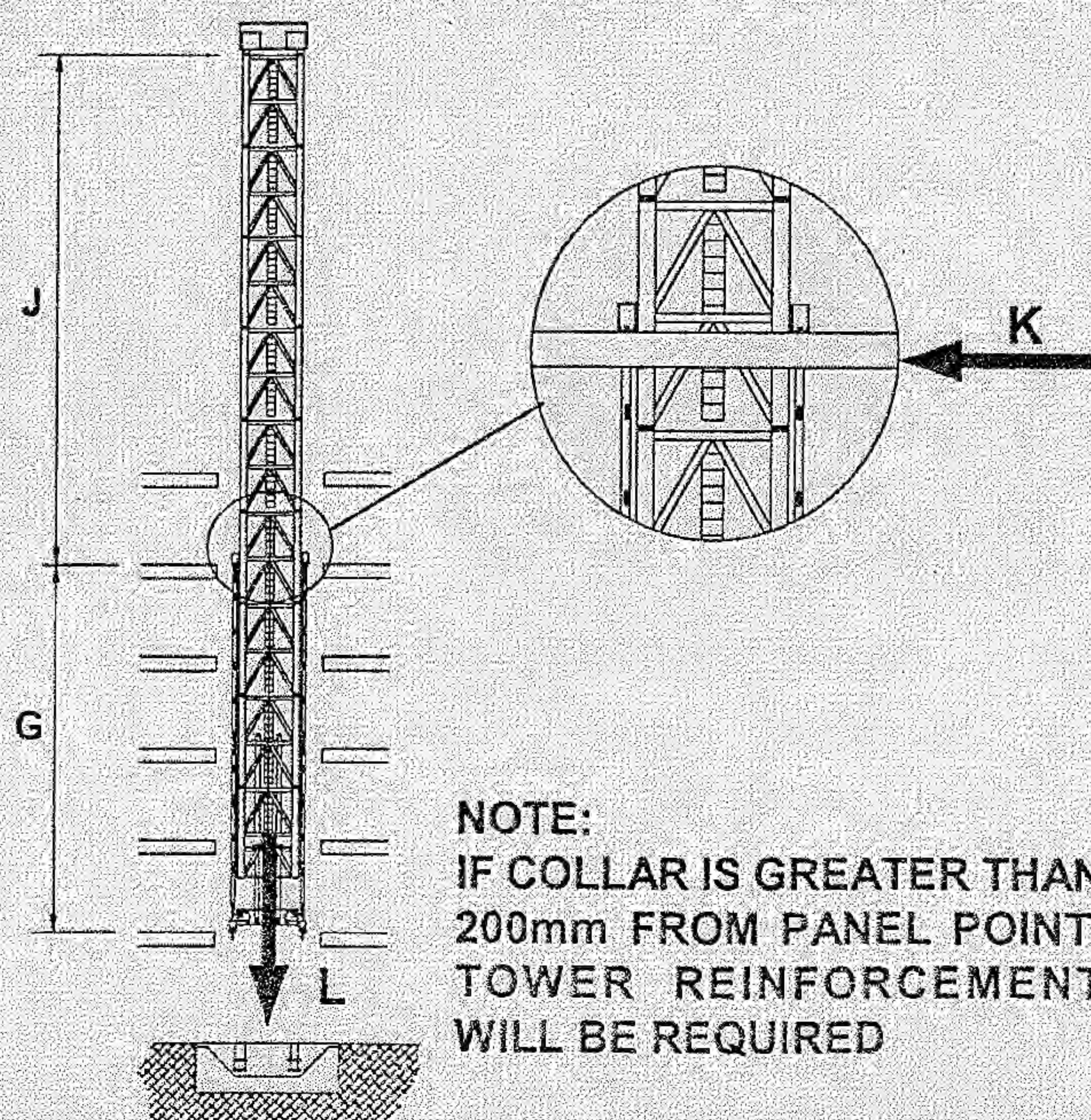


MORE THAN ONE TIE ABOVE BASE      ONE TIE ABOVE BASE

#### EXTERNAL CLIMBING

TOWER TYPES :		762	763	1052	UNITS
ONLY ONE TIE ABOVE BASE					
A	MAX. HEIGHT ABOVE FIRST TIE	28	36	56	(m)
B	MIN. HEIGHT TO FIRST TIE (WITH A)	20	24	24	(m)
C	MAX. HORIZONTAL TIE LOAD	99	89	129	(T)
MORE THAN ONE TIE ABOVE BASE					
D	MAX. HEIGHT ABOVE TOP TIE	28	36	56	(m)
E	MIN. HEIGHT BETWEEN TOP TIES (WITH D)	20	20	24	(m)
F	MAX. HORIZONTAL TIE LOAD (WITH D & E)	84	90	116	(T)

### INTERNAL LADDER CLIMBING

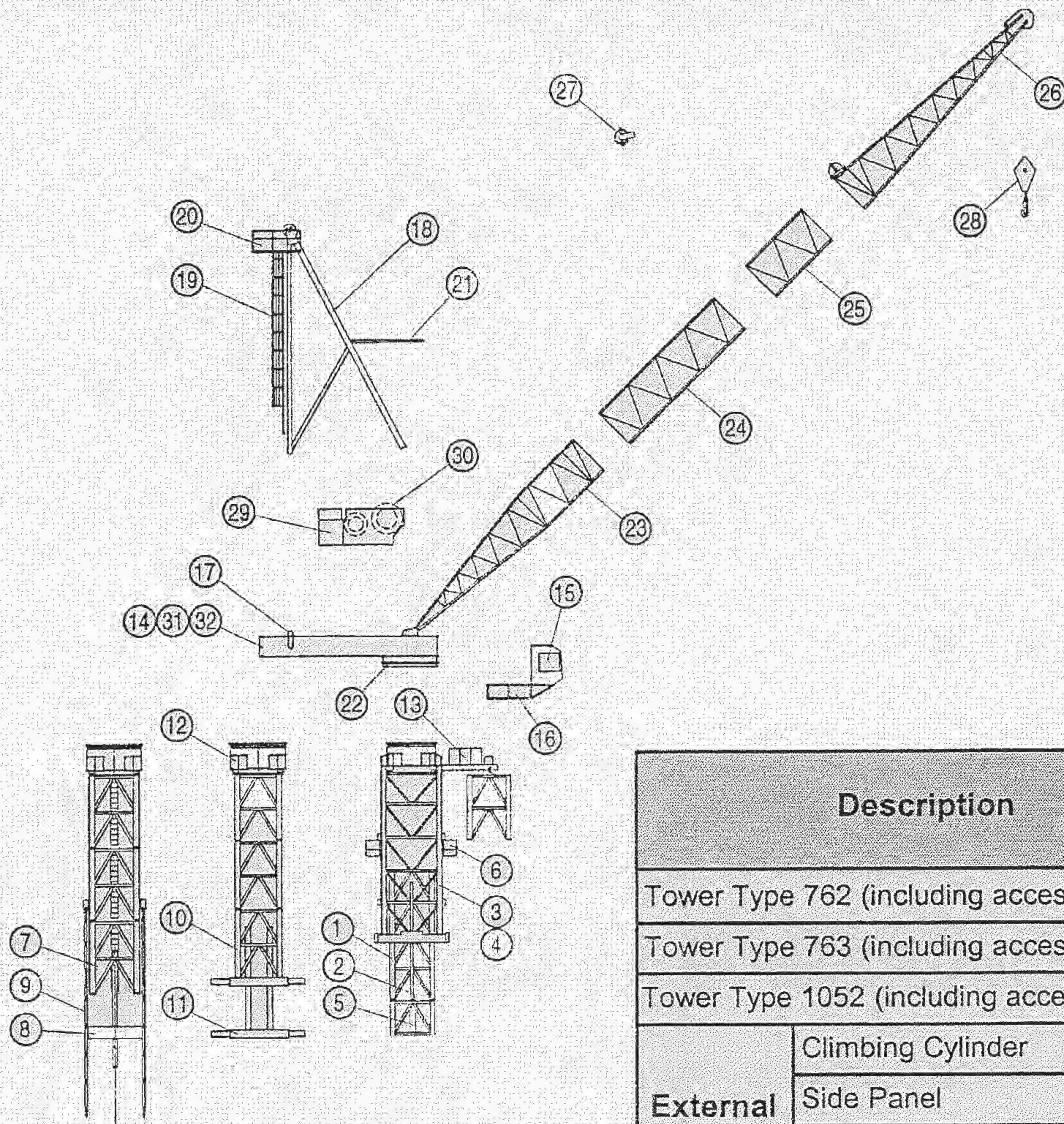


TYPE 1052 CLIMBING DETAILS

TYPE 762/763 CLIMBING DETAILS

#### INTERNAL LADDER CLIMBING

TOWER TYPES :		762	763	1052	UNITS
G	MINIMUM HEIGHT BETWEEN COLLARS	12	16	12	(m)
J	MAX. HGT. ABOVE TOP TIE (WITH G)	20	28	52	(m)
K	MAX. HORIZONTAL LOAD (WITH G + J)	99	80	120	(T)
L	TOTAL VERTICAL LOAD (WITH H)	242	260	285	(T)
H	MAX. FREESTANDING HEIGHT	32	44	64	(m)



INTERNAL CLIMBING (LADDER)    INTERNAL CLIMBING (3-BEAM)    EXTERNAL CLIMBING



**FAVELLE FAVCO CRANES (M) SDN BHD**

Lot 9895, 4th Mile, Jalan Kg. Jawa  
41000 Klang,  
Selangor Darul Ehsan  
Malaysia  
Tel: 603 333 7835, 603 333 7836  
Fax: 603 333 7842

**FAVELLE FAVCO CRANES PTE LTD**

No. 6 Sungei Kadut Loop  
Singapore 729 453  
Tel: 65 366 3508  
Fax: 65 366 3503

**FAVELLE FAVCO CRANES PTY LTD**

28 Yarrunga Street Prestons  
NSW 2170 Australia  
P.O. Box 456 Liverpool BC  
NSW 1871 Australia  
Telephone: 61 2 9607 0055, 61 2 9608 2000  
Fax: 61 2 9607 0022, 61 2 9607 2728  
E-MAIL: favcosyd@enternet.com.au

Description		Item	Qty.	L Length (m)	B Width (m)	H Height (m)	Weight per item (kg)
Tower Type 762 (including access ladders)		1a	-	4.000	3.021	3.009	4600
Tower Type 763 (including access ladders)		1b	-	4.000	3.027	3.011	5000
Tower Type 1052 (including access ladders)		1c	-	4.000	3.521	3.509	5400
External Climbing	Climbing Cylinder	2	2	4.500	0.330	0.330	2400
	Side Panel	3	2	11.520	0.390	3.140	5780
	Tie	4	2	7.020	0.207	3.140	980
	Climbing Support	5	2	2.650	0.335	0.800	400
	Access Platform	6	1	3.650	1.073	1.235	200
Internal Ladder Climbing	Bottom Climbing Tower (including Cylinders)	7	1	4.000	3.007	3.015	9921
	Climbing Foot	8	1	3.060	0.440	0.950	2390
	Climbing Ladder	9	As Req.	0.210	0.170	7.985	525
3 - Beam Climber	Bottom Climbing Tower	10	1	4.575	3.007	3.015	9000
	Climbing Beams	11	1	0.450	3.007	0.802	1800
Slew Mount		12	1	3.716	3.310	1.868	5729
Monorail Beam & Trolley (external climbing)		13	1	7.530	1.680	1.400	1600
Machinery Deck (unsplit)		14	1	10.505	3.420	2.082	16028
Cabin		15	1	1.700	1.100	2.100	1200
Cabin Support		16	1	3.790	1.440	1.500	234
Counterweights		17	10	3.060	0.225	1.800	8556
Mast & Sheaves		18	1	14.400	0.800	3.220	9352
Mast Ladder		19	1	13.220	0.975	0.800	289
Mast Platform		20	1	2.475	1.450	0.940	202
Boom Buffer		21	1	3.590	0.220	2.810	290
Slew Ring		22	1	3.100	3.100	0.175	1950
Bottom Boom Section		23	1	13.700	3.070	2.815	2888
Boom Extension Section		24	1	9.200	2.815	2.815	1991
Boom Extension Section		25	1	4.600	2.815	2.815	1092
Top Boom Section		26	1	13.700	2.815	2.815	3513
Bridle		27	1	1.670	0.750	1.170	785
2 - Fall Hook Block		28	1	0.950	0.332	2.410	1163
Powerpack & Winches		29	1	5.650	2.950	2.250	14848
Hoist Rope		30	1	600.000	-	-	4612
Split Deck - Front		31	1	-	-	-	-
Split Deck - Back		32	1	-	-	-	-

**Distributed By:**