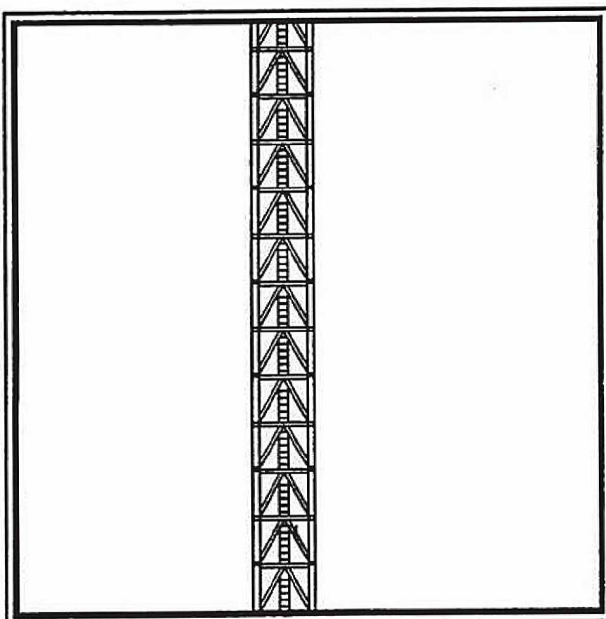


# M760D CONSTRUCTION TOWER CRANE



---

**Technical Data Sheet**

---

**FAELLE  
FAVCO**



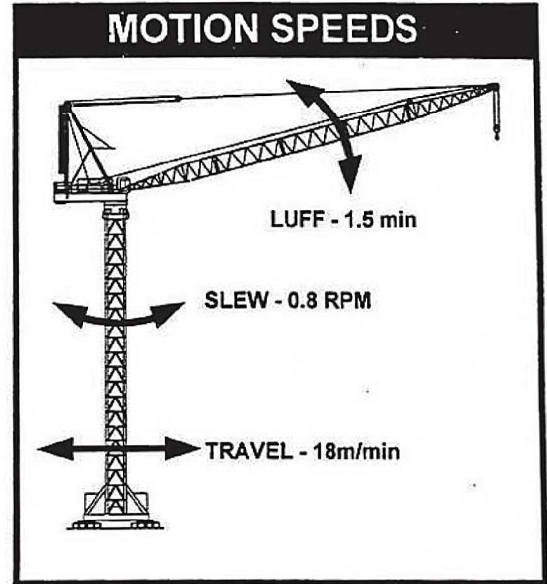
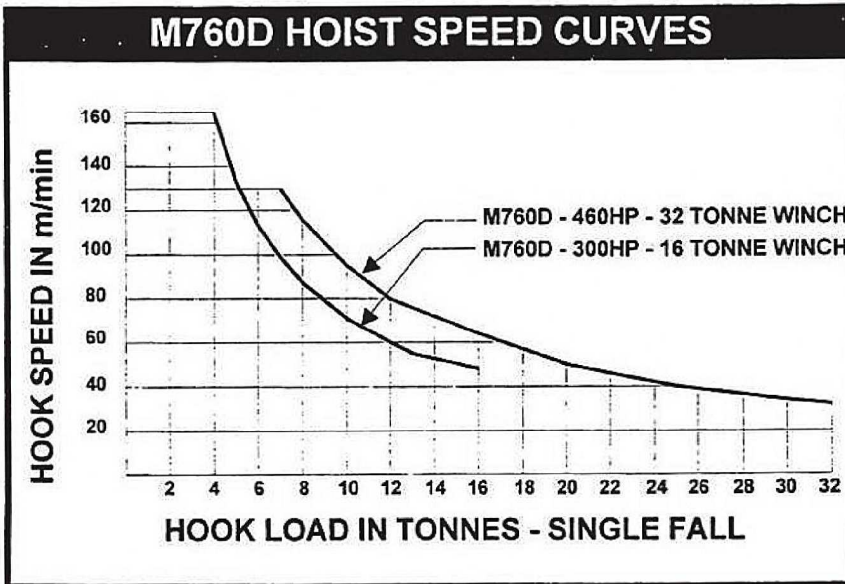
A subsidiary of Muhibbah Engineering (M) BHD

# Radius & Capacity

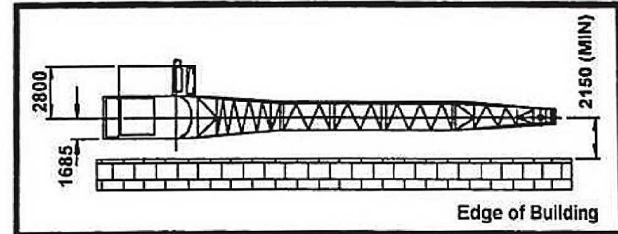
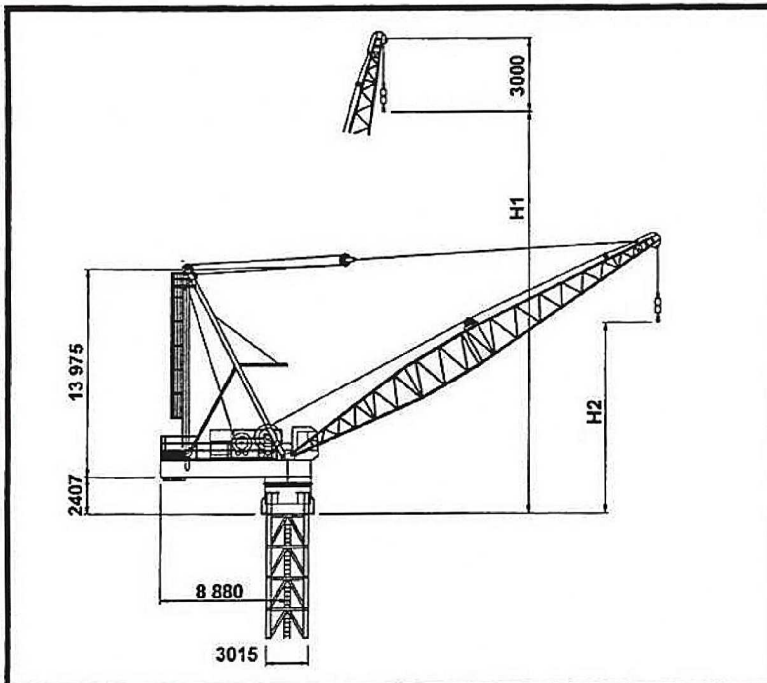
MAX. RADIUS (m)	MIN. RADIUS (m)	MAX. RADIUS 64 Tonne (m)	RADIUS & CAPACITY (TONNE) (32 TONNE & 25 TONNE WINCHES & 2-FALL)																				
			10.0 (m)	15.0 (m)	20.0 (m)	25.0 (m)	30.0 (m)	32.5 (m)	35.0 (m)	37.5 (m)	40.0 (m)	42.5 (m)	45.0 (m)	47.5 (m)	50.0 (m)	52.5 (m)	55.0 (m)	57.5 (m)	60.0 (m)	62.5 (m)	65.0 (m)	67.5 (m)	70.0 (m)
70.0	6.5	-	29.5	25.8	23.0	20.5	18.1	16.9	15.7	14.6	13.5	12.5	11.4	10.4	9.6	8.7	7.9	7.2	6.5	5.9	5.3	4.9	4.4
65.0	6.3	-	32.0	28.4	25.0	22.0	19.2	17.9	16.6	15.3	14.1	12.9	11.7	10.7	9.8	9.1	8.1	7.4	6.9	6.3	5.8		
60.0	5.8	-	32.0	32.0	30.5	25.3	21.1	19.4	17.7	16.3	15.0	13.8	12.7	11.8	10.9	10.1	9.3	8.6	7.8				
55.0	5.5	-	32.0	32.0	32.0	30.3	23.7	21.6	19.7	18.0	16.6	15.3	14.1	13.0	11.9	10.9	10.1						
52.5	4.4	7.0	58.0	52.0	43.5	33.5	27.0	24.5	22.0	20.2	18.5	17.1	15.7	14.6	13.5	12.6							
47.5	4.3	11.0	64.0	59.5	43.7	34.0	27.3	24.9	22.5	20.7	19.0	17.6	16.2	15.0									
42.5	4.0	14.1	64.0	60.0	43.8	34.8	27.7	25.4	23.0	21.1	19.3	18.0											
40.0	3.7	14.2	64.0	60.2	44.0	35.0	28.2	25.8	23.5	21.6	19.7												
35.0	3.3	14.5	64.0	60.5	44.5	35.2	28.5	26.1	23.7														

# Speeds

(Alternative Speed Configurations Available on Request)

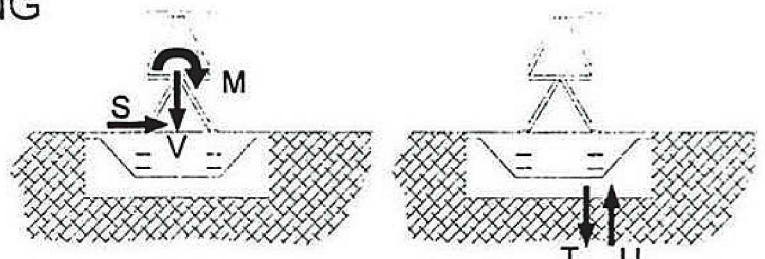
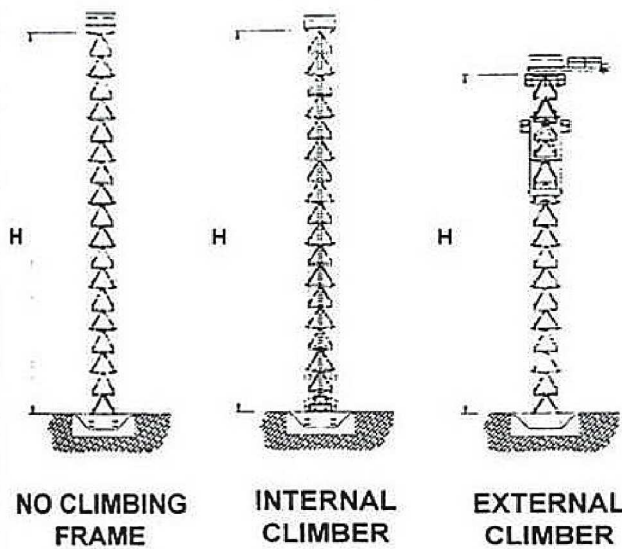


# Dimensions



MAXIMUM RADIUS (m)	BOOM LENGTH (m)	HOOK HEIGHT	
		H1 (m)	H2 (m)
70.0 m	73.4 m	73.6 m	24.4 m
65.0 m	68.8 m	69.3 m	24.7 m
60.0 m	64.2 m	64.4 m	24.9 m
55.0 m	59.6 m	59.9 m	24.9 m
52.5 m	55.0 m	55.3 m	18.7 m
47.5 m	50.4 m	50.7 m	19.0 m
42.5 m	45.8 m	46.1 m	19.0 m
40.0 m	41.2 m	41.5 m	12.4 m
35.0 m	36.6 m	37.0 m	13.0 m
30.0 m	32.0 m	32.4 m	13.2 m

# CRANE ON BASE - FREE STANDING



MAXIMUM VALUES  
AT ONE CORNER

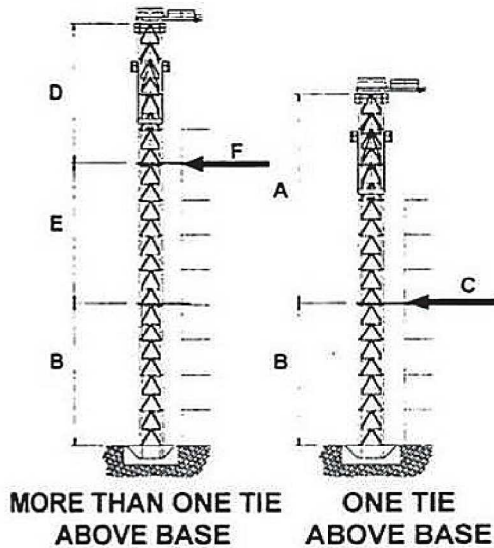
## FREESTANDING TOWER HEIGHTS AND FOUNDATION REACTIONS

TOWER	NO CLIMBING FRAME			INTERNAL CLIMBING FRAME			EXTERNAL CLIMBING FRAME			UNITS
	761	762	442	761	762	442	761	762	442	
H	40	48	40	40	48	40	40	40	36	(m)
M	1215	1478	1201	1215	1478	1201	1386	1384	1234	(mT)
V	186	198	187	201	213	202	201	204	198	(T)
S	29	32	28	29	32	28	34	34	31	(T)
T	361	433	397	365	437	401	410	410	410	(T)
U	275	341	310	271	337	306	316	315	317	(T)

Tower heights applicable for in-service wind speeds up to 20 m/s & out-of-service wind speeds up to 42 m/s

Alternatives available upon request

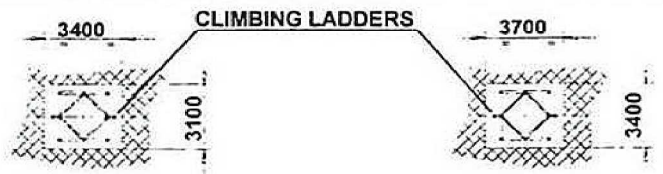
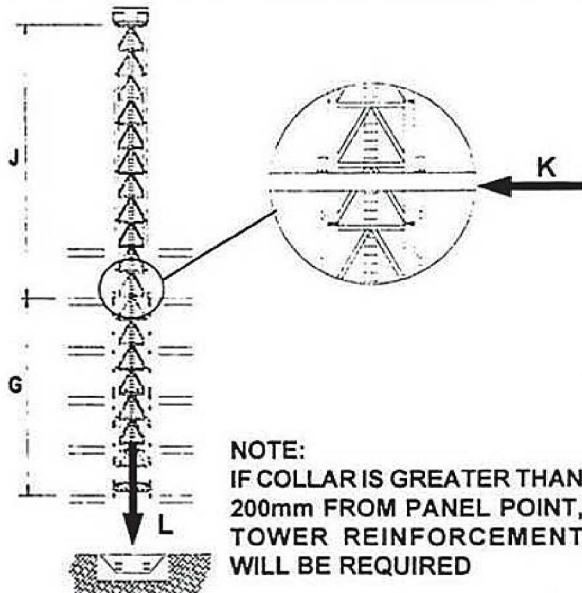
## EXTERNAL CLIMBING



### EXTERNAL CLIMBING

TOWER TYPES:		761	762	442	UNITS
ONE TIE ABOVE BASE					
A	MAX. HEIGHT ABOVE FIRST TIE	36	40	36	(m)
B	MIN HEIGHT TO FIRST TIE	24	28	24	(m)
C	MAX. HORIZONTAL TIE LOAD	111	109	110	(T)
MORE THAN ONE TIE BASE					
D	MAX. HEIGHT ABOVE TOP TIE	36	40	36	(m)
E	MIN HEIGHT BETWEEN TOP TIES	20	24	20	(m)
F	MAX. HORIZONTAL TIE LOAD	112	108	111	(T)

## INTERNAL LADDER CLIMBING

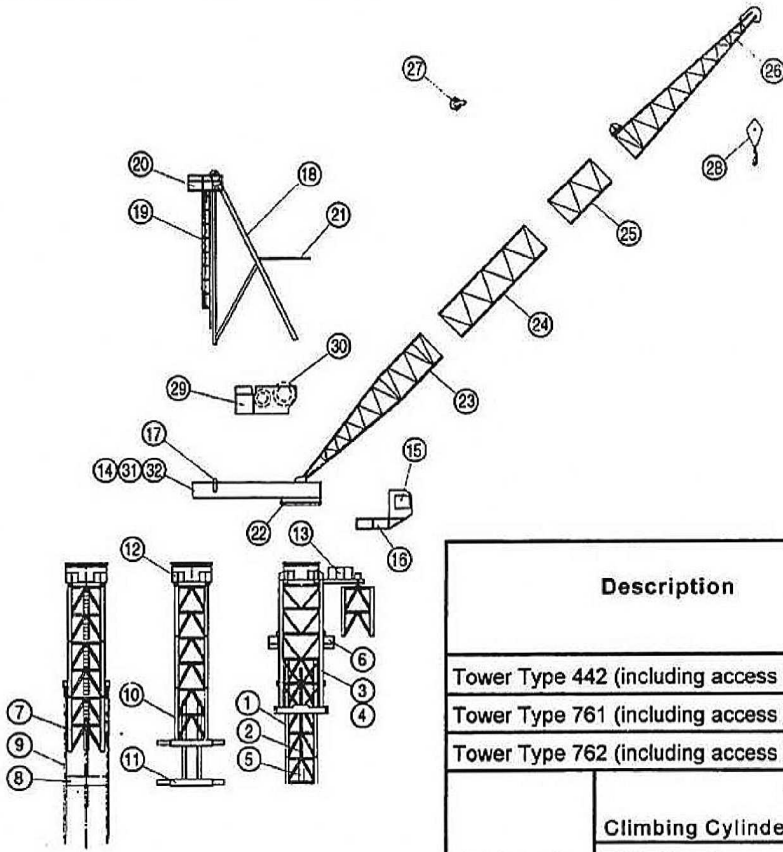


TYPE 442  
CLIMBING DETAILS

TYPE 761/762  
CLIMBING DETAILS

### INTERNAL LADDER CLIMBING

TOWER TYPES		761	762	442	UNITS
G	MIN. DISTANCE BETWEEN COLLARS	12	12	12	(m)
J	MAX. DISTANCE ABOVE TOP TIE	28	36	28	(m)
K	MAXIMUM HORIZONTAL LOAD	97	119	96	(T)
L	TOTAL VERTICAL LOAD	201	213	202	(T)
H	MAX. FREESTANDING HEIGHT	40	48	40	(m)



INTERNAL CLIMBING LADDER (7-11)    INTERNAL CLIMBING 3-BEAM (12-16)    EXTERNAL CLIMBING (17-22)

# FAVELLE FAVCO

## FAVELLE FAVCO CRANES (M) SDN BHD

Lot 9895, 4th Mile, Jalan Kg. Jawa  
41000 Klang,  
Selangor Darul Ehsan  
Malaysia  
Tel: 603 333 7835, 603 333 7836  
Fax: 603 333 7842

## FAVELLE FAVCO CRANES PTE LTD

No. 6 Sungei Kadut Loop  
Singapore 729 453  
Tel: 65 366 3508  
Fax: 65 366 3503

## FAVELLE FAVCO CRANES PTY LTD

28 Yarrunga Street Prestons  
NSW 2170 Australia  
P.O. Box 456 Liverpool BC  
NSW 1871 Australia  
Telephone: 61 2 9607 0055, 61 2 9608 2000  
Fax: 61 2 9607 0022, 61 2 9607 2728  
E - MAIL : favcosyd@enternet.com.au

Description		Pos	Qty	L Length (m)	W Width (m)	H Height (m)	Weight per item (kg)
Tower Type 442 (including access ladders)		1	-	4.000	3.009	3.021	4600
Tower Type 761 (including access ladders)		1	-	4.000	3.007	3.015	4300
Tower Type 762 (including access ladders)		1	-	4.000	2.709	2.721	4400
External Climber	Climbing Cylinder	2	2	4.500	0.330	0.330	2400
	Side Panel	3	2	11.520	0.390	3.140	5780
	Tie	4	2	7.020	0.207	3.140	980
	Climbing Support	5	2	2.650	0.335	0.800	400
	Access Platform	6	1	3.650	1.073	1.235	200
Internal Ladder Climber	Bottom Climbing Tower (inc Cylinders)	7	1	4.000	3.007	3.015	15582
	Climbing Foot	8	1	3.060	0.440	0.950	2390
	Climbing Ladder	9	?	0.210	0.170	7.985	525
3 - Beam Climber	Bottom Climbing Tower	10	1	4.575	3.007	3.015	9000
	Climbing Beams	11	1	0.450	3.007	0.802	1800
Slew Mount		12	1	3.720	3.370	1.868	5300
Monorail Beam & Trolley		13	1	7.530	1.680	1.400	1600
Machinery Deck		14	1	10.505	3.420	2.082	16028
Cabin		15	1	1.700	1.200	2.100	1200
Cabin Support		16	1	3.790	1.440	1.500	234
Counter-weights		17	7	3.060	0.225	1.800	7966
Mast & Sheaves		18	1	14.400	0.800	3.220	8352
Mast Ladder		19	1	13.220	0.975	0.800	289
Mast Platform		20	1	2.475	1.450	0.940	202
Boom Buffer		21	1	3.590	0.220	2.810	290
Slew Ring		22	1	3.100	3.100	0.175	1950
Bottom Jib Section		23	1	13.700	3.070	2.815	2888
Jib Extension Section		24	1	9.200	2.815	2.815	1991
Jib Extension Section		25	1	4.600	2.815	2.815	1092
Top Jib Section		26	1	13.700	3.815	2.815	3513
Bridle		27	1	1.670	0.750	1.170	785
2 - Fall Hook		28	1	0.950	0.332	2.410	1163
Powerpack Winches		29	1	5.650	2.950	2.250	14848
Hoist Rope		30	1	600.000	-	-	4612
Split Deck - Front		31	1	-	-	-	-
Split Deck - Back		32	1	-	-	-	-

Distributed By: