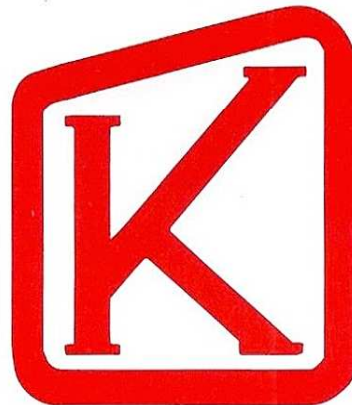
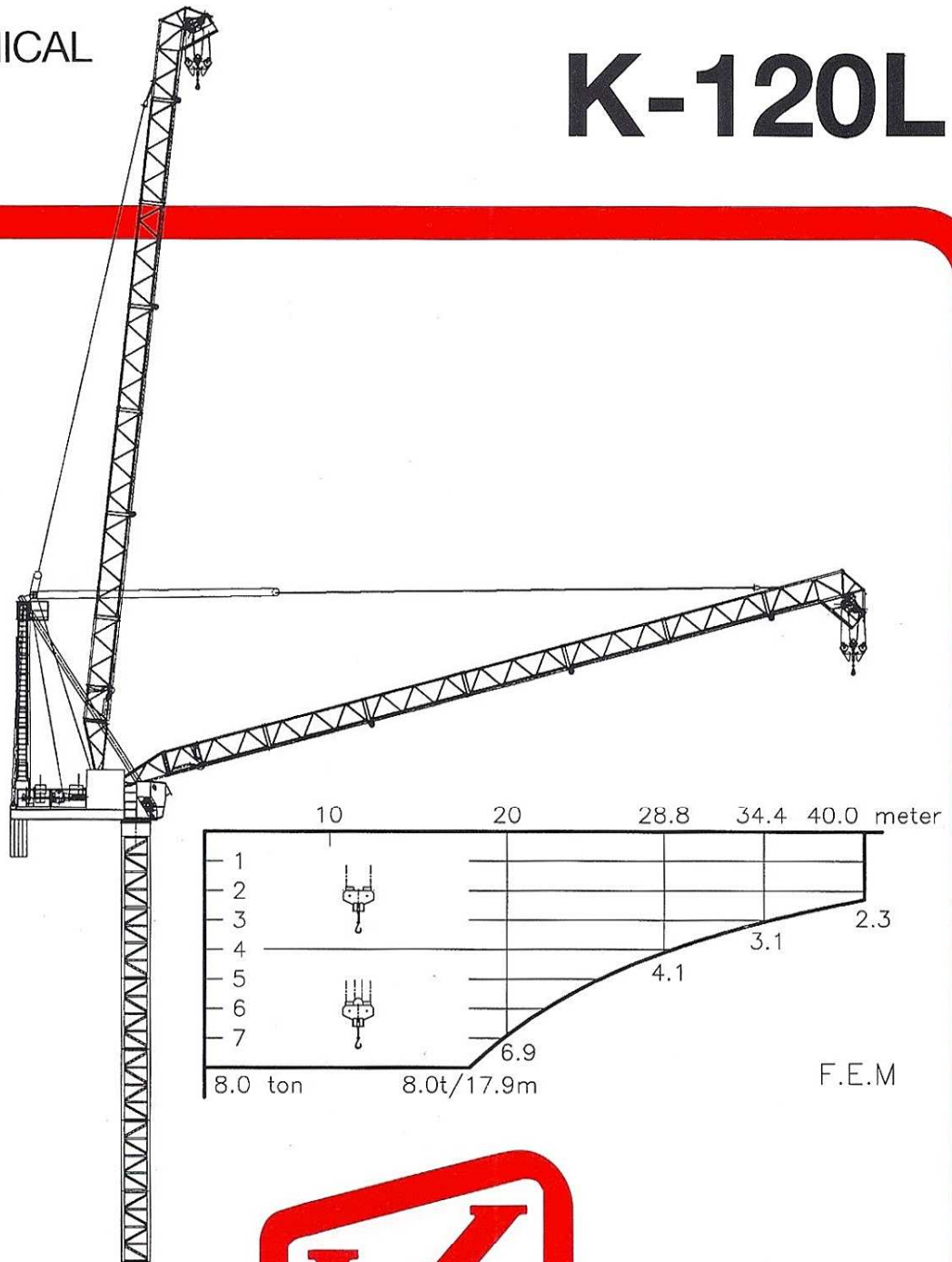


TECHNICAL
DATA

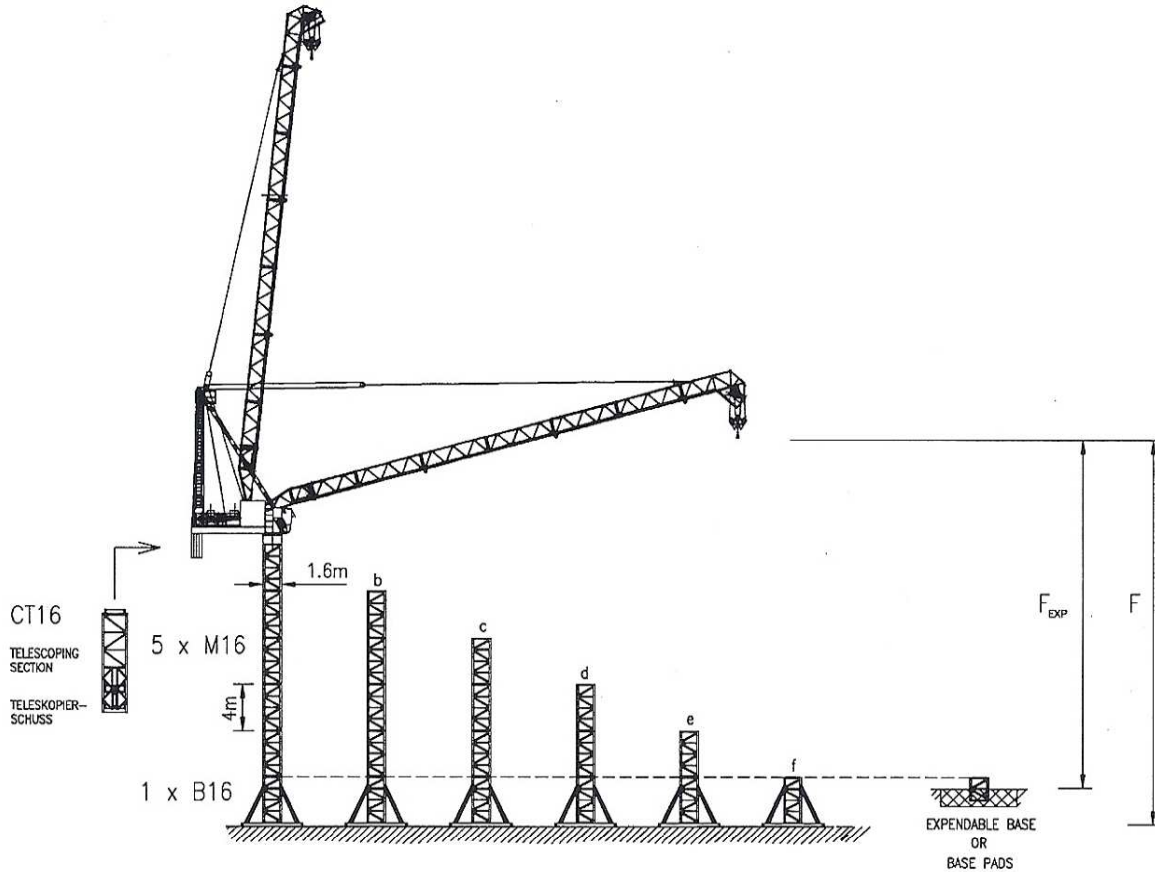
K-120L



KRØLL CRANES A/S

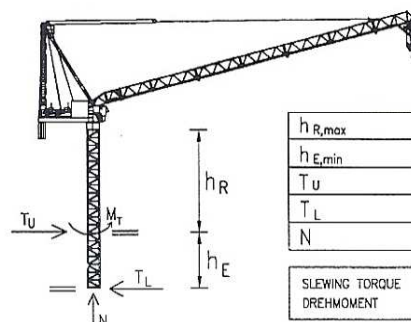
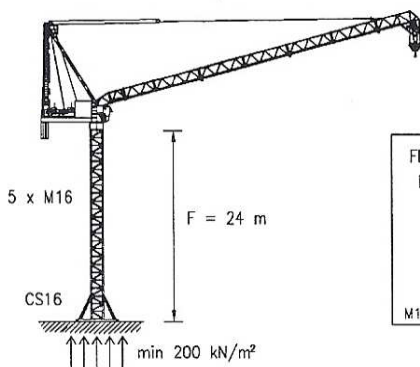
Nordkranvej 2 · DK-3540 Lyngby · Denmark · Phone: +45 42 18 74 00 · Fax: +45 42 18 88 07 · Telex: 42175 kroll dk

K-120L STATIONARY / STATIONÄR



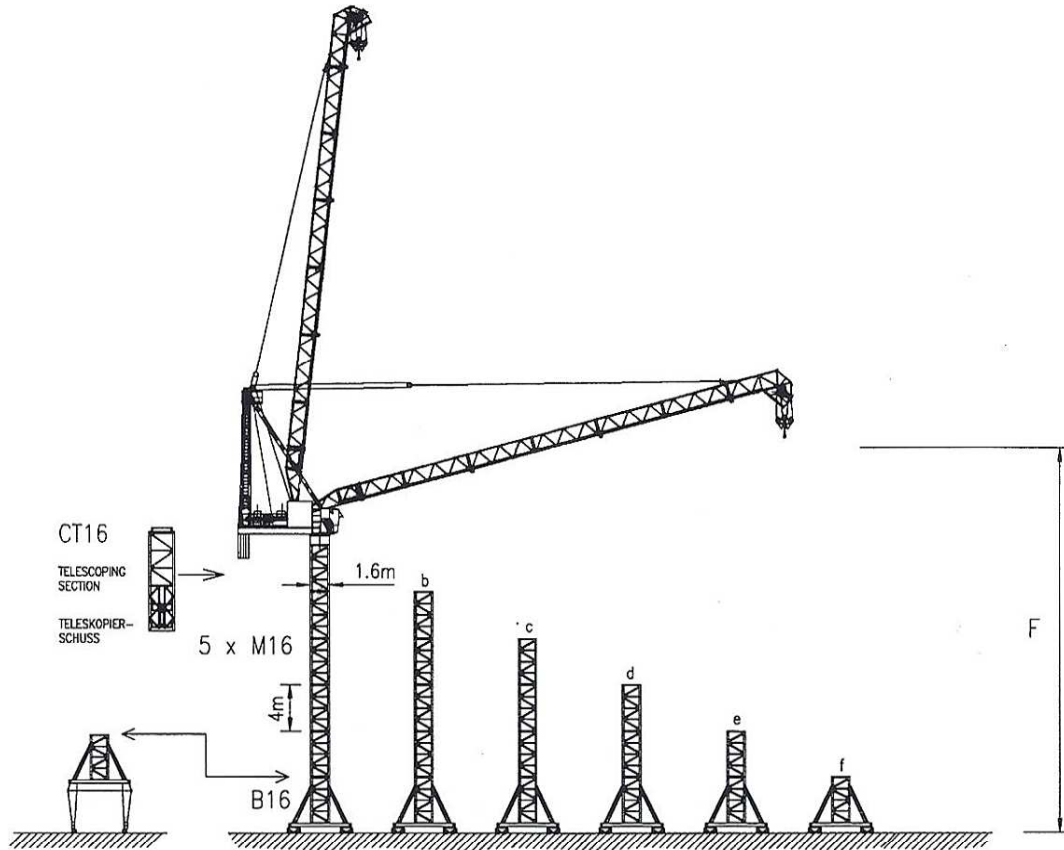
| HOOK HEIGHT / HAKENHÖHE | | F | m | a | b | c | d | e | f |
|---|----------------------------------|------------------|-----|-----|-----|-----|-----|-----|-----|
| CORNER PRESSURE ECKDRUCK 6m | BALLAST | t | 29 | 26 | 24 | 22 | 20 | 18 | |
| | IN SERVICE IM BETRIEB | kN | 520 | 480 | 450 | 420 | 400 | 390 | |
| | OUT OF SERVICE AUSSER BETRIEB | kN | 460 | 360 | 290 | 240 | 200 | 190 | |
| FOUNDATION WEIGHT FUNDAMENTSGEWICHT min 200 kN/m ² | B x B x H | F | m | 33 | 29 | 25 | 21 | 17 | 13 |
| | H=1.0m | B | m | 7.0 | 7.0 | 7.0 | 7.0 | 7.0 | 7.0 |
| | | ton | | 117 | 117 | 117 | 117 | 117 | 117 |
| FOUNDATION WEIGHT FUNDAMENTSGEWICHT min 200 kN/m ² | B x B x H | F _{EXP} | m | 30 | 26 | 22 | 18 | 14 | |
| | H=1.4m | B | m | 5.5 | 5.3 | 5.2 | 5.1 | 5.0 | |
| | | ton | | 102 | 94 | 91 | 87 | 84 | |

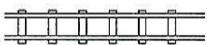
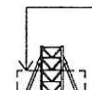
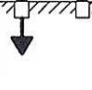
K-120L CLIMBER / KLETTERKRAN




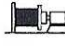
| | |
|------------------------------|---------------|
| $h_{R,max}$ | 18 m |
| $h_{E,min}$ | 6 m |
| T_U | 365 kN |
| T_L | 335 kN |
| N | 540 kN |
| SLEWING TORQUE DREHMOMENT | M_T 110 kNm |


K-120L ON RAILS / AUF SCHIENEN





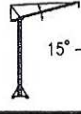

| | | | a | b | c | d | e | f | |
|--|--|-------------------------------|----|-----|-----|-----|-----|-----|-----|
| HOOK HEIGHT / HAKENHÖHE | | F | m | 34 | 30 | 26 | 22 | 18 | 14 |
|  RAIL GAUGE SPURWEITE | | m | 6 | | | | | | |
| BALLAST | | t | 25 | 22 | 20 | 17 | 15 | 15 | |
|  PARKING FOUNDATIONS * PARKIERUNGSFUNDAMENTE x4 | | t | 0 | 0 | 0 | 0 | 0 | 0 | |
|  CORNER PRESSURE ECKDRUCK | | IN SERVICE IM BETRIEB | kN | 520 | 490 | 460 | 430 | 410 | 390 |
| | | OUT OF SERVICE AUSSER BETRIEB | kN | 470 | 380 | 290 | 250 | 210 | 190 |

| | | |
|---|-------------------|-----------------------------------|
|  | 3 x 400 V - 50 Hz | CONTROL VOLTAGE / STEUER SPANNUNG |
| | 3 x 415 V - 50 Hz | |
| | 3 x 460 V - 60 Hz | |
| | | 24 VDC - 220 VAC |

| | | |
|---|-----------|------|
|  HOIST WINCH / HUBWERK | 55 kW | |
| POWER CONSUMPTION / STROMVERBRAUCH | 150 kVA | |
| | 160 Amps | |
| POWER CABLE / HAUPTKABEL | 0-100 m | 4670 |
| | 100-175 m | 4670 |
| | 175-250 m | 4695 |

| | |
|---|---------------|
|  0-2000 kg | 0 - 110 m/min |
| 0-4000 kg | 0 - 80 m/min |

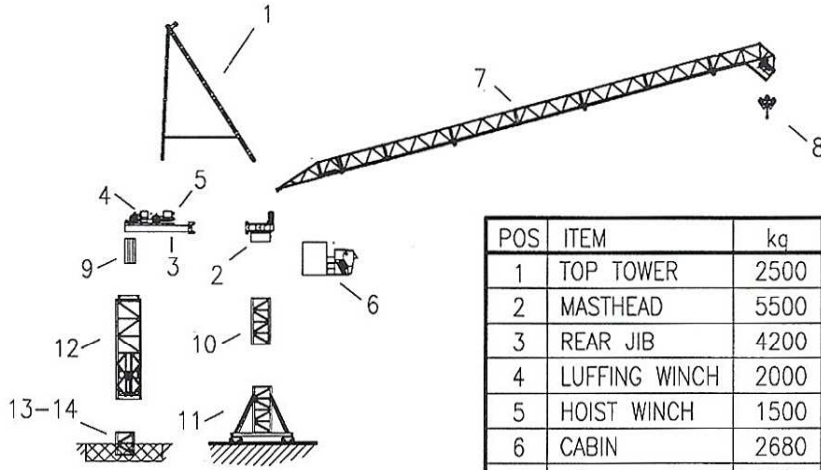
| | |
|---|--------------|
|  0-4000 kg | 0 - 55 m/min |
| 0-8000 kg | 0 - 40 m/min |

| | | |
|---|----------|-------------------------------|
|  | 1 x 5 kW | 0 - 0.7 RPM |
|  15°-84° | 55 kW | STEPLESS STUFENLOS 1.5 min |
|  | 4 x 3 kW | 25 m/min |

| | |
|----------------------------|--|
| HOIST ROPE / HUB-SEIL | ø15 mm - FILL FACTOR 0.65 - 1770 MPa BREAKING STRESS / BRUCHSPANNUNG |
| | 55 kW HOIST WINCH |
| | 500 m |
| | >500 m * |
| LUFFING WIRE / EINZIEHSEIL | ø22 mm - FILL FACTOR 0.65 - 1770 MPa BREAKING STRESS |

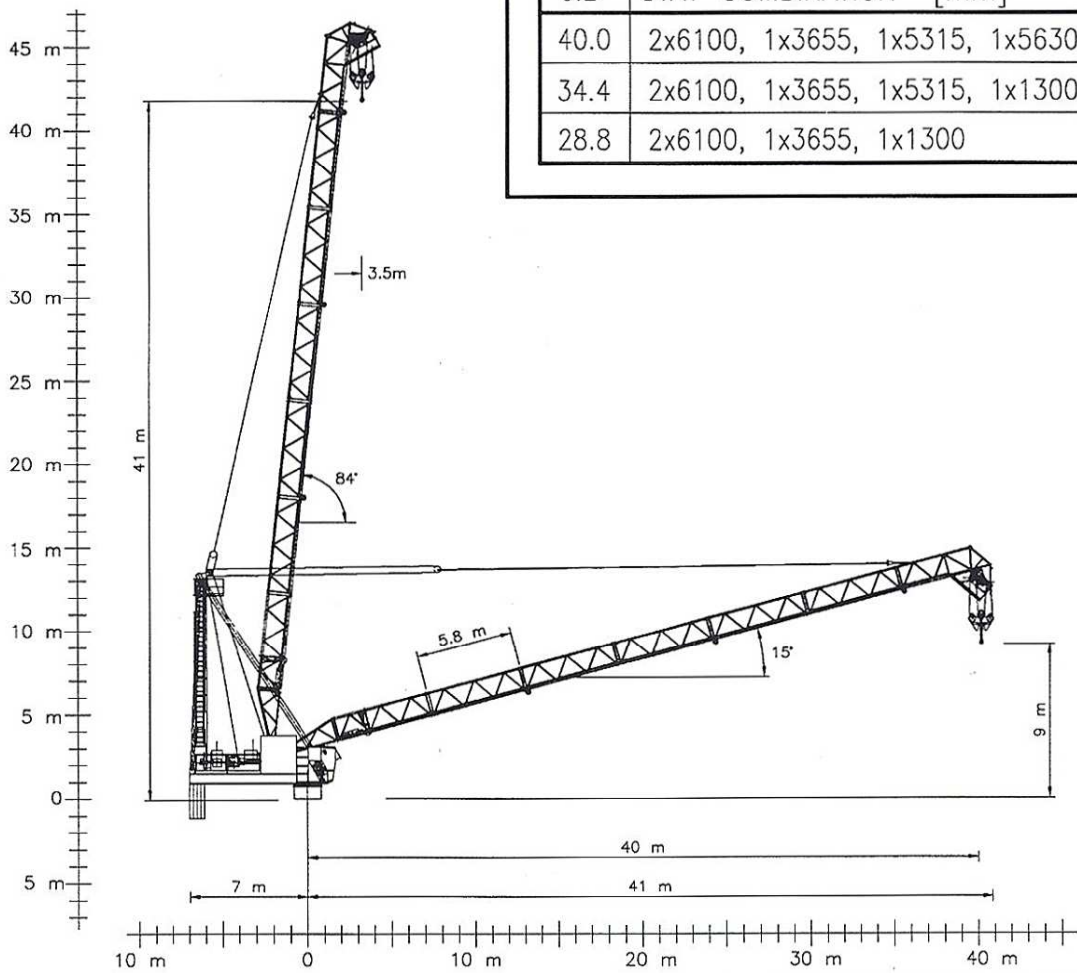
* CONSULT KGC A/S - NEHMEN SIE MIT KGC A/S KONTAKT AUF

APPROX. ERECTION WEIGHTS
UNGEFÄHRE MONTAGEGEWICHTE



| POS | ITEM | kg |
|-----|---------------|------|
| 1 | TOP TOWER | 2500 |
| 2 | MASTHEAD | 5500 |
| 3 | REAR JIB | 4200 |
| 4 | LUFFING WINCH | 2000 |
| 5 | HOIST WINCH | 1500 |
| 6 | CABIN | 2680 |
| 7 | JIB | 5100 |
| 8 | HOOK | 415 |

| POS | ITEM | kg |
|-----|---------------|------|
| 9 | COUNTERWEIGHT | 8000 |
| 10 | M16 | 1680 |
| 11 | B16 | 2200 |
| 12 | CT16 | 5700 |
| 13 | N16 (2m) | 900 |
| 14 | BASEPADS(4) | 888 |
| 15 | | |
| 16 | | |



| JIB | STAY COMBINATION [mm] |
|------|--|
| 40.0 | 2x6100, 1x3655, 1x5315, 1x5630, 1x1300 |
| 34.4 | 2x6100, 1x3655, 1x5315, 1x1300 |
| 28.8 | 2x6100, 1x3655, 1x1300 |

EXTRA EQUIPMENT AVAILABLE

WALL TIE FRAMES, CABLE DRUMS, CURVE RUNNING AND 90° TURN BOGIES, ELEVATOR, FLOOD LIGHTING

ZUSÄTZLICHE AUSRÜSTUNG VERFÜGBAR

EINSPANNRAHMEN, KABELTROMMEL, KURVENFAHRENDE UND 90° DREHSCHEMEL, AUFZUG, SCHEINWERFER

THE DESIGN AND TECHNICAL SPECIFICATIONS GIVEN ARE APPLICABLE TO THE STANDARD MACHINE OF CRANE K-120L. MODIFICATIONS ACCORDING TO SPECIAL REQUIREMENTS REGARDING FOR EXAMPLE HOOK HEIGHT, JIB LENGTH, RAIL GAUGE, ETC.. ARE AVAILABLE. PLEASE CONTACT KGC A/S

DIE KONSTRUKTIONS- UND TECHNISCHE DATEN BEZIEHEN SICH AUF DIE STANDARD AUSFÜHRUNG DES KRANTYPS K-120L. INDIVIDUELLE FORDERUNGEN Z.B AN HAKENHÖHE, AUSLEGERLÄNGE, SPURWEITE USW. KÖNNEN BERÜCKSICHTIGT WERDEN. NEHMEN SIE MIT KGC A/S KONTAKT AUF

CONVERSION OF THE UNITS FOR FORCES 10 N = 1 kg
UMRECHNUNG DER EINHEITEN FÜR KRÄFTE 10 kN = 1 ton

SUBJECT TO ALTERATIONS
ÄNDERUNGEN VORBEHALTEN

DATA SHEET K-120L
DATABLATT 940501