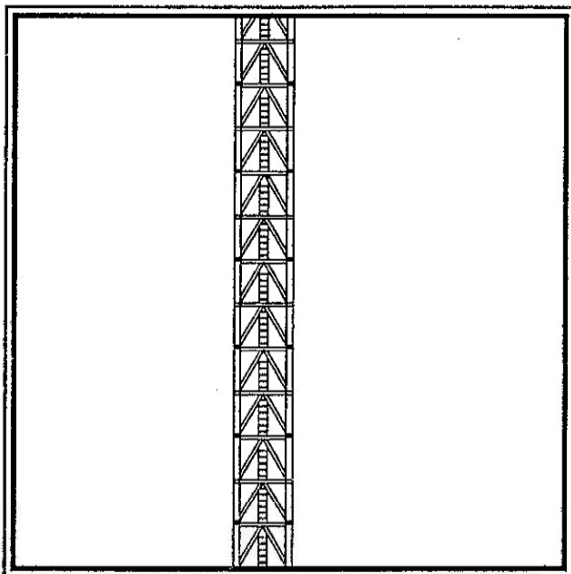


M380D CONSTRUCTION TOWER CRANE



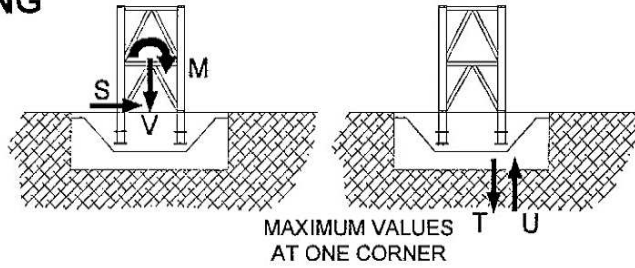
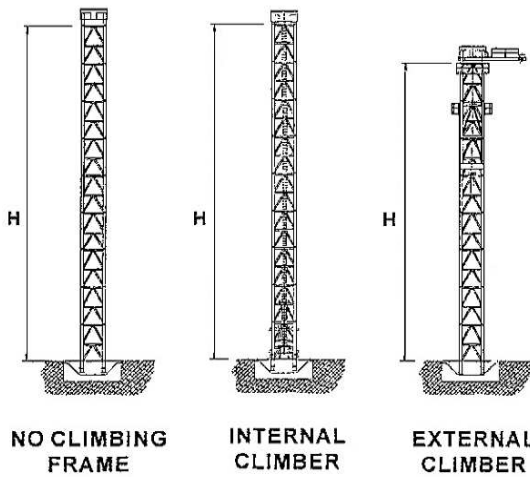
Technical Data Sheet

FVELLE
FAVCO



A subsidiary of Muhibbah Engineering (M) BHD

CRANE ON BASE - FREE STANDING



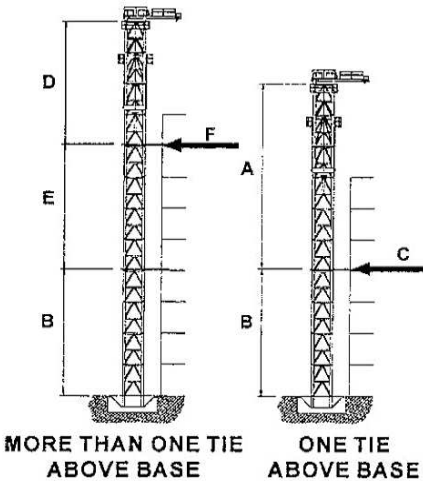
FREESTANDING TOWER HEIGHTS AND FOUNDATION REACTIONS

TOWER	NO CLIMBING FRAME			INTERNAL CLIMBING FRAME			EXTERNAL CLIMBING FRAME			UNITS
	1000	390	391	1000	390	391	1000	390	391	
H	30	36	44	30	36	44	24	32	36	(m)
M	698	849	1063	698	849	1063	668	883	998	(mT)
V	122	128	141	137	143	156	132	140	148	(T)
S	20	23	27	20	23	26	23	27	28	(T)
T	237	315	391	241	319	394	230	330	371	(T)
U	184	259	328	180	255	325	173	268	305	(T)

In-service wind speeds up to 20 m/s & out-of-service wind speeds up to 42 m/s.

Alternatives available upon request.

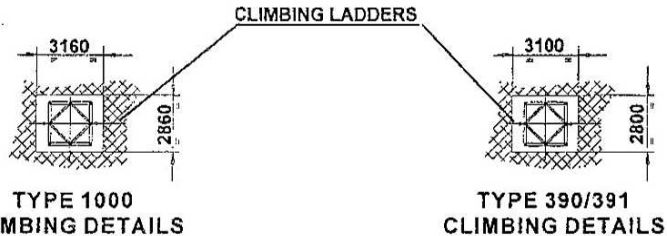
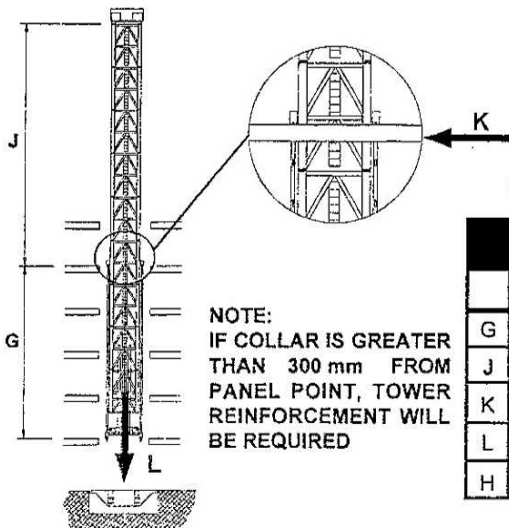
EXTERNAL CLIMBING



EXTERNAL CLIMBING

TOWER TYPES:		1000	390	391	UNITS
ONE TIE ABOVE BASE					
A	MAXIMUM HEIGHT ABOVE FIRST TIE	24	28	32	(m)
B	MINIMUM HEIGHT TO FIRST TIE	12	16	20	(m)
C	MAXIMUM HORIZONTAL TIE LOAD	107	99	94	(T)
MORE THAN ONE TIE ABOVE BASE					
D	MAXIMUM HEIGHT ABOVE TOP TIE	24	28	32	(m)
E	MINIMUM HEIGHT BETWEEN TOP TIES	12	16	16	(m)
F	MAXIMUM HORIZONTAL TIE LOAD	94	87	98	(T)

INTERNAL LADDER CLIMBING



INTERNAL LADDER CLIMBING

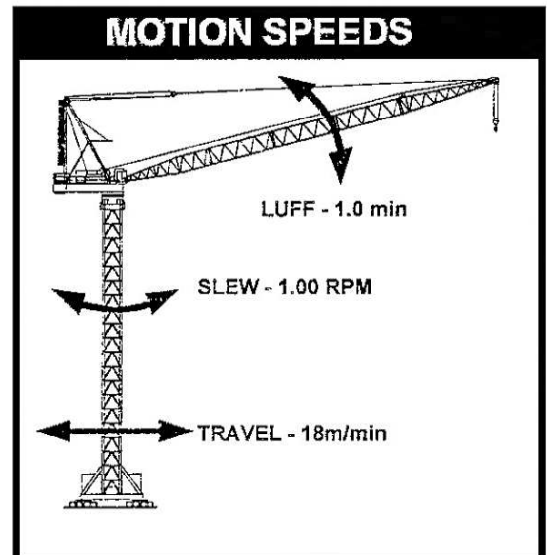
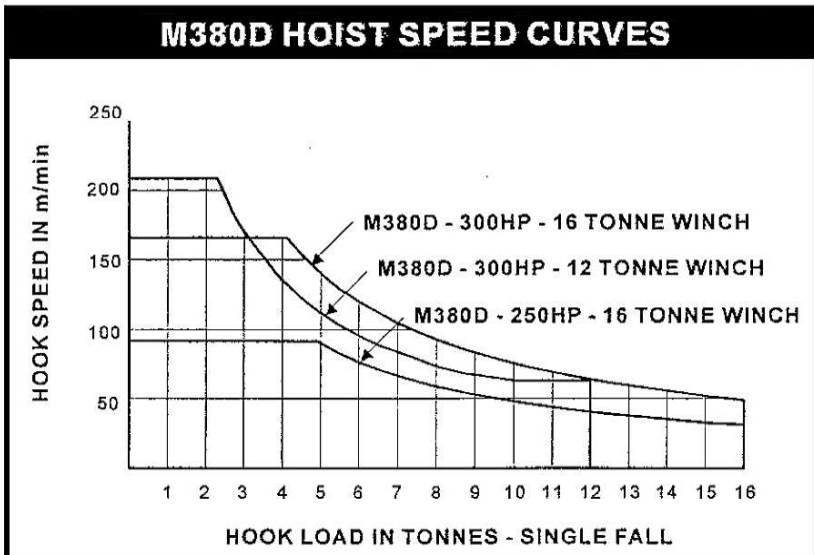
TOWER TYPES		1000	390	391	UNITS
G	MIN. HEIGHT BETWEEN COLLARS	9.0	8.5	10.5	(m)
J	MAX. HGT. ABOVE TOP TIE (WITH G)	21.0	27.5	33.5	(m)
K	MAX. HORIZONTAL LOAD (WITH G+J)	75.0	97.0	98.0	(T)
L	TOTAL VERTICAL LOAD (WITH H)	137.0	143.0	156.0	(T)
H	MAXIMUM FREESTANDING HEIGHT	30.0	36.0	44.0	(m)

RADIUS & CAPACITY

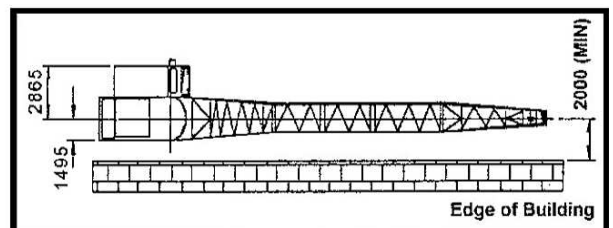
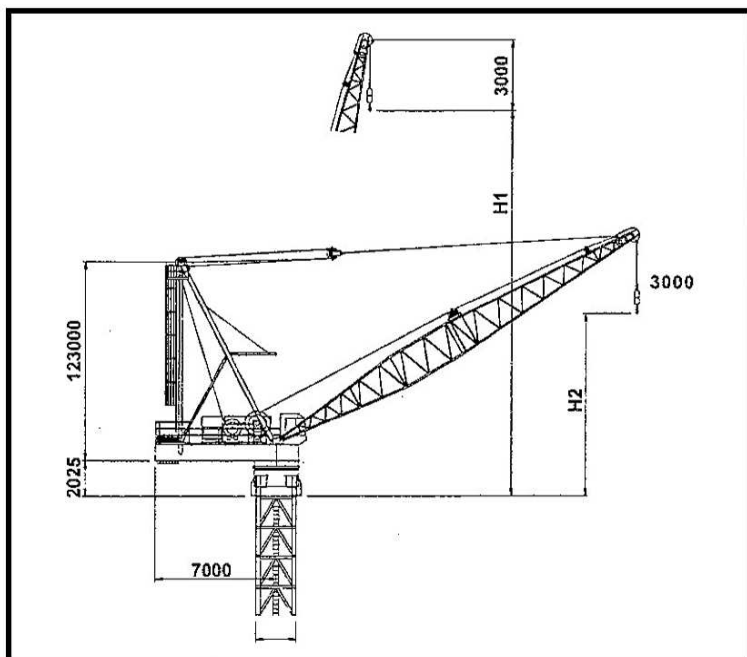
BOOM LENGTH (m)	MINIMUM RADIUS (m)	MAX RADIUS FOR 32 T (m)	RADIUS (METRES) & CAPACITY (TONNES) (16 TONNE & 12 TONNE WINCHES & 2 - FALL HOOK)																			
			5.2 (m)	10.0 (m)	15.0 (m)	17.5 (m)	20.0 (m)	25.0 (m)	27.5 (m)	30.0 (m)	32.5 (m)	35.0 (m)	37.5 (m)	40.0 (m)	42.5 (m)	45.0 (m)	47.5 (m)	50.0 (m)	52.5 (m)	55.0 (m)	57.5 (m)	60.0 (m)
64.2	5.2	-	23.5	20.0	17.0	16.0	14.8	13.2	12.8	12.2	11.0	9.7	9.0	7.8	7.0	6.3	5.8	5.1	4.4	4.1	3.8	3.4
59.6	4.8	4.8	31.3	23.8	20.0	18.8	17.0	16.0	14.0	12.6	11.0	10.1	9.0	8.2	7.0	6.7	6.0	5.5	5.0	4.5		
55.0	4.5	6.0	32.0	28.0	23.3	21.8	20.0	16.3	14.4	12.9	11.8	10.3	9.2	8.5	7.8	7.0	6.2	5.9	5.4			
50.4	4.1	10.0	32.0	32.0	27.0	25.0	21.8	16.6	15.0	13.2	12.0	10.7	9.8	8.8	8.0	7.3	6.7					
45.8	3.8	14.3	32.0	32.0	30.3	26.0	22.1	17.0	15.0	13.6	12.7	11.0	10.0	9.2	8.2							
41.2	3.5	14.4	32.0	32.0	30.6	26.8	22.4	17.2	15.2	13.9	12.5	11.4	10.3									
36.6	3.2	14.5	32.0	32.0	31.0	26.8	22.8	17.6	16.0	14.2	13.0	11.7										
32.0	3.0	14.6	32.0	32.0	31.3	27.2	22.9	17.8	16.0	14.4												
27.4	2.6	14.8	32.0	32.0	31.5	27.8	23.5	18.3														

SPEEDS

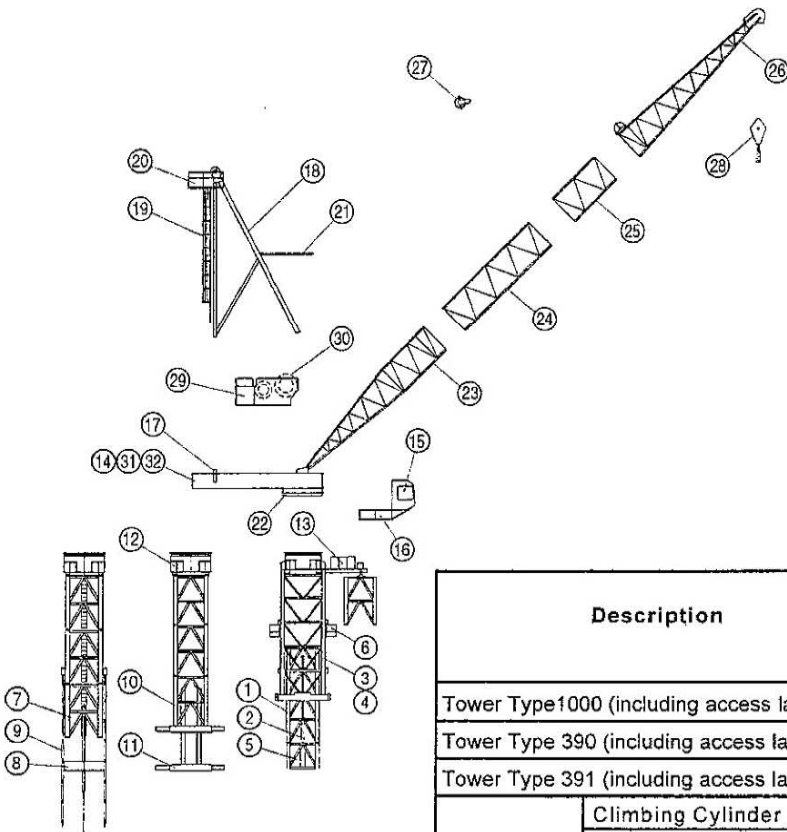
(Alternative Speed Configurations Available on Request)



DIMENSIONS



MAXIMUM RADIUS (m)	BOOM LENGTH (m)	HOOK HEIGHT	
		H1 (m)	H2 (m)
62.0	64.2	64.5	18.4
57.0	59.6	59.9	19.0
53.0	55.0	55.4	16.4
48.5	50.4	50.8	15.5
44.0	45.8	46.2	14.5
39.8	41.2	41.6	12.5
35.3	36.6	37.0	11.6
31.0	32.0	32.4	9.9
26.5	27.4	27.8	8.9



INTERNAL CLIMBING (LADDER) INTERNAL CLIMBING (3-BEAM) EXTERNAL CLIMBING



FAVELLE FAVCO CRANES (M) SDN BHD

Lot 9895, 4th Mile, Jalan Kg. Jawa
41000 Klang,
Selangor Darul Ehsan
Malaysia
Tel: 603 333 7835, 603 333 7836
Fax: 603 333 7842

FAVELLE FAVCO CRANES PTE LTD

No. 6 Sungei Kadut Loop
Singapore 729 453
Tel: 65 366 3508
Fax: 65 366 3503

FAVELLE FAVCO CRANES PTY LTD

28 Yarrunga Street Prestons
NSW 2170 Australia
P.O. Box 456 Liverpool BC
NSW 1871 Australia
Telephone: 61 2 9607 0055, 61 2 9608 2000
Fax: 61 2 9607 0022, 61 2 9607 2728
E - MAIL : favcosyd@enternet.com.au

Distributed By:

Description		Pos	Qty	L Length (m)	W Width (m)	H Height (m)	Weight per item (kg)
Tower Type1000 (including access ladders)		1	-	3.048	2.464	2.464	2400
Tower Type 390 (including access ladders)		1	-	4.000	2.398	2.395	3500
Tower Type 391 (including access ladders)		1	-	4.000	2.404	2.397	4070
External Climber	Climbing Cylinder	2	2	5.085	0.292	0.292	1400
	Side Panel	3	2	11.520	0.320	2.424	9200
	Tie	4	2	7.020	0.168	3.410	907
	Climbing Support	5	2	2.600	1.350	0.355	350
	Access Platform	6	1	3.550	1.073	1.235	199
Internal Ladder Climber	Bottom Climbing Tower (inc Cylinders)	7	1	4.000	2.411	2.400	13250
	Climbing Foot	8	1	2.400	0.350	0.710	1025
	Climbing Ladder	9	?	0.260	0.180	7.985	685
3 - Beam Climber	Bottom Climbing Tower	10	1	4.000	2.404	2.397	8500
	Climbing Beams	11	1	2.700	0.450	0.802	1630
Slew Mount		12	1	3.100	2.876	1.673	4330
Monorail Beam & Trolley		13	1	6.820	0.660	1.300	1451
Machinery Deck		14	1	8.450	3.200	1.500	9900
Cabin		15	1	1.700	1.350	2.150	1000
Cabin Support		16	1	7.325	1.520	0.100	400
Counter-weights		17	11	2.030	2.800	0.100	3000
Mast & Sheaves		18	1	11.000	2.800	0.900	4500
Mast Ladder		19	1	10.800	0.750	0.900	295
Mast Platform		20	1	2.580	1.450	0.900	195
Boom Buffer		21	1	2.296	2.750	0.230	290
Slew Ring		22	1	2.660	2.660	0.184	1176
Bottom Jib Section		23	1	13.700	2.880	2.420	1362
Jib Extension Section		24	1	9.200	2.420	2.420	1200
Jib Extension Section		25	1	4.600	2.420	2.420	820
Top Jib Section		26	1	13.700	2.880	2.420	1719
Bridle		27	1	1.135	0.220	0.890	454
2 - Fall Hook		28	1	0.890	0.420	1.940	716
Powerpack Winches		29	1	4.600	2.075	2.400	9515
Hoist Rope		30	1	400.000	-	-	1800
Split Deck - Front		31	1	3.000	2.990	1.492	5690
Split Deck - Back		32	1	5.427	2.990	1.300	6053

*Subject to change without notice