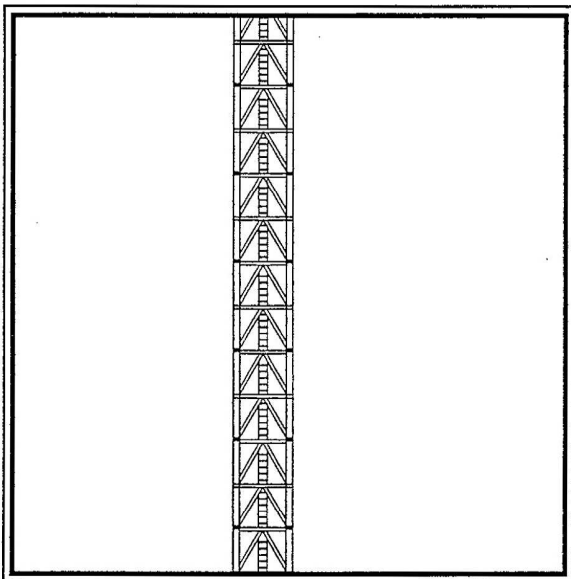


M600D CONSTRUCTION TOWER CRANE



Technical Data Sheet

**FAVELLE
FAVCO**



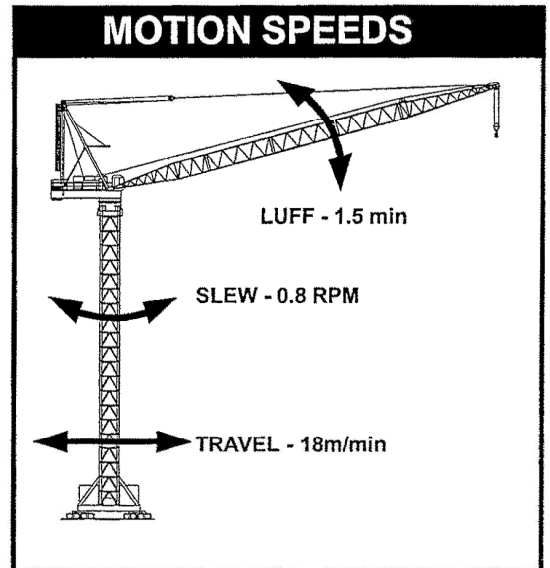
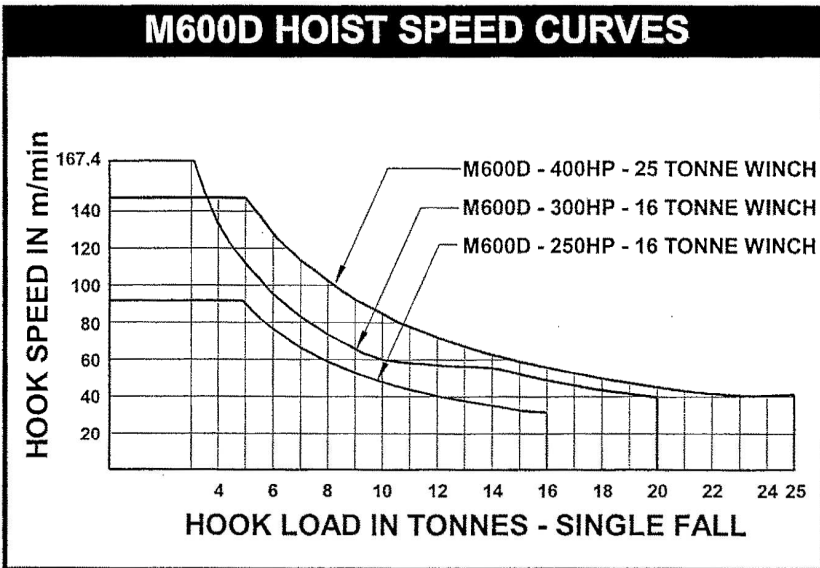
A subsidiary of Muhibbah Engineering (M) BHD

Radius & Capacity

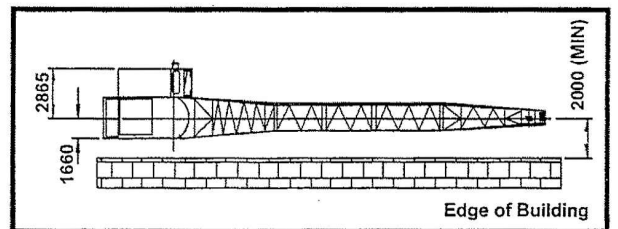
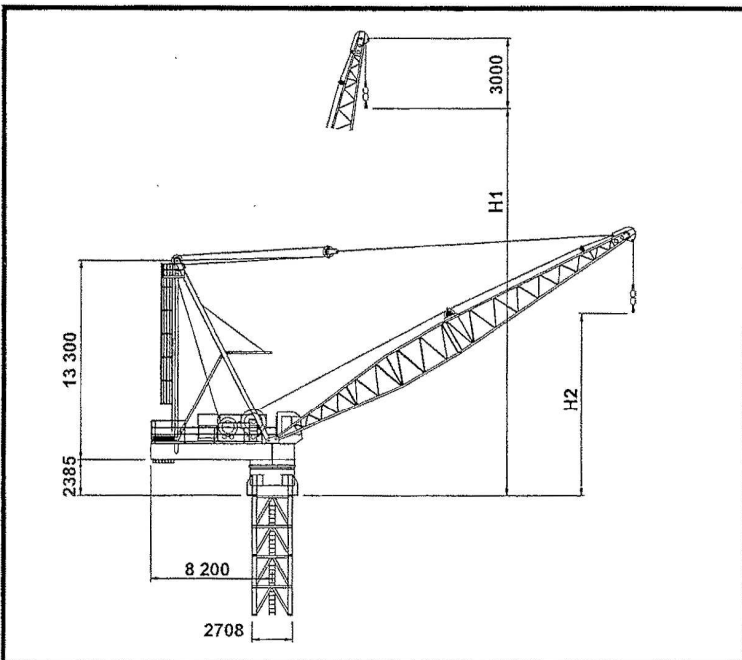
BOOM LENGTH (m)	MIN. RADIUS (m)	MAX. RADIUS FOR 50T	RADIUS (METRES) & CAPACITY (TONNES) (25 TONNE & 16 TONNE WINCHES & 2-FALL HOOK)																				
			10.0 (m)	15.0 (m)	20.0 (m)	25.0 (m)	30.0 (m)	32.5 (m)	35.0 (m)	37.5 (m)	40.0 (m)	42.5 (m)	45.0 (m)	47.5 (m)	50.0 (m)	52.5 (m)	55.0 (m)	57.5 (m)	60.0 (m)	62.5 (m)	65.0 (m)	67.5 (m)	70.0 (m)
73.4	6.2	-	25.0	21.3	17.8	15.8	13.8	12.9	12.2	11.5	10.8	10.1	9.4	8.5	7.8	7.3	6.6	5.9	5.2	4.6	4.0	3.5	3.0
68.8	6.0	-	29.7	25.5	21.7	19.1	16.5	15.4	14.4	13.5	12.6	11.7	10.8	9.9	9.0	8.3	7.5	6.9	6.1	5.5	4.8		
64.2	5.3	-	36.0	30.2	26.0	22.3	18.9	17.6	15.9	14.8	13.6	12.5	11.7	10.7	9.9	9.1	8.5	7.8	7.1				
59.6	5.0	-	42.0	35.3	29.4	24.1	20.2	18.3	16.7	15.3	14.1	13.0	12.0	11.1	10.3	9.4	8.8						
55.0	4.4	8.5	46.2	39.2	32.7	26.7	21.6	19.2	17.5	15.9	14.7	13.4	12.5	11.7	11.0	9.7							
50.4	4.2	13.8	50.0	46.9	34.9	27.8	22.1	19.7	17.9	16.3	15.1	13.9	12.9	12.3									
45.8	3.9	15.0	50.0	50.0	37.0	28.9	22.7	20.3	18.4	16.7	15.4	14.5											
41.2	3.7	15.5	50.0	50.0	38.0	29.5	23.1	20.7	18.8	17.2	15.8												
36.6	3.3	16.0	50.0	50.0	38.9	30.2	23.4	21.1	19.4														

Speeds

(Alternative Speed Configurations Available on Request)

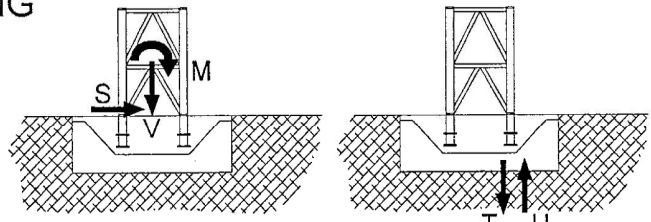
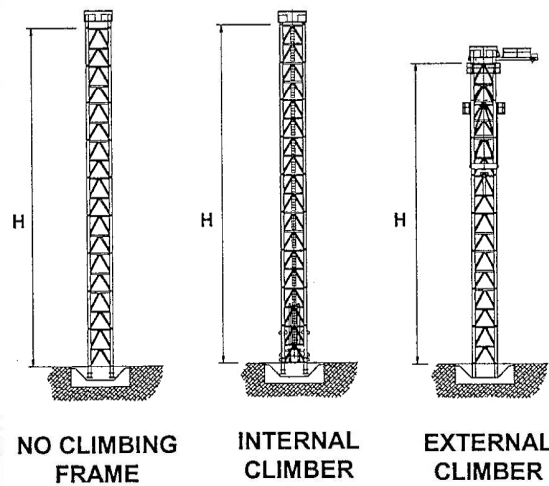


Dimensions



MAXIMUM RADIUS (m)	BOOM LENGTH (m)	HOOK HEIGHT	
		H1 (m)	H2 (m)
70.0	73.4	73.2	19.7
65.0	68.8	68.6	18.6
60.0	64.2	64.0	17.5
55.0	59.6	59.4	16.3
52.5	55.0	54.8	15.2
47.5	50.4	50.2	14.1
42.5	45.8	45.6	12.1
40.0	41.2	41.0	11.5
35.0	36.6	36.4	9.5

CRANE ON BASE - FREE STANDING



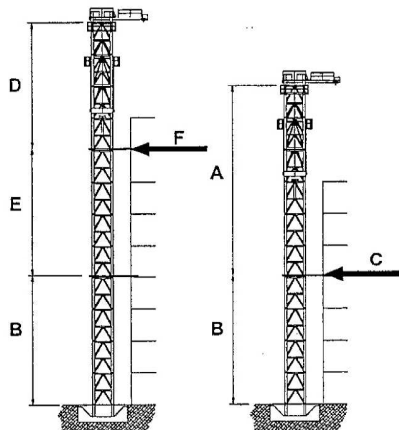
MAXIMUM VALUES AT ONE CORNER

FREESTANDING TOWER HEIGHTS AND FOUNDATION REACTIONS

TOWER	NO CLIMBING FRAME			INTERNAL CLIMBING FRAME			EXTERNAL CLIMBING FRAME			UNITS
	441	442	392	441	442	392	441	442	392	
H	36	48	36	36	44	36	32	44	36	(m)
M	884	1031	886	884	947	886	883	1099	920	(mT)
V	174	190	176	189	201	191	185	201	191	(T)
S	24	29	24	24	28	24	28	33	29	(T)
T	304	344	344	308	329	348	306	367	359	(T)
U	217	263	256	213	229	252	214	281	264	(T)

In-service wind speeds up to 20 m/s & out-of-service wind speeds up to 42 m/s. Alternatives available upon request. For long (>55m) booms, heights shown are only attainable with extra counterweight.

EXTERNAL CLIMBING

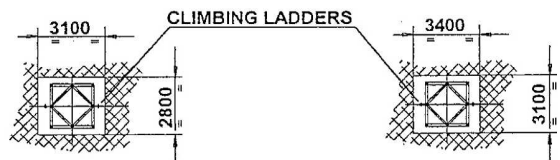
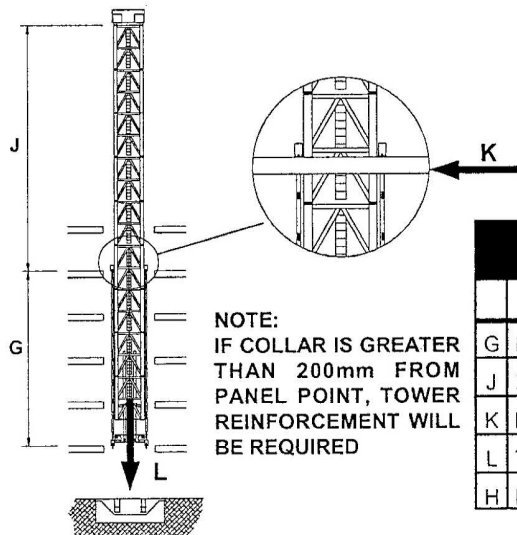


MORE THAN ONE TIE ABOVE BASE ONE TIE ABOVE BASE

EXTERNAL CLIMBING

TOWER TYPES:		441	442	392	UNITS
ONE TIE ABOVE BASE					
A	MAX. HEIGHT ABOVE FIRST TIE	32	40	32	(m)
B	MIN HEIGHT TO FIRST TIE	20	20	20	(m)
C	MAX. HORIZONTAL TIE LOAD	82	104	82	(T)
MORE THAN ONE TIE BASE					
D	MAX. HEIGHT ABOVE TOP TIE	32	40	32	(m)
E	MIN HEIGHT BETWEEN TOP TIES	16	16	16	(m)
F	MAX. HORIZONTAL TIE LOAD	85	108	85	(T)

INTERNAL LADDER CLIMBING

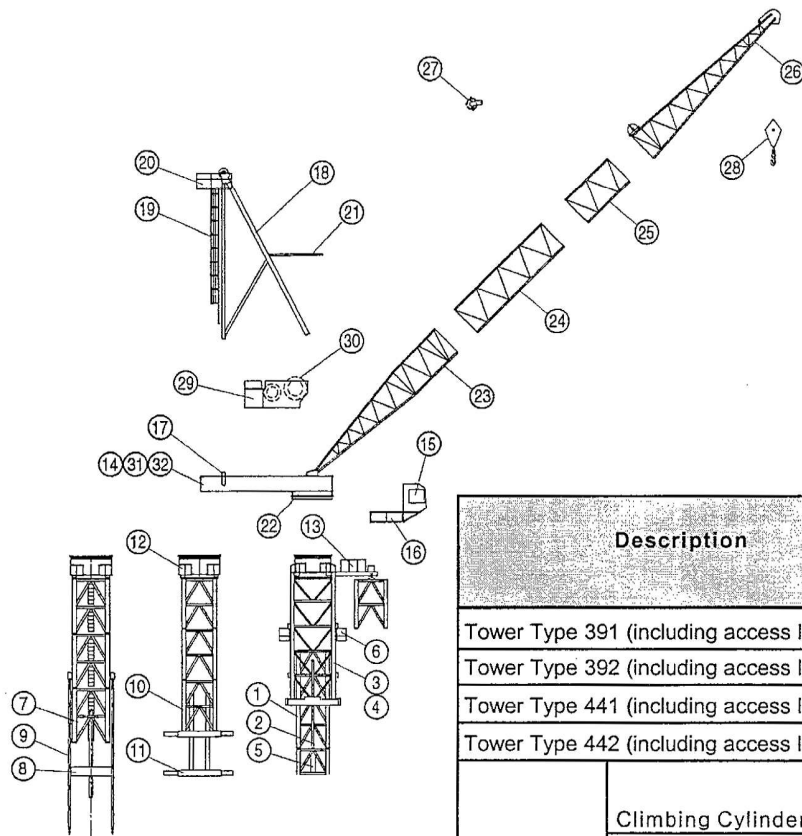


TYPE 391/392 CLIMBING DETAILS

TYPE 441/442 CLIMBING DETAILS

INTERNAL LADDER CLIMBING

TOWER TYPES		391	392	441	442	UNITS
G	MIN. DISTANCE BETWEEN COLLARS	12	12	12	12	(m)
J	MAX. DISTANCE ABOVE TOP TIE	16	24	24	32	(m)
K	MAXIMUM HORIZONTAL LOAD	67	72	72	77	(T)
L	TOTAL VERTICAL LOAD	180	191	189	201	(T)
H	MAX. FREESTANDING HEIGHT	28	36	36	44	(m)



INTERNAL CLIMBING (LADDER) INTERNAL CLIMBING (3-BEAM) EXTERNAL CLIMBING

FAVELLE FAVCO

FAVELLE FAVCO CRANES (M) SDN BHD

Lot 9895, 4th Mile, Jalan Kg. Jawa
41000 Klang,
Selangor Darul Ehsan
Malaysia
Tel: 603 333 7835, 603 333 7836
Fax: 603 333 7842

FAVELLE FAVCO CRANES PTE LTD

No. 6 Sungei Kadut Loop
Singapore 729 453
Tel: 65 366 3508
Fax: 65 366 3503

FAVELLE FAVCO CRANES PTY LTD

28 Yarrunga Street Prestons
NSW 2170 Australia
P.O. Box 456 Liverpool BC
NSW 1871 Australia
Telephone: 61 2 9607 0055, 61 2 9608 2000
Fax: 61 2 9607 0022, 61 2 9607 2728
E-MAIL: favcosyd@enternet.com.au

Distributed By:

Description		Pos	Qty	L Length (m)	W Width (m)	H Height (m)	Weight per item (kg)
Tower Type 391 (including access ladders)		1	-	4.000	2.404	2.397	4000
Tower Type 392 (including access ladders)		1	-	4.000	2.411	2.399	4900
Tower Type 441 (including access ladders)		1	-	4.000	2.721	2.709	4400
Tower Type 442 (including access ladders)		1	-	4.000	2.720	2.710	4400
External Climber	Climbing Cylinder	2	2	5.030	0.292	0.292	1500
	Side Panel	3	2	11.520	0.370	2.740	4973
	Tie	4	2	7.020	0.168	3.410	907
	Climbing Support	5	2	2.650	0.335	0.800	332
	Access Platform	6	1	3.550	1.073	1.235	199
Internal Ladder Climber	Bottom Climbing Tower (inc Cylinders)	7	1	4.000	2.720	2.710	14765
	Climbing Foot	8	1	2.708	0.350	0.880	1359
	Climbing Ladder	9	?	0.210	0.170	7.985	525
3 - Beam Climber	Bottom Climbing Tower	10	1	2.090	2.700	4.575	8509
	Climbing Beams	11	1	0.450	2.700	0.802	1630
Slew Mount		12	1	3.410	3.310	1.820	5280
Monorail Beam & Trolley		13	1	7.430	1.680	1.400	1695
Machinery Deck		14	1	9.875	3.330	1.592	13045
Cabin		15	1	1.700	1.100	2.100	1200
Cabin Support		16	1	3.790	1.440	1.500	396
Counter-weights		17	7	2.260	0.200	2.100	7450
Mast & Sheaves		18	1	14.000	0.800	3.220	5765
Mast Ladder		19	1	11.220	0.975	0.800	305
Mast Platform		20	1	2.475	1.450	0.940	208
Boom Buffer		21	1	3.515	0.228	2.810	271
Slew Ring		22	1	3.100	3.100	0.175	1950
Bottom Jib Section		23	1	13.700	3.040	2.414	2018
Jib Extension Section		24	1	9.200	2.414	2.414	1358
Jib Extension Section		25	1	4.600	2.414	2.414	804
Top Jib Section		26	1	13.533	3.106	2.414	2681
Bridle		27	1	0.750	1.170	0.890	785
2 - Fall Hook		28	1	0.890	0.332	1.940	1141
Powerpack Winches		29	1	4.250	2.600	2.250	13459
Hoist Rope		30	1	565.000	-	-	4343
Split Deck - Front		31	1	3.560	3.330	1.592	6000
Split Deck - Back		32	1	6.590	3.330	1.189	8900