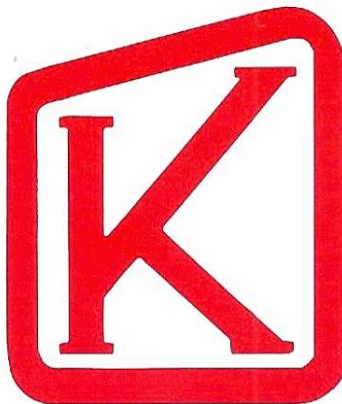


**Mast sections
M16.1 / M16.2**



KRØLL CRANES A/S

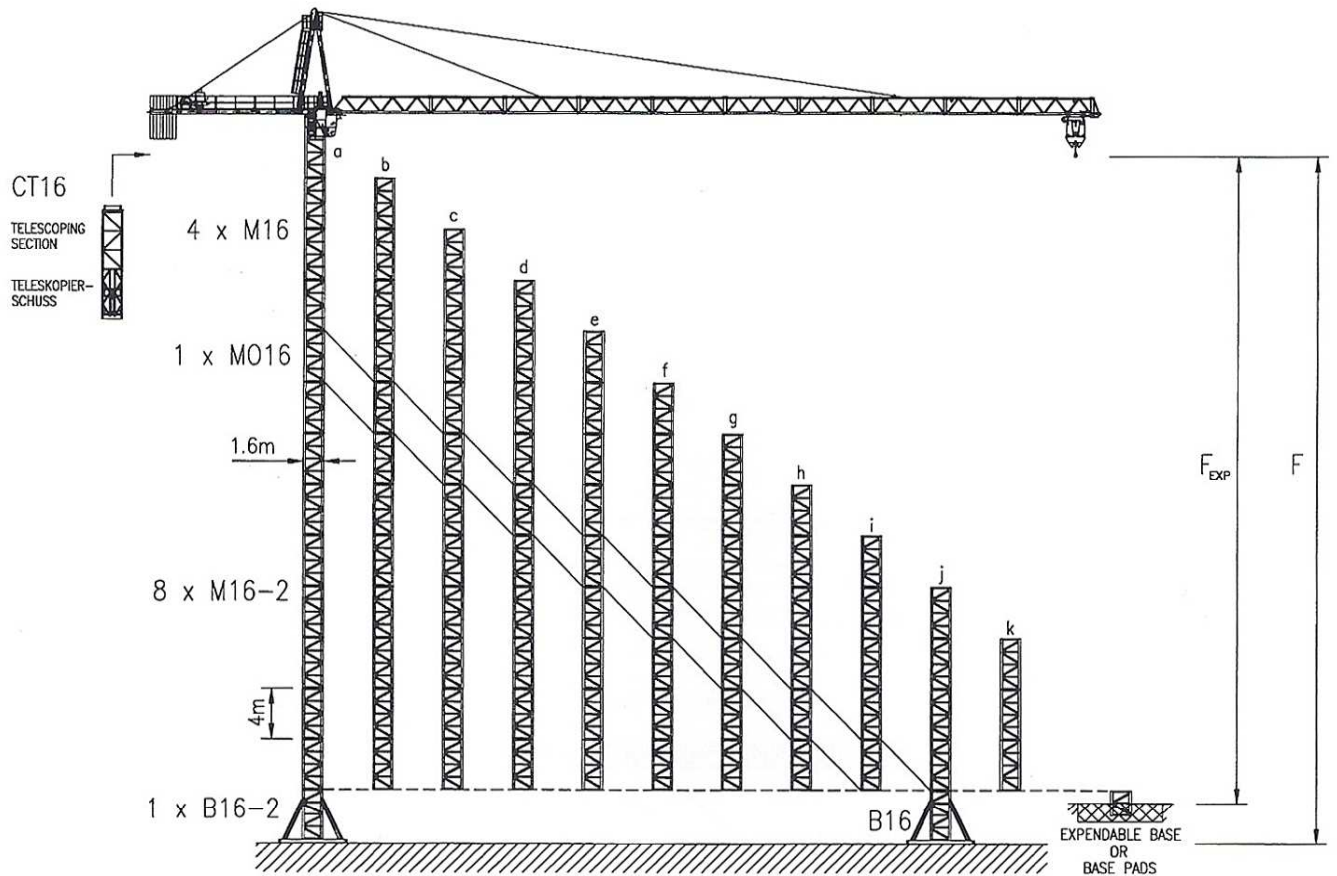
Nordkranvej 2 . DK-3540 Lyngby . Denmark . Phone: +45 48 18 74 00 . Fax: +45 48 18 88 07
E-mail: krollcranes@krollcranes.dk . www.krollcranes.com

A MEMBER OF



MUHIBBAH ENGINEERING

K-180 STATIONARY / STATIONÄR



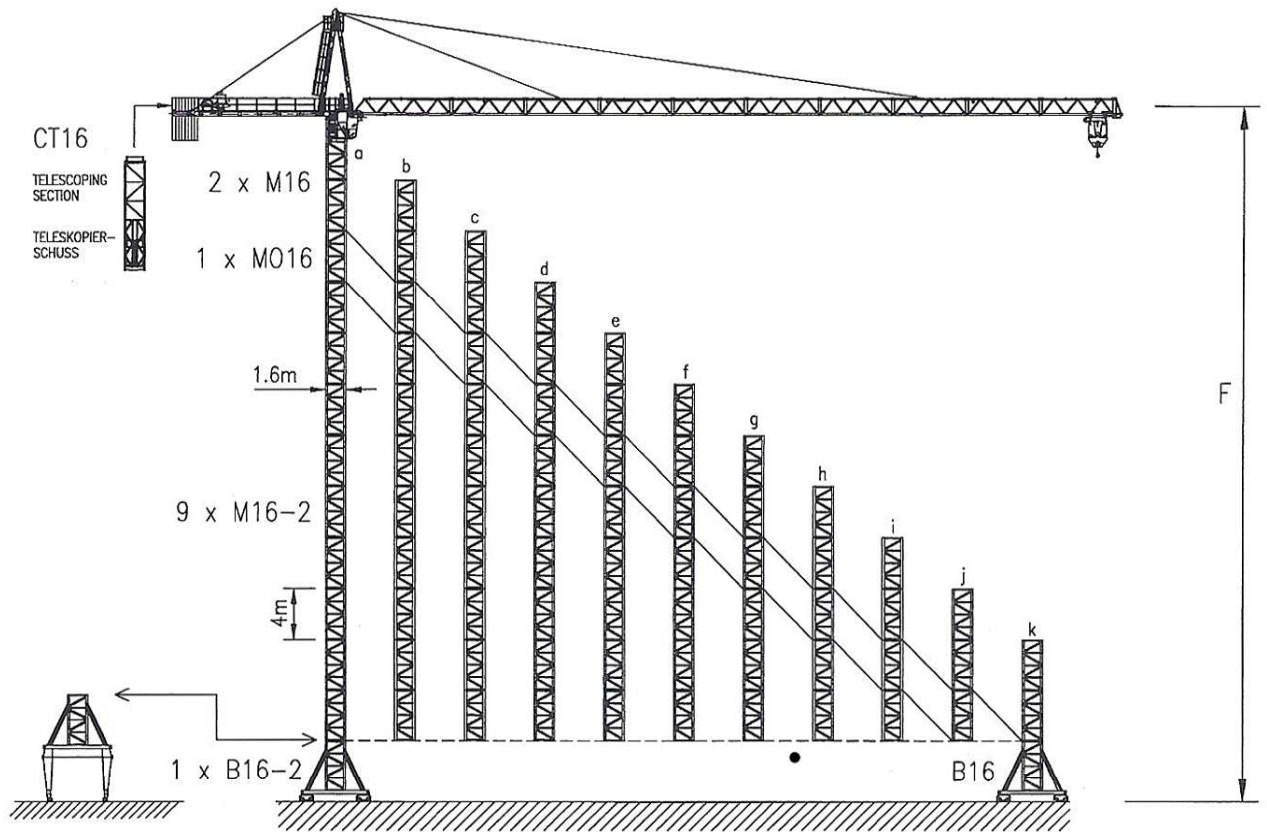
				a	b	c	d	e	f	g	h	i	j	k
HOOK HEIGHT / HAKENHÖHE		F	m	54	50	46	42	38	34	30	26	22	18	14
 CORNER PRESSURE ECKDRUCK	BALLAST	t	96	73	59	54	49	46	43	40	38	37	35	
	IN SERVICE IM BETRIEB	kN	890	830	760	720	680	640	600	570	540	510	480	
	OUT OF SERVICE AUSSER BETRIEB	kN	1230	1060	910	770	640	530	430	360	350	340	330	
 FOUNDATION WEIGHT FUNDAMENTSGEWICHT	B x B x H	F	m	54	50	46	42	38	34	30	26	22	18	14
	H=1.0m	B	m	7.9	7.5	7.1	7.0	7.0	7.0	7.0	7.0	7.0	7.0	7.0
	min 200 kN/m ²	ton	146	132	118	115	115	115	115	115	115	115	115	115
 FOUNDATION WEIGHT FUNDAMENTSGEWICHT	B x B x H	F _{EXP}	m	50	46	42	38	34	30	26	22	18	14	10
	H=1.4m	B	m	7.3	6.9	6.5	6.5	6.1	6.0	5.9	5.8	5.7	5.7	5.6
	min 200 kN/m ²	ton	175	157	139	139	122	118	114	110	107	107	103	

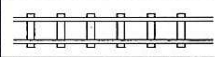
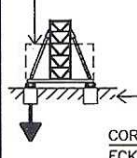

JIB CONFIGURATION

AUSLEGER KONFIGURATION

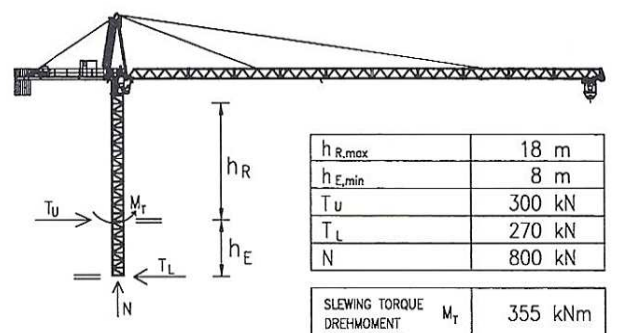
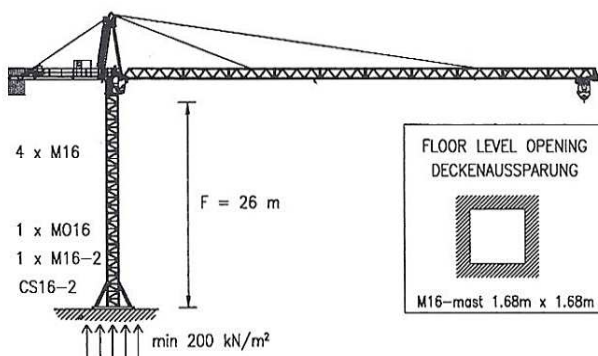
JIB LENGTH AUSLEGER- LÄNGE	INNER SECTION	HEAVY SECTION	HEAVY EYE SECTION	HEAVY SECTION	LIGHT SECTION	LIGHT EYE SECTION	LIGHT SECTION	INNER STAY INNERE ZUGSTANG						OUTER STAY ÄUSSERE ZUGSTANG					COUNTERWEIGHT GEGENGEWICHT			
								1900 mm	700 mm	3110 mm	6100 mm	5440 mm	1150 mm	1110 mm	2450 mm	6100 mm	5670 mm	5710 mm	1150 mm	3000 kg	500 kg	TOTAL t
								1	1	1	1	1	1	1	1	4	1	2	1			
60 m	1	1	1	1	3	1	2	1	1	1	1	1	1	1	1	4	1	2	1	8	0	24.0
54 m	1	1	1	1	3	1	1	1	1	1	1	1	1	1	1	4	1	2	1	7	0	21.0
48 m	1	1	1	1	3	1	0	1	1	1	1	1	1	1	1	4	1	2	1	7	0	21.0
42 m	1	1	1	1	2	1	0	1	1	1	1	1	1	1	1	4	1	1	1	6	0	18.0
36 m	1	1	1	1	1	1	0	1	1	1	1	1	1	1	1	4	1	0	1	5	1	15.5
31 m	1	0	1	2	0	1	0	1	1	1	1	0	1	1	1	4	0	0	1	4	3	13.5


K-180 ON RAILS / AUF SCHIENEN


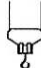



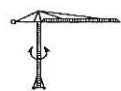
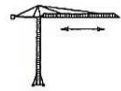
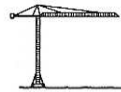
		a	b	c	d	e	f	g	h	i	j	k	
HOOK HEIGHT / HAKENHÖHE	F	m	51	47	43	39	35	31	27	23	19	15	11
 RAIL GAUGE / SPURWEITE	I	m	6										
BALLAST	t	75	64	57	51	45	41	37	34	32	30	30	
 PARKING FOUNDATIONS / PARKIERUNGSFUNDAMENTE x4	t	0	0	0	0	0	0	0	0	0	0	0	
 CORNER PRESSURE / ECKDRUCK	IN SERVICE / IM BETRIEB	kN	970	900	830	770	710	660	620	580	540	510	480
	OUT OF SERVICE / AUSSER BETRIEB	kN	1120	960	820	690	550	450	390	360	350	330	330

K-180 CLIMBER / KLETTERKRAN



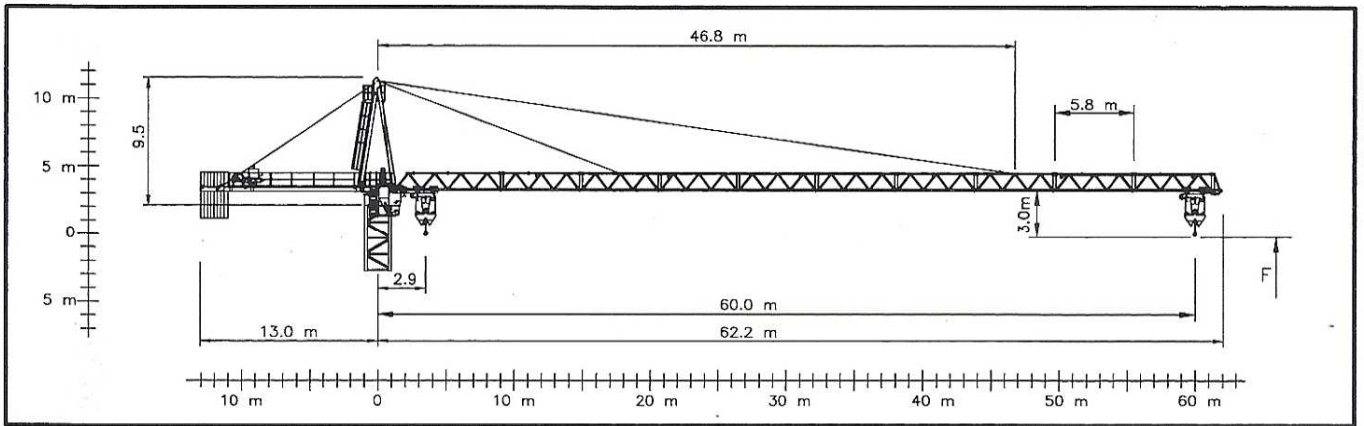
	STANDARD VOLTAGES	CONTROL VOLTAGE / STEUER SPANNUNG
	3 x 380-440 V, 50-60 Hz	24 VDC - 220 VAC

 HOIST WINCH/HUBWERK	30 kW (optional)	56 kW (standard)
POWER CONSUMPTION/STROMVERBRAUCH	60 kVA	90 kVA
FUSE / SICHERUNG	100 Amps	125 Amps
POWER CABLE / HAUPTKABEL	0-100 m: 4G35	0-100 m: 4G50
	100-175 m: 4G35	100-175 m: 4G70
	175-250 m: 4G50	175-250 m: 4G95
	0-2500 kg	0-60 m/min
	0-5000 kg	0-30 m/min
	0-5000 kg	0-30 m/min
	0-10000 kg	0-15 m/min

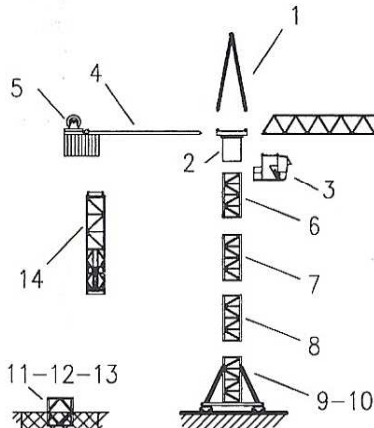
	2 x 5 kW	MAX JIB MAX AUSLEGER	0 - 0.7 RPM
	7.1 kW	0-5 t 5-10 t	0 - 70 m/min 0 - 50 m/min
	4 kW units	F _{max}	25 m/min

HOIST ROPE / HUB-SEIL	ø15 mm - FILL FACTOR 0.65 - 1770 MPa BREAKING STRESS / BRUCHSPANNUNG
	56 kW HOIST WINCH
	500 m
	>500 m *
TROLLEY ROPE / LAUFKATZE-SEIL	ø8 mm

* CONSULT KRÖLL CRANES A/S - NEHMEN SIE MIT KRÖLL CRANES A/S KONTAKT AUF



APPROX. ERECTION WEIGHTS
UNGEFÄHRE MONTAGEGEWICHTE



L	kg
60	10200
54	9700
48	9200
42	8700
36	8200
31	7700

POS	ITEM	kg
1	TOP TOWER	2175
2	MASTHEAD	3824
3	CABIN	2000
4	REAR JIB	4668
5	HOIST WINCH	1875
6	M16	1680
7	MO16	1760
8	M16-2	4020

POS	ITEM	kg
9	B16, 6m	2200
10	B16-2, 6m	4000
11	N16	900
12	N16-2	1500
13	BASE PADS (4)	888
14	CT16	5700
15		
16		

EXTRA EQUIPMENT AVAILABLE
WALL TIE FRAMES, CABLE DRUMS, CURVE RUNNING AND 90° TURN BOGIES, ELEVATOR, FLOOD LIGHTING

ZUSÄTZLICHE AUSRÜSTUNG VERFÜGBAR
EINSPANNRAHMEN, KABELTROMMEL, KURVENFAHRENDE UND 90° DREHSCHEMEL, AUFZUG, SCHEINWERFER

THE DESIGN AND TECHNICAL SPECIFICATIONS GIVEN ARE APPLICABLE TO THE STANDARD MACHINE OF CRANE K-180. MODIFICATIONS ACCORDING TO SPECIAL REQUIREMENTS REGARDING FOR EXAMPLE HOOK HEIGHT, JIB LENGTH, RAIL GAUGE, ETC.. ARE AVAILABLE. PLEASE CONTACT KRÖLL CRANES A/S

DIE KONSTRUKTIONS- UND TECHNISCHEN DATEN BEZIEHEN SICH AUF DIE STANDARD AUSFÜHRUNG DES KRANTYPS K-180. INDIVIDUELLE FORDERUNGEN Z.B AN HAKENHÖHE, AUSLEGERLÄNGE, SPURWEITE USW. KÖNNEN BERÜCKSICHTIGT WERDEN. NEHMEN SIE MIT KRÖLL CRANES A/S KONTAKT AUF

CONVERSION OF THE UNITS FOR FORCES UMRECHNUNG DER EINHEITEN FÜR KRÄFTE	10 N = 1 kg 10 kN = 1 ton	SUBJECT TO ALTERATIONS ÄNDERUNGEN VORBEHALTEN	F.E.M	DATA SHEET DATABLATT	K-180 010401
---	------------------------------	--	-------	-------------------------	-----------------