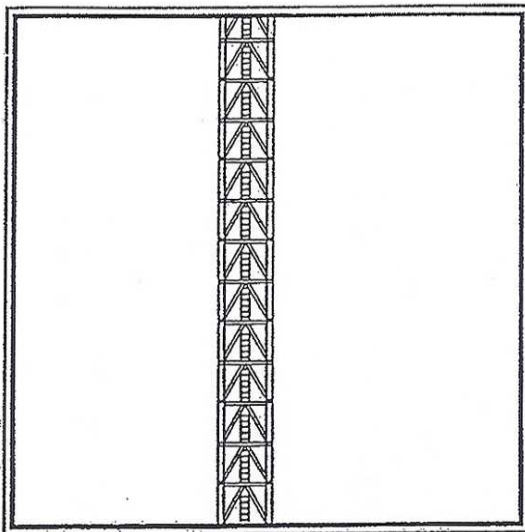


M440D CONSTRUCTION TOWER CRANE



Technical Data Sheet

**FAVELLE
FAVCO**



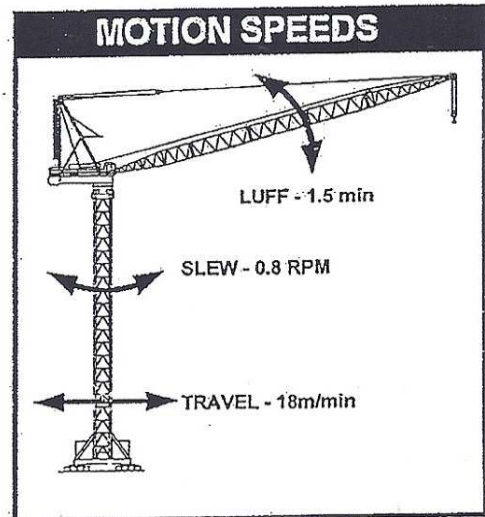
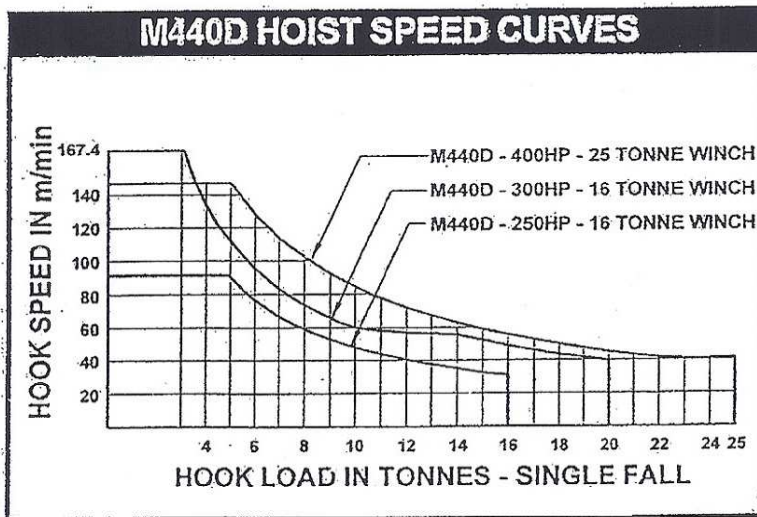
A subsidiary of Muhibbah Engineering (M) BHD

Radius & Capacity

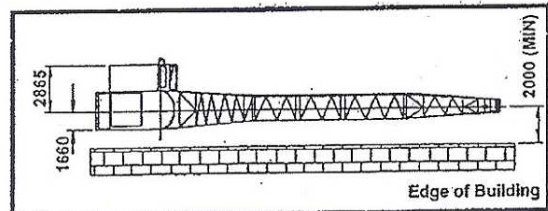
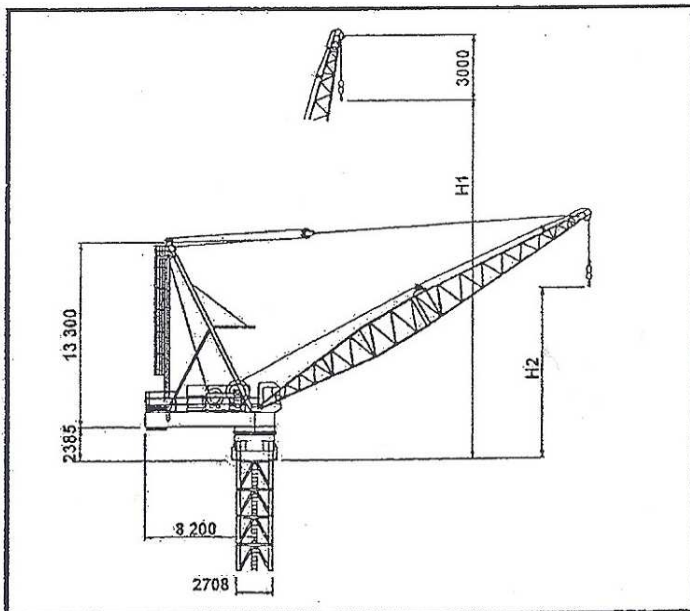
BOOM LENGTH (m)	MINIMUM RADIUS (m)	MAX RADIUS FOR 32T	RADIUS (METRES) & CAPACITY (TONNES) (16 TONNE WINCHES & 2-FALL HOOK)																		
			10.0 (m)	15.0 (m)	20.0 (m)	25.0 (m)	30.0 (m)	32.5 (m)	35.0 (m)	37.5 (m)	40.0 (m)	42.5 (m)	45.0 (m)	47.5 (m)	50.0 (m)	52.5 (m)	55.0 (m)	57.5 (m)	60.0 (m)	62.5 (m)	66.0 (m)
68.8	6.0	-	25.0	22.5	19.5	17.2	15.0	13.7	12.6	11.3	10.2	9.2	8.3	7.6	6.9	6.1	5.5	4.9	4.3	3.6	2.7
64.2	5.3	-	30.6	26.3	23.0	20.0	16.9	15.2	13.6	12.4	11.2	10.2	9.3	8.4	7.6	6.9	6.3	5.7	4.8		
59.6	5.0	-	32.0	29.8	25.8	21.7	17.5	15.8	14.2	12.9	11.8	10.7	9.7	8.8	8.0	7.3	6.6				
55.0	4.4	19.0	32.0	32.0	29.8	22.8	18.1	16.3	14.6	13.2	12.0	11.0	10.0	9.3	8.5	8.0					
50.4	4.2	19.0	32.0	32.0	30.2	23.0	18.3	16.6	14.9	13.6	12.4	11.4	10.4	9.5							
45.8	3.9	19.2	32.0	32.0	30.6	23.5	18.7	17.0	15.4	14.1	12.8	11.7									
41.2	3.7	19.3	32.0	32.0	30.7	23.8	19.0	17.3	15.6	14.2	13.1										
36.6	3.3	19.5	32.0	32.0	30.8	24.0	19.4	17.7	16.1												
32.0	3.0	19.6	32.0	32.0	31.3	24.2	19.5														

Speeds

(Alternative Speed Configurations Available on Request)

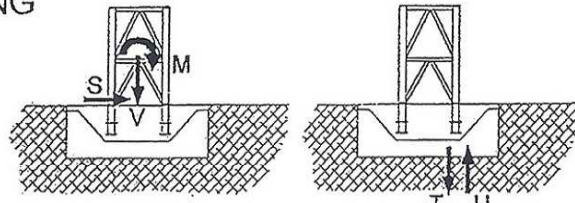
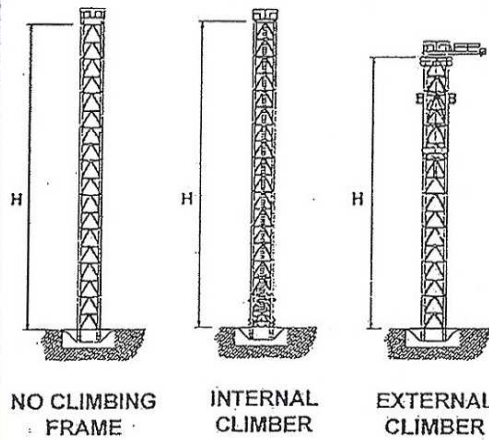


Dimensions



MAXIMUM RADIUS (m)	BOOM LENGTH (m)	HOOK HEIGHT	
		H1 (m)	H2 (m)
65.0	68.8	68.6	18.6
60.0	64.2	64.0	17.5
55.0	59.6	59.4	16.3
52.5	55.0	54.8	15.2
47.5	50.4	50.2	14.1
42.5	45.8	45.6	12.1
40.0	41.2	41.0	11.5
35.0	36.6	36.4	9.5
30.0	32.0	31.8	8.7

CRANE ON BASE - FREE STANDING



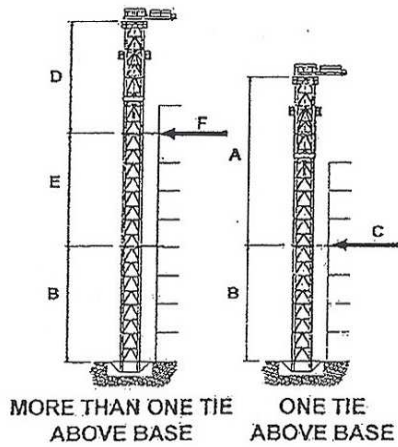
MAXIMUM VALUES AT ONE CORNER

FREESTANDING TOWER HEIGHTS AND FOUNDATION REACTIONS

TOWER	NO CLIMBING FRAME			INTERNAL CLIMBING FRAME			EXTERNAL CLIMBING FRAME			UNITS
	441	442	392	441	442	392	441	442	392	
H	40	48	40	40	48	40	36	44	36	(m)
M	885	1122	877	885	1122	877	930	1191	923	(mT)
V	176	188	178	191	203	193	187	199	189	(T)
S	26	29	25	26	29	25	29	33	29	(T)
T	301	369	341	305	373	345	312	392	351	(T)
U	225	292	261	222	288	257	236	310	273	(T)

In-service wind speeds up to 20 m/s & out-of-service wind speeds up to 42 m/s. Alternatives available upon request. For long (>55m) booms, heights shown are only attainable with extra counterweight.

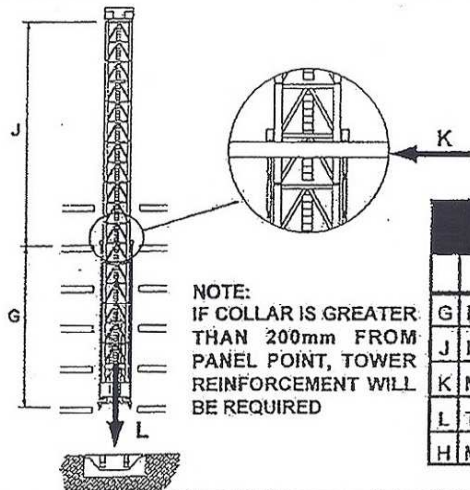
EXTERNAL CLIMBING



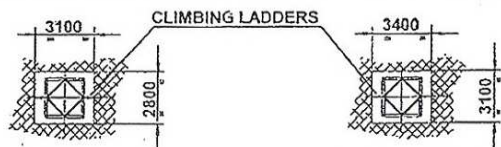
EXTERNAL CLIMBING

TOWER TYPES:		441	442	392	UNITS
ONE TIE ABOVE BASE					
A	MAX. HEIGHT ABOVE FIRST TIE	32	40	32	(m)
B	MIN HEIGHT TO FIRST TIE	16	20	20	(m)
C	MAX. HORIZONTAL TIE LOAD	104	111	88	(T)
MORE THAN ONE TIE BASE					
D	MAX. HEIGHT ABOVE TOP TIE	32	40	32	(m)
E	MIN HEIGHT BETWEEN TOP TIES	16	20	16	(m)
F	MAX. HORIZONTAL TIE LOAD	93	99	92	(T)

INTERNAL LADDER CLIMBING



NOTE: IF COLLAR IS GREATER THAN 200mm FROM PANEL POINT, TOWER REINFORCEMENT WILL BE REQUIRED

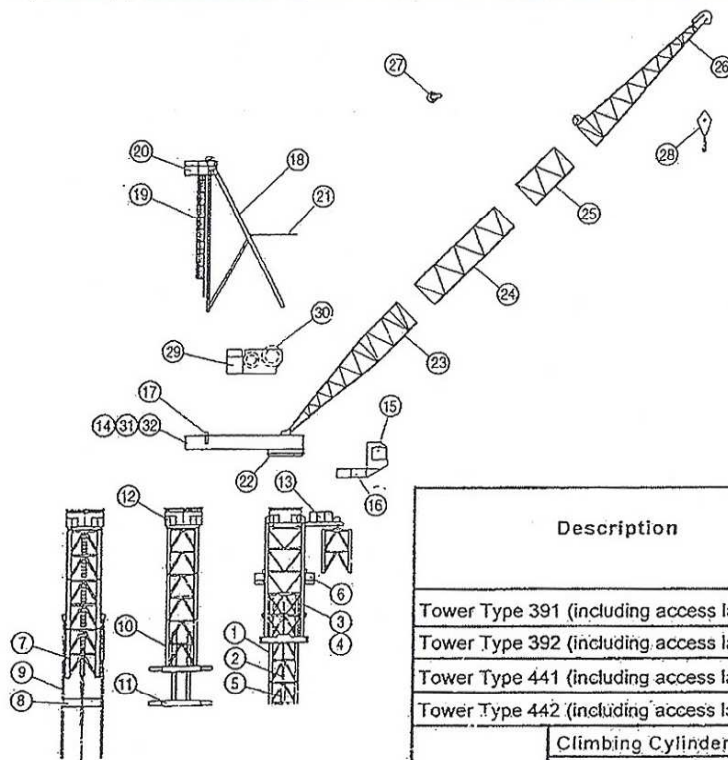


TYPE 391/392 CLIMBING DETAILS

TYPE 441/442 CLIMBING DETAILS

INTERNAL LADDER CLIMBING

TOWER TYPES		391	392	441	442	UNITS
G	MIN. DISTANCE BETWEEN COLLARS	10.5	12	12	12	(m)
J	MAX. DISTANCE ABOVE TOP TIE	33.5	28	28	36	(m)
K	MAXIMUM HORIZONTAL LOAD	98.0	71	71	90	(T)
L	TOTAL VERTICAL LOAD	156.0	193	191	203	(T)
H	MAX. FREESTANDING HEIGHT	44.0	40	40	48	(m)



INTERNAL CLIMBING (LADDER) INTERNAL CLIMBING (3-BEAM) EXTERNAL CLIMBING



FAVELLE FAVCO CRANES (M) SDN BHD

Lot 9895, 4th Mile, Jalan Kg. Jawa
41000 Klang,
Selangor Darul Ehsan
Malaysia
Tel: 603 333 7835, 603 333 7836
Fax: 603 333 7842

FAVELLE FAVCO CRANES PTE LTD

No. 6 Sungei Kadut Loop
Singapore 729 453
Tel: 65 366 3508
Fax: 65 366 3503

FAVELLE FAVCO CRANES PTY LTD

28 Yarrunga Street Prestons
NSW 2170 Australia
P.O. Box 456 Liverpool BC
NSW 1871 Australia
Telephone: 61 2 9607 0055, 61 2 9608 2000
Fax: 61 2 9607 0022, 61 2 9607 2728
E - MAIL : favcosyd@internet.com.au

Distributed By:

Description		Pos	Qty	L Length (m)	W Width (m)	H Height (m)	Weight per item (kg)
Tower Type 391 (including access ladders)		1	-	4.000	2.404	2.397	4000
Tower Type 392 (including access ladders)		1	-	4.000	2.411	2.399	4900
Tower Type 441 (including access ladders)		1	-	4.000	2.700	2.700	4100
Tower Type 442 (including access ladders)		1	-	4.000	2.721	2.709	4400
External Climber	Climbing Cylinder	2	2	5.030	0.292	0.292	1500
	Side Panel	3	2	11.520	0.370	2.740	4973
	Tie	4	2	7.020	0.168	3.410	907
	Climbing Support	5	2	2.650	0.335	0.800	332
	Access Platform	6	1	3.550	1.073	1.235	199
Internal Ladder Climber	Bottom Climbing Tower (inc Cylinders)	7	1	4.000	2.709	2.721	9136
	Climbing Foot	8	1	2.728	0.610	0.880	1435
	Climbing Ladder	9	?	0.210	0.170	7.985	525
3 - Beam Climber	Bottom Climbing Tower	10	1	2.090	2.700	4.575	8509
	Climbing Beams	11	1	0.450	2.700	0.802	1630
Slew Mount		12	1	3.200	2.709	1.814	5050
Monorail Beam & Trolley		13	1	7.430	1.680	1.400	1695
Machinery Deck		14	1	9.825	3.320	1.492	12500
Cabin		15	1	1.700	1.100	2.100	1200
Cabin Support		16	1	4.000	1.335	1.325	330
Counter-weights		17	5	2.390	0.200	2.000	7600
Mast & Sheaves		18	1	14.000	0.800	3.220	5765
Mast Ladder		19	1	11.220	0.975	0.800	305
Mast Platform		20	1	2.475	1.450	0.940	208
Boom Buffer		21	1	3.515	0.228	2.810	271
Slew Ring		22	1	3.100	3.100	0.175	1950
Bottom Jib Section		23	1	13.700	3.040	2.414	2018
Jib Extension Section		24	1	9.200	2.414	2.414	1358
Jib Extension Section		25	1	4.600	2.414	2.414	804
Top Jib Section		26	1	13.533	2.414	2.414	2681
Bridle		27	1	1.055	0.630	0.890	213
2 - Fall Hook		28	1	0.890	0.332	1.940	1141
Powerpack Winches		29	1	4.250	2.600	2.250	13459
Hoist Rope		30	1	565.000	-	-	4343
Split Deck - Front		31	1	3.550	3.320	1.492	7763
Split Deck - Back		32	1	6.585	3.280	1.100	8631

*Subject to change without notice