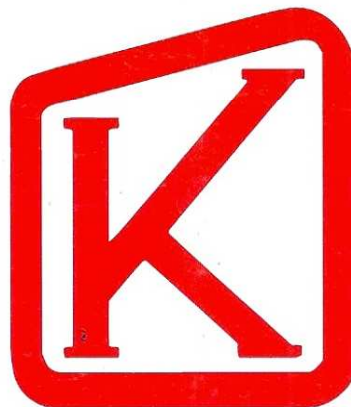
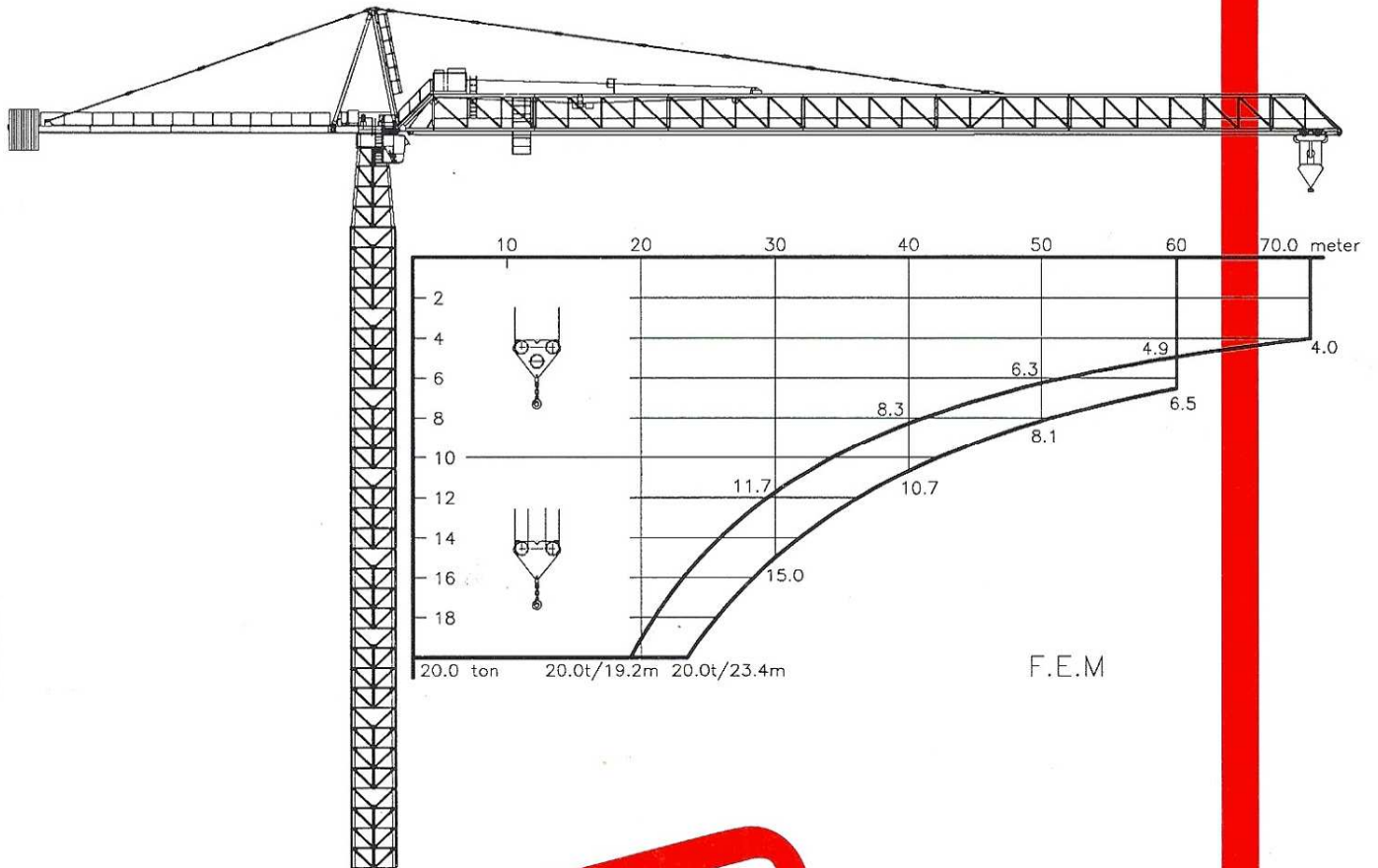


TECHNICAL
DATA

K-400D



KRØLL GIANT CRANES

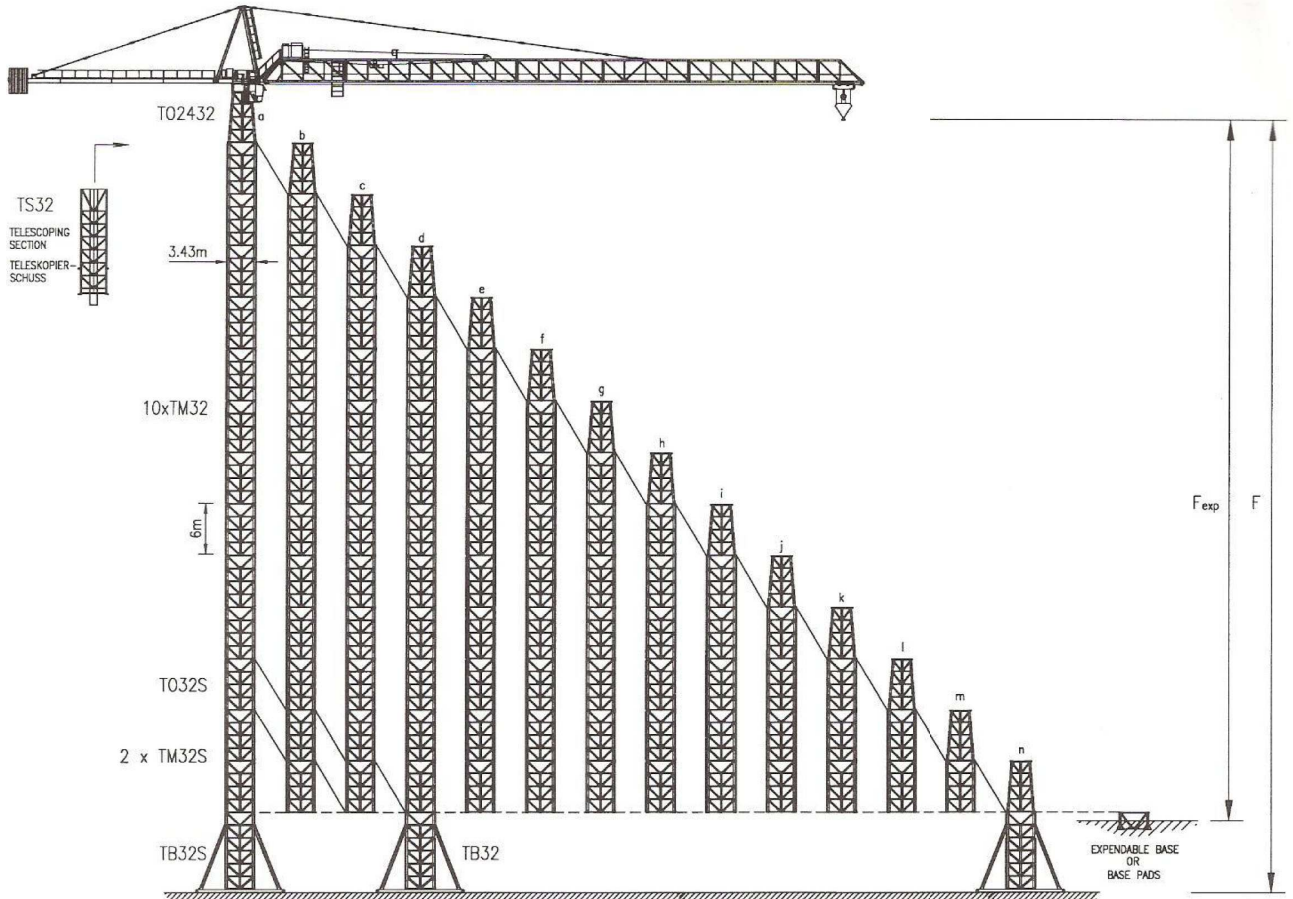
Nordkranvej 2 · DK-3540 Lyngø · Denmark

Phone +45 42 18 74 00

Telex: 42175 kroll dk

Telefax: +45 42 18 88 07

K-400D STATIONARY / STATIONÄR



HOOK HEIGHT / HAKENHÖHE	F	m	a	b	c	d	e	f	g	h	i	j	k	l	m	n
	BALLAST	t	150	150	150	145	102	64	40	40	40	40	40	40	40	40
	FOUNDATIONS 4x	t	38	24	11	-	-	-	-	-	-	-	-	-	-	-
	IN SERVICE IM BETRIEB	kN	1710	1610	1540	1450	1280	1130	1040	960	920	880	840	800	770	740
	OUT OF SERVICE AUSSER BETRIEB	kN	2670	2420	2180	1950	1630	1370	1120	900	760	640	580	570	560	550

B x B x H	F	m	a	b	c	d	e	f	g	h	i	j	k	l	m	n
	H=1.2m (1.0m FOR B=9.6m)	B	11.9	11.4	10.8	10.2	9.8	9.6	9.6	9.6	9.6	9.6	9.6	9.6	9.6	9.6
	FOUNDATION WEIGHT FUNDAMENTSGEWICHT	ton	408	375	335	299	276	221	221	221	221	221	221	221	221	221

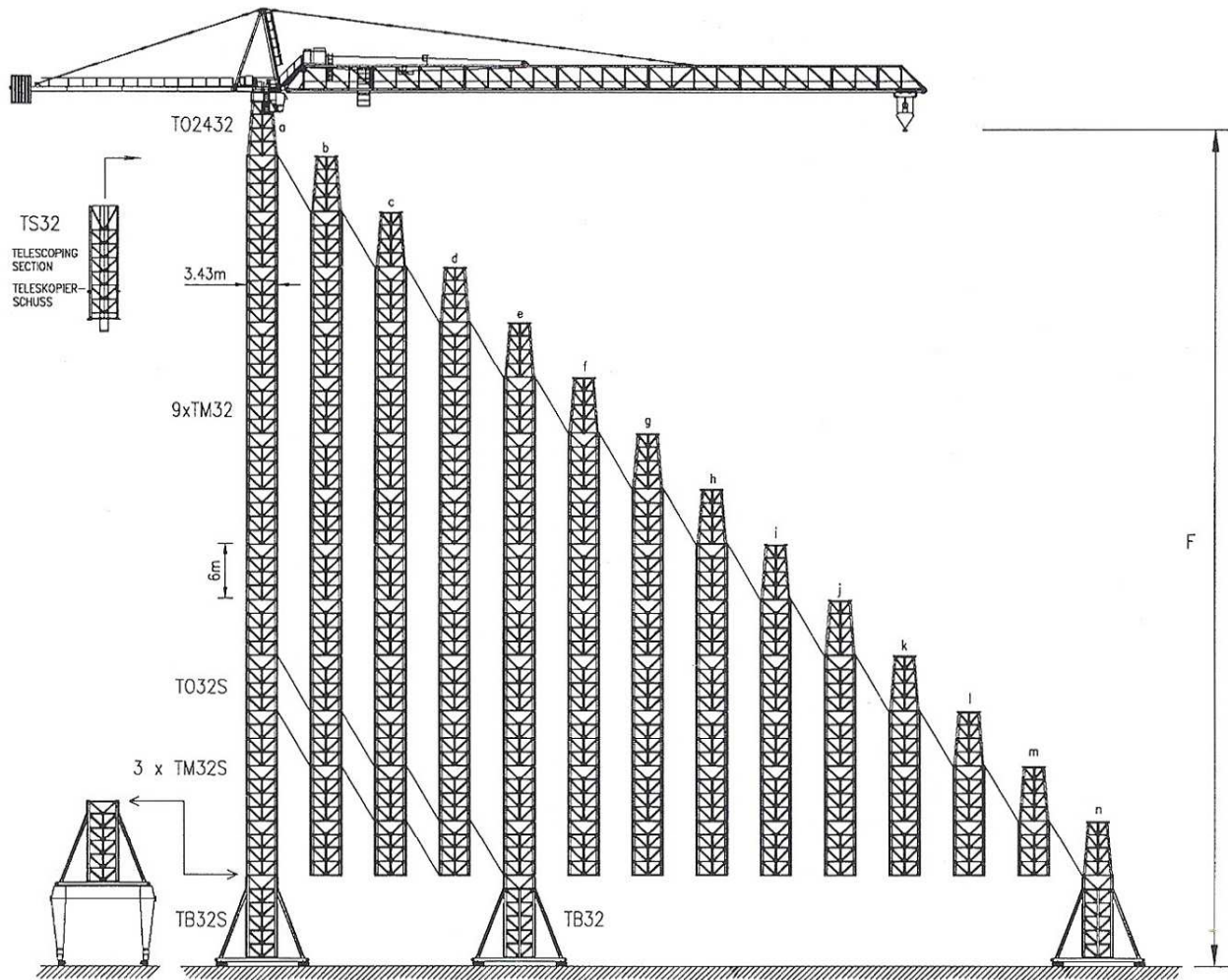
B x B x H	F _{EXP}	m	a	b	c	d	e	f	g	h	i	j	k	l	m	n
	H=1.8m	B	10.7	10.1	9.6	9.0	8.5	7.9	7.4	7.3	7.1	7.0	6.9	6.8	6.7	
	FOUNDATION WEIGHT FUNDAMENTSGEWICHT	ton	495	441	398	350	312	270	237	230	218	212	206	200	194	

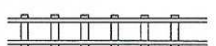


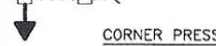
JIB CONFIGURATION

AUSLEGER KONFIGURATION

JIB LENGTH AUSLEGER-LÄNGE	INNER SECTION	EXTRA HEAVY SECTION	HEAVY SECTION	EYE SECTION	10m LIGHT SECTION	5m LIGHT SECTION	TIP SECTION	FRONT STAYS ÄUSSERE ZUGSTANG					COUNTERWEIGHT GEGENGEWICHT									REAR STAYS HINTERE ZUGSTANG					
								510 mm	6170 mm	6300 mm	3560 mm	3470 mm	15 m			21 m			27 m			1200 mm	6300 mm	5230 mm	5560 mm	6400 mm	
													3t	1t	TOTAL	3t	1t	TOTAL	3t	1t	TOTAL						
70 m	1	1	2	1	1	1	1	1	1	5	1	1	[Hatched Area]									27m	1	1	1	1	1
65 m	1	1	2	1	1	0	1	1	1	5	1	1										27m	1	1	1	1	1
60 m	1	1	2	1	0	1	1	1	1	5	1	1	[Hatched Area]									27m	1	1	1	0	1
55 m	1	1	1	1	1	0	1	1	1	4	0	1										27m	1	1	1	0	1
50 m	1	1	1	1	0	1	1	1	1	4	0	1	[Hatched Area]									21m	1	1	0	0	1
45 m	1	1	1	1	0	0	1	1	1	4	0	1										21m	1	1	0	0	1
40 m	1	1	0	1	0	1	1	1	1	3	0	0	[Hatched Area]									15m	1	1	0	0	1
35 m	1	1	0	1	0	0	1	1	1	3	0	0										15m	1	1	0	0	1
30 m	1	1	0	1	0	0	0	1	1	3	0	0	[Hatched Area]									15m	1	1	0	0	1
																						15m	1	1	0	0	1

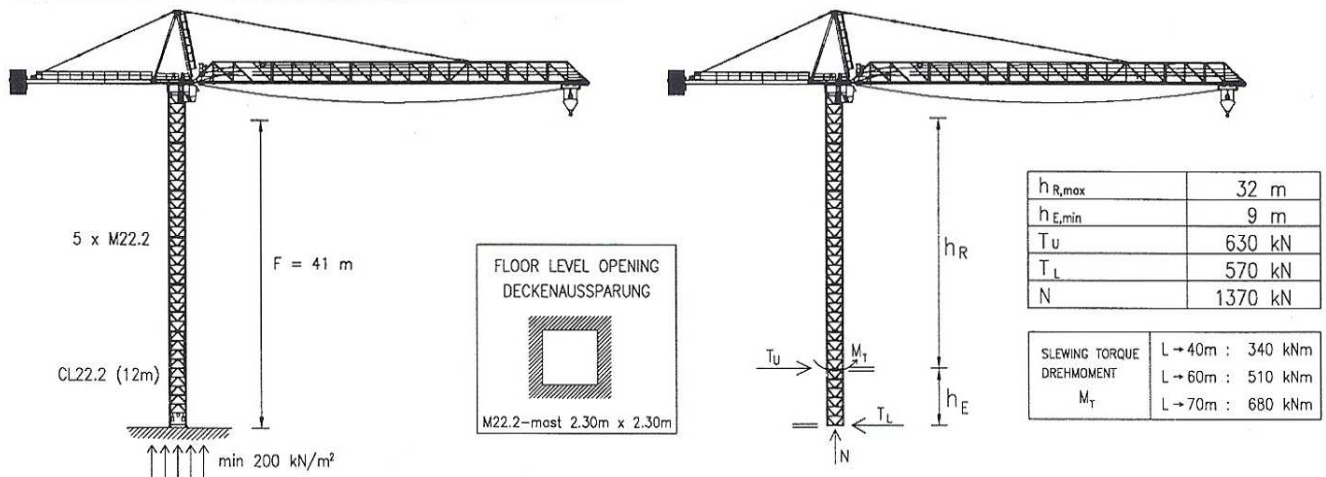
K-400D ON RAILS / AUF SCHIENEN



			a	b	c	d	e	f	g	h	i	j	k	l	m	n
HOOK HEIGHT / HAKENHÖHE	F	m	92	86	80	74	68	62	56	50	44	38	32	26	20	14
	RAIL GAUGE SPURWEITE	m	9													
	BALLAST	t	140	122	106	91	77	64	53	44	40	40	40	40	40	40
	PARKING FOUNDATIONS * PARKIERUNGSFUNDAMENTE x4	t	40	30	21	14	6	0	0	0	0	0	0	0	0	0
	CORNER PRESSURE ECKDRUCK	kN	1850	1920	1720	1620	1470	1340	1230	1120	1030	960	910	860	820	780
	OUT OF SERVICE AUSSER BETRIEB	kN	2720	2460	2230	1980	1670	1390	1120	910	780	670	600	580	570	560

* THE WEIGHT EQUAL TO THE PARKING FOUNDATION BLOCKS MAY BE PLACED ON THE CROSS AS BALLAST UP TO TOTAL 150 t
 DAS GEWICHT DER PARKIERUNGSFUNDAMENTE DARF AUF DEM KREUTZ ALS BALLAST (MAX TOTAL 150 t) GELEGEN WERDEN

K-400D CLIMBER / KLETTERKRAN



	3 x 400 V - 50 Hz	CONTROL VOLTAGE / STEUER SPANNUNG
	3 x 415 V - 50 Hz	
	3 x 460 V - 60 Hz	
	24 VDC - 220 VAC	

	HOIST WINCH / HUBWERK	81 kW
	POWER CONSUMPTION / STROMVERBRAUCH	145 kVA
	FUSE / SICHERUNG	225 Amps
POWER CABLE	0-100 m 100-175 m 175-250 m	4G95
HAUPTKABEL		4G95
		4G120

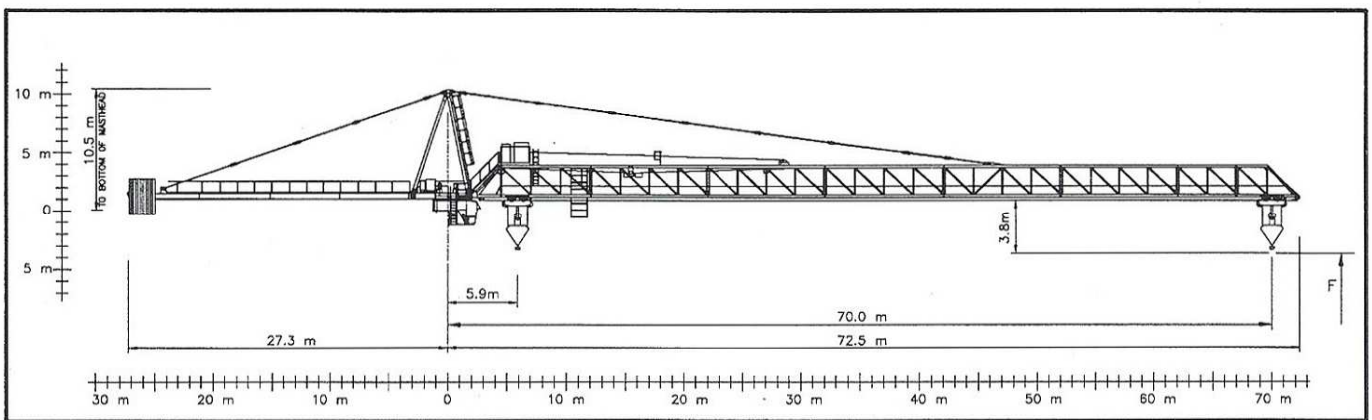
	0-4000 kg	0 - 80 m/min
	0-10000 kg	0 - 40 m/min

	0-8000 kg	0 - 40 m/min
	0-20000 kg	0 - 20 m/min

	L → 40 m	2 x 4 kW	0 - 0.6 RPM
	L → 60 m	3 x 4 kW	
	L → 70 m	4 x 4 kW	
	20 t	10 kW (STANDARD)	0 - 40 m/min
	20 t	22 kW	0 - 60 m/min
	F _{max}	8 x 5 kW	16 m/min

HOIST ROPE	ø22 mm - FILL FACTOR 0.65 - 1770 MP _a BREAKING STRESS
HUB-SEIL	81 kW HOIST WINCH
	500 m
	>500 m *
TROLLEY ROPE	ø12/15 mm
LAUFKATZE-SEIL	

* CONSULT KGC A/S - NEHMEN SIE MIT KGC A/S KONTAKT AUF



APPROX. ERECTION WEIGHTS
UNGEFÄHRE MONTAGEGEWICHTE

L	kg	POS	ITEM	kg	POS	ITEM	kg
70	31400	1	FRONT STAYS	3600	9	CABIN K1	1000
65	30250	2	REAR STAYS	2080	10	TO2432	7100
60	29220	3	TOP TOWER	3720	11	TM32	4400
55	27160	4	OUTER SECTION	1480	12	TO32S	4700
50	26100	5	MIDDLE SECTION	1480	13	TM32S	5650
45	24900	6	INNER SECTION	1530	14	TB32	7130
40	23060	7	SLEWING	6830	15	TB32S	9030
35	21890	8	MAST HEAD	4070	16	N32(S)	3600

EXTRA EQUIPMENT AVAILABLE
WALL TIE FRAMES, CABLE DRUMS, CURVE RUNNING AND 90° TURN BOGIES, ELEVATOR, FLOOD LIGHTING

ZUSÄTZLICHE AUSRÜSTUNG VERFÜGBAR
EINSPANNRAHMEN, KABELTROMMEL, KURVENFAHRENDE UND 90° DREHSCHEMEL, AUFZUG, SCHEINWERFER

THE DESIGN AND TECHNICAL SPECIFICATIONS GIVEN ARE APPLICABLE TO THE STANDARD MACHINE OF CRANE K-400D. MODIFICATIONS ACCORDING TO SPECIAL REQUIREMENTS REGARDING FOR EXAMPLE HOOK HEIGHT, JIB LENGTH, RAIL GAUGE, ETC.. ARE AVAILABLE. PLEASE CONTACT KGC A/S

DIE KONSTRUKTIONS- UND TECHNISCHE DATEN BEZIEHEN SICH AUF DIE STANDARD AUSFÜHRUNG DES KRANTYPS K-400D. INDIVIDUELLE FORDERUNGEN Z.B AN HAKENHÖHE, AUSLEGERLÄNGE, SPURWEITE USW. KÖNNEN BERÜCKSICHTIGT WERDEN. NEHMEN SIE MIT KGC A/S KONTAKT AUF

CONVERSION OF THE UNITS FOR FORCES	10 N = 1 kg	SUBJECT TO ALTERATIONS	DATA SHEET	K-400D
UMRECHNUNG DER EINHEITEN FÜR KRÄFTE	10 kN = 1 ton	ÄNDERUNGEN VORBEHALTEN	DATABLATT	940501