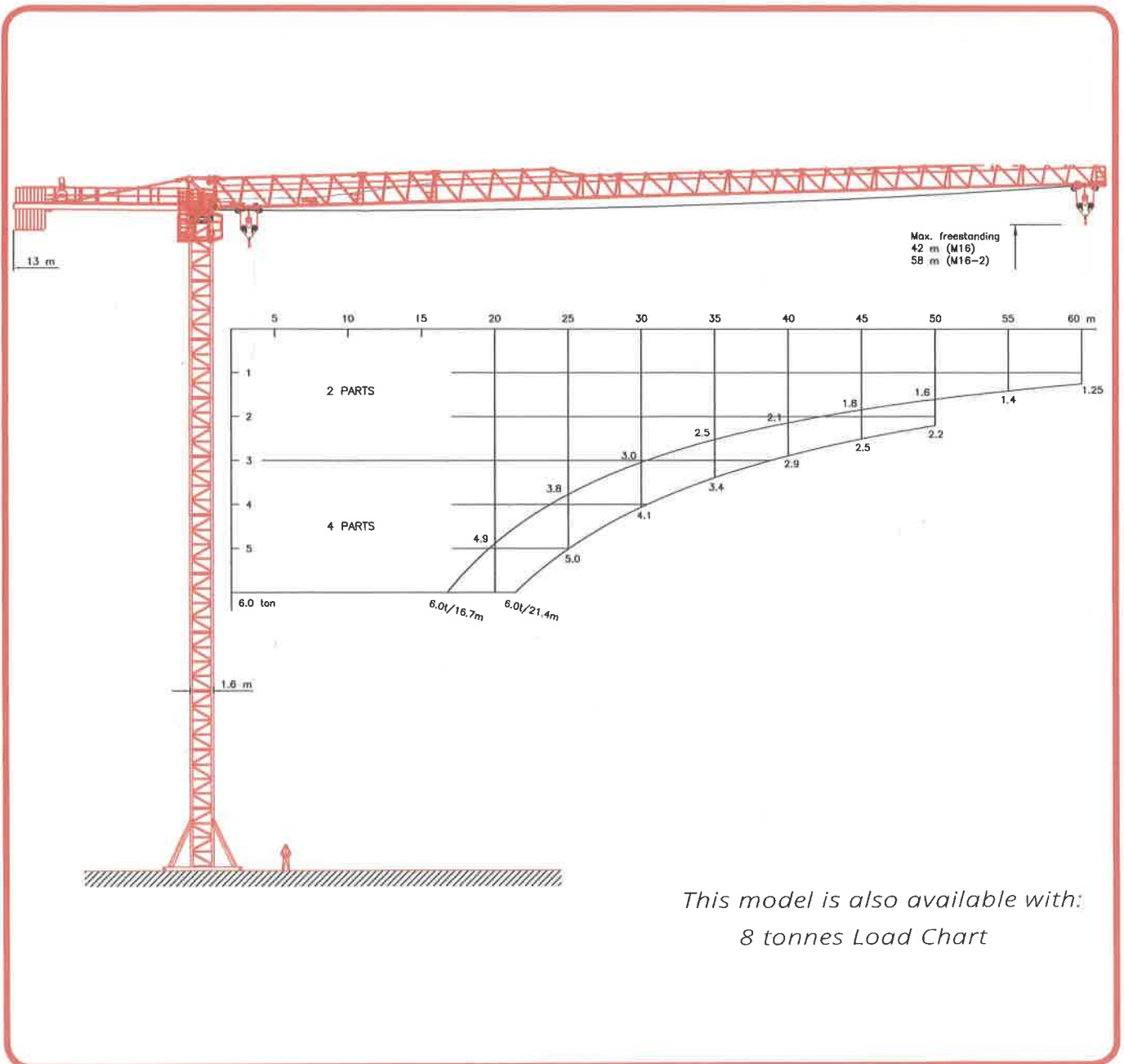




**KRØLL CRANES**



*This model is also available with:  
8 tonnes Load Chart*

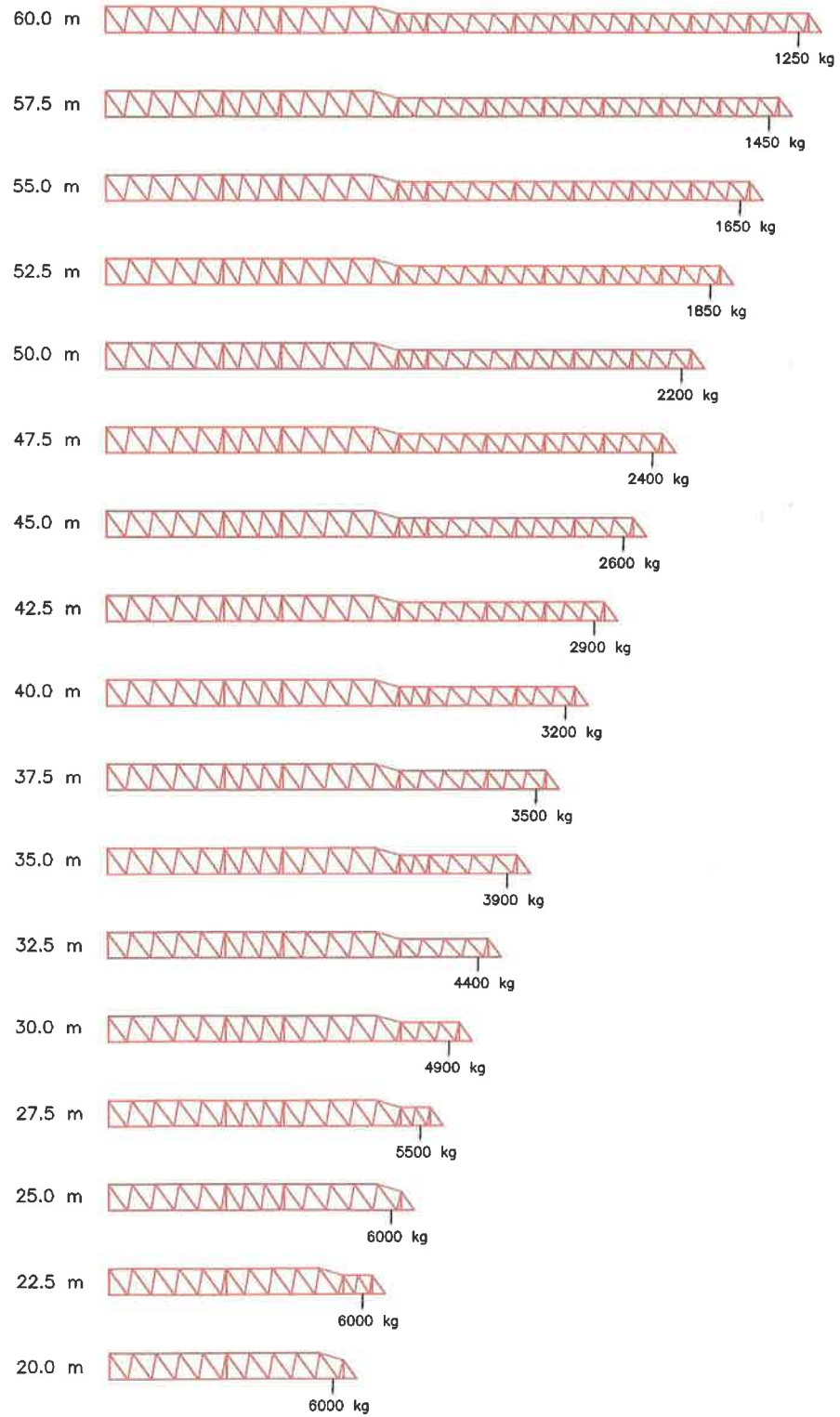
EN 14439:2009



**FLAT TOP  
TOWER CRANE**

**K130F**




6 tonnes Max Load






# LOAD CHARTS


Radius	Jib length		Jib length		Jib length		Jib length		Jib length		Jib length		Jib length		Jib length	
	60.0 m		55.0 m		50.0 m		45.0 m		40.0 m		35.0 m		30.0 m		25.0 m	
	4 parts	2 parts	4 parts	2 parts	4 parts	2 parts	4 parts	2 parts	4 parts	2 parts	4 parts	2 parts	4 parts	2 parts	4 parts	2 parts
[m]	[kg]	[kg]	[kg]	[kg]	[kg]	[kg]	[kg]	[kg]	[kg]	[kg]	[kg]	[kg]	[kg]	[kg]	[kg]	[kg]
14.0	6,000	3,000	6,000	3,000	6,000	3,000	6,000	3,000	6,000	3,000	6,000	3,000	6,000	3,000	6,000	3,000
15.0	6,000	3,000	6,000	3,000	6,000	3,000	6,000	3,000	6,000	3,000	6,000	3,000	6,000	3,000	6,000	3,000
16.0	6,000	3,000	6,000	3,000	6,000	3,000	6,000	3,000	6,000	3,000	6,000	3,000	6,000	3,000	6,000	3,000
17.0	5,890	3,000	6,000	3,000	6,000	3,000	6,000	3,000	6,000	3,000	6,000	3,000	6,000	3,000	6,000	3,000
18.0	5,510	3,000	6,000	3,000	6,000	3,000	6,000	3,000	6,000	3,000	6,000	3,000	6,000	3,000	6,000	3,000
19.0	5,180	3,000	5,900	3,000	6,000	3,000	6,000	3,000	6,000	3,000	6,000	3,000	6,000	3,000	6,000	3,000
20.0	4,880	3,000	5,560	3,000	6,000	3,000	6,000	3,000	6,000	3,000	6,000	3,000	6,000	3,000	6,000	3,000
21.0	4,610	3,000	5,260	3,000	6,000	3,000	6,000	3,000	6,000	3,000	6,000	3,000	6,000	3,000	6,000	3,000
22.0	4,370	3,000	4,990	3,000	5,770	3,000	5,970	3,000	6,000	3,000	6,000	3,000	6,000	3,000	6,000	3,000
23.0	4,150	3,000	4,740	3,000	5,480	3,000	5,680	3,000	6,000	3,000	6,000	3,000	6,000	3,000	6,000	3,000
23.4	4,070	3,000	4,650	3,000	5,380	3,000	5,570	3,000	5,920	3,000	6,000	3,000	6,000	3,000	6,000	3,000
24.0	3,950	3,000	4,510	3,000	5,220	3,000	5,410	3,000	5,760	3,000	5,990	3,000	6,000	3,000	6,000	3,000
25.0	3,770	3,000	4,310	3,000	4,990	3,000	5,160	3,000	5,500	3,000	5,720	3,000	6,000	3,000	6,000	3,000
26.0	3,600	3,000	4,120	3,000	4,770	3,000	4,940	3,000	5,260	3,000	5,480	3,000	5,760	3,000		
27.0	3,440	3,000	3,940	3,000	4,570	3,000	4,730	3,000	5,040	3,000	5,250	3,000	5,520	3,000		
28.0	3,290	3,000	3,780	3,000	4,380	3,000	4,540	3,000	4,830	3,000	5,030	3,000	5,300	3,000		
29.0	3,160	3,000	3,620	3,000	4,210	3,000	4,360	3,000	4,640	3,000	4,840	3,000	5,090	3,000		
30.0	3,030	3,000	3,480	3,000	4,040	3,000	4,190	3,000	4,470	3,000	4,650	3,000	4,900	3,000		
31.0	2,920	2,920	3,350	3,000	3,890	3,000	4,040	3,000	4,300	3,000	4,480	3,000				
32.0	2,810	2,810	3,230	3,000	3,750	3,000	3,890	3,000	4,150	3,000	4,320	3,000				
33.0	2,710	2,710	3,110	3,000	3,620	3,000	3,750	3,000	4,000	3,000	4,170	3,000				
34.0	2,610	2,610	3,000	3,000	3,500	3,000	3,630	3,000	3,870	3,000	4,030	3,000				
35.0	2,520	2,520	2,900	2,900	3,380	3,000	3,500	3,000	3,740	3,000	3,900	3,000				
36.0	2,430	2,430	2,800	2,800	3,270	3,000	3,390	3,000	3,620	3,000						
37.0	2,350	2,350	2,710	2,710	3,170	3,000	3,280	3,000	3,510	3,000						
38.0	2,280	2,280	2,630	2,630	3,070	3,000	3,180	3,000	3,400	3,000						
39.0	2,200	2,200	2,540	2,540	2,970	2,970	3,090	3,000	3,300	3,000						
40.0	2,130	2,130	2,470	2,470	2,890	2,890	2,990	2,990	3,200	3,000						
41.0	2,070	2,070	2,390	2,390	2,800	2,800	2,910	2,910								
42.0	2,010	2,010	2,320	2,320	2,720	2,720	2,830	2,830								
43.0	1,950	1,950	2,260	2,260	2,650	2,650	2,750	2,750								
44.0	1,890	1,890	2,190	2,190	2,570	2,570	2,670	2,670								
45.0	1,840	1,840	2,130	2,130	2,500	2,500	2,600	2,600								
46.0	1,790	1,790	2,080	2,080	2,440	2,440										
47.0	1,740	1,740	2,020	2,020	2,370	2,370										
48.0	1,690	1,690	1,970	1,970	2,310	2,310										
49.0	1,650	1,650	1,920	1,920	2,260	2,260										
50.0	1,600	1,600	1,870	1,870	2,200	2,200										
51.0	1,560	1,560	1,820	1,820												
52.0	1,520	1,520	1,780	1,780												
53.0	1,480	1,480	1,730	1,730												
54.0	1,450	1,450	1,690	1,690												
55.0	1,410	1,410	1,650	1,650												
56.0	1,380	1,380														
57.0	1,340	1,340														
58.0	1,310	1,310														
59.0	1,280	1,280														
60.0	1,250	1,250														



# DRIVES



		<b>HOIST WINCH</b>	
		<b>Motor</b> 22 kW	
<b>HOIST SPEEDS</b>			
	<b>2-Parts</b>	0 - 0.8 t 0.8 - 1.5 t 1.5 - 3.0 t	100 m/min 70 m/min 38 m/min
	<b>4-Parts</b>	0 - 1.6 t 1.6 - 3.0 t 3.0 - 6.0 t	50 m/min 35 m/min 19 m/min

	<b>HOIST DRUM</b>
	<b>Capacity</b> 600 m / 7 layers
<b>HOIST WIRE</b>	
<b>Diameter</b>	12 mm
<b>Fill Factor</b>	0.65
<b>Breaking Stress</b>	1770 N/mm <sup>2</sup>

		<b>TROLLEY WINCH</b>	
		<b>Motor</b> 4 kW	
<b>TROLLEY SPEEDS</b>			
		0 - 6.0 t	0 - 70 m/min


	<b>TROLLEY DRUM</b>
	<b>Capacity</b> 60m / 1 Layer
<b>TROLLEY WIRE</b>	
<b>Diameter</b>	8 mm
<b>Fill Factor</b>	0.65
<b>Breaking Stress</b>	1770 N/mm <sup>2</sup>


		<b>SLEW DRIVE</b>	
		<b>Motor</b> 1 x 7 kW	
<b>SLEW SPEEDS</b>			
		0 - 6.0 t	0 - 0.7 rpm

		<b>UNDERCARRIAGE</b>	
		<b>Motor</b> 2 x 5.5kW	
<b>TRAVEL SPEEDS</b>			
		0 - 6.0 t	0 - 20 m/min

All specifications shown in the tables are for the standard version of K130F. For special requirements regarding load charts or drive speeds, please contact Kröll Cranes A/S.

Data is subject to alteration.

	<b>POWER</b>
	<b>Supply</b> 400 - 480 V, 50/60 Hz
	<b>Consumption</b> 35 kVA
	<b>Main Fuse</b> 50 A
<b>Recommended Generator Size</b>	50 kVA

	<b>SUPPLY CABLE</b>	
	<b>Cable Length</b>	<b>Cable Type</b>
	0 - 100m	4G10
	100 - 175m	4G10
175 - 250m	4G16	