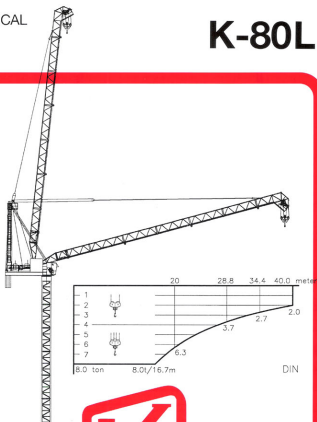


TECHNICAL
DATA

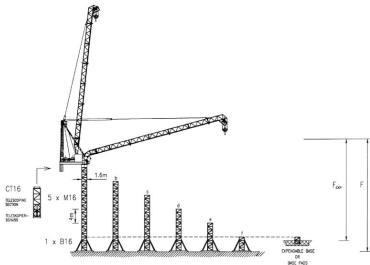
K-80L






KRØLL CRANES A/S

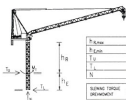
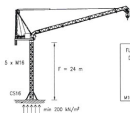
Nordkranvej 2 · DK-3540 Lyngby · Denmark · Phone: +45 42 18 74 00 · Fax: +45 42 18 88 07 · Telex: 42175 kroll dk

K-80L STATIONARY / STATIONÄR

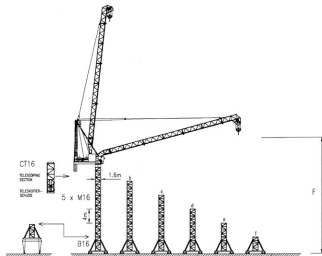




			a	b	c	d	e	f
HOOK HEIGHT / HAKENHÖHE	F	m	3.3	2.9	2.5	2.1	1.7	1.3
 BALLAST CORNER PRESSURE / ECKDRUCK 6m	IN SERVICE / IM BETRIEB	kN	490	460	430	400	370	350
	OUT OF SERVICE / AUSSER BETRIEB	kN	450	360	280	240	210	200
	BALLAST	t	49	38	29	21	15	15
 B x B x H H=1.0m min 200 kN/m ²	F	m	3.3	2.9	2.5	2.1	1.7	1.3
	B	m	7.0	7.0	7.0	7.0	7.0	7.0
	FOUNDATION WEIGHT / FUNDAMENTSGEWICHT	ton	117	117	117	117	117	117
 B x B x H H=1.4m min 200 kN/m ²	F _{Exp}	m	3.0	2.6	2.2	1.8	1.4	
	B	m	5.5	5.2	5.1	5.0	5.0	
	FOUNDATION WEIGHT / FUNDAMENTSGEWICHT	ton	102	91	87	84	84	

K-80L CLIMBER / KLETTERKRAN




h _{max}	17 m
h _{min}	7 m
T _{max}	300 kN
T _y	270 kN
N	560 kN
SWING TORQUE / DREHMOMENT	M _s 110 kNm



HOOK HEIGHT / HAKENHÖHE	F	m	a	b	c	d	e	f
 I	RAL GALV. SPANWEGE		6					
 PARKING FOUNDATIONS FUNDIERUNGSFUNDAMENTE * x4	BALLAST	t	46	34	26	17	15	15
		t	0	0	0	0	0	0
	IN SERVICE IM BETRIEB	kN	500	460	430	400	370	350
CORNER PRESSURE ECKDRUCK	OUT OF SERVICE AUßER BETRIEB	kN	470	370	300	260	220	210


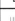


	3 x 400 V - 50 Hz 3 x 415 V - 50 Hz 3 x 480 V - 50 Hz	CONTROL VOLTAGE / STEUER SPANNUNG	24 VDC - 220 VAC
--	---	-----------------------------------	------------------

	1 x 5 kW	0 - 0.7 RPM
--	----------	-------------

	HOST WINCH / HUBWERK	55 kW
	POWER CONSUMPTION / STROMVERBRAUCH	150 kW
		160 Amps
FORCE CABLE / KABEL	0-100 m	4G70
HÄUFRABEL	100-175 m	4G70
	175-250 m	4G85

	15°-84°	55 kW	STEPLESS STUFENLOS 1.5 m/s
---	---------	-------	----------------------------------

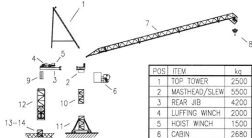
	4 x 3 kW	25 m/min
---	----------	----------

	0-2000 kg	0 - 110 m/min
	0-4000 kg	0 - 80 m/min
	0-6000 kg	0 - 55 m/min
	0-8000 kg	0 - 40 m/min

HOST ROPE / HUB-SEIL	ø15 mm - FILL FACTOR 0.85 - 1770 MPa BREAKING STRESS	BRUCHSPANNUNG
	55 kW HOST WINCH	
	500 m	
	>500 m *	
LIFTING WIRE / DÄNDIGSEL	ø22 mm - FILL FACTOR 0.85 - 1770 MPa BREAKING STRESS	

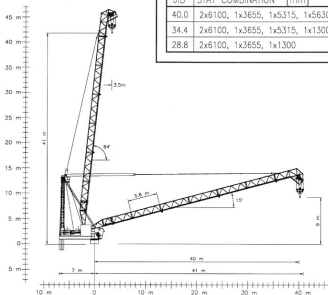
* CONSULT KDC A/S - NÄHREN SE MIT KDC A/S KONTAKT AUF

APPROX. ERECTION WEIGHTS
UNGEFÄHRE MONTAGEGEWICHTE



POS	ITEM	kg
1	TOP TOWER	2500
2	MASTHEAD/SLEW	5500
3	REAR JIB	4200
4	LUFFING WINCH	2000
5	HOIST WINCH	1500
6	CABIN	2680
7	JIB	5100
8	HOOK	415

POS	ITEM	kg
9	COUNTERWEIGHT	8000
10	M16	1680
11	B16	2200
12	CT16	5700
13	N16 (2m)	900
14	BASEPADS(4)	888
15		
16		



JIB	STAY COMBINATION [mm]
40.0	2x6100, 1x3655, 1x5315, 1x5630, 1x1300
34.4	2x6100, 1x3655, 1x5315, 1x1300
28.8	2x6100, 1x3655, 1x1300

EXTRA EQUIPMENT AVAILABLE

WALL TIE FRAMES, CABLE DRUMS, CURVE RUNNING AND 90° TURN RIGS, ELEVATOR, FLOOD LIGHTING

ZUSÄTZLICHE AUSRÜSTUNG VERFÜGBAR

DRUCKSTÄBEN, KABELTROMMELN, KURVENFAHRENDE UND 90° DREHSCHLEIFEN, AUFZUG, SCHAFFNERLEISTEN

THE DESIGN AND TECHNICAL SPECIFICATIONS GIVEN ARE APPLICABLE TO THE STANDARD MACHINE OF CRANE K-BOL. MODIFICATIONS ACCORDING TO SPECIAL REQUIREMENTS REGARDING FOR EXAMPLE HOOK HEIGHT, JIB LENGTH, RAIL GAUGE, ETC. ARE AVAILABLE. PLEASE CONTACT KGC A/S

DIE KONSTRUKTIONS- UND TECHNISCHEN DATEN BEZIEHEN SICH AUF DIE STANDARDAUSFÜHRUNG DES KRANTYPS K-BOL. INDIVIDUELLE FORDERUNGEN Z.B. AN HAKENHÖHE, AUSLEGERLÄNGE, SPURWEITE USW. KÖNNEN BERÜCKSICHTIGT WERDEN. NIMMEN SIE MIT KGC A/S KONTAKT AUF

CONVERSION OF THE UNITS FOR FORCES
UMRECHNUNG DER EINHEITEN FÜR KRÄFTE

10 N = 1 kg
10 kN = 1 ton

SUBJECT TO ALTERATIONS
ÄNDERUNGEN VORBEHALTEN

DATA SHEET
DATABLATT

K-BOL
940501