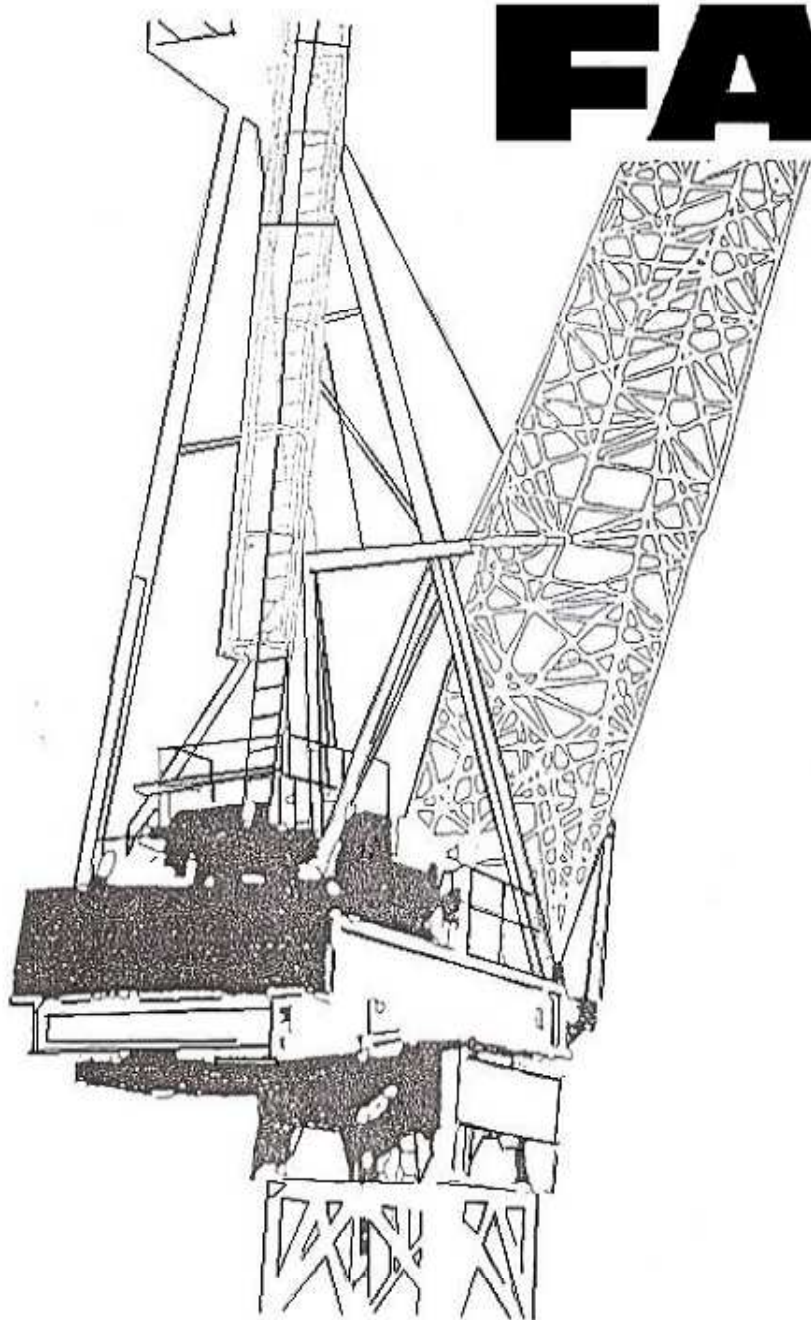


FAVELLE

FAVCO

the Cranemakers



M310D TOWER CRANE

FOR OVER 30 YEARS, AUSTRALIAN MADE FAVELLE FAVCO CRANES HAVE BEEN AT THE LEADING EDGE OF HIGH RISE CONSTRUCTION AROUND THE WORLD.

FIRST IN AUSTRALIA, THEN AT THE WORLD TRADE CENTRE IN NEW YORK IN 1967, TO SINGAPORE, TAIWAN AND THE UK IN 1990, FAVELLE FAVCO CRANES HAVE GUARANTEED ONE VITAL EQUATION: POWER + SPEED + RELIABILITY = PERFORMANCE.

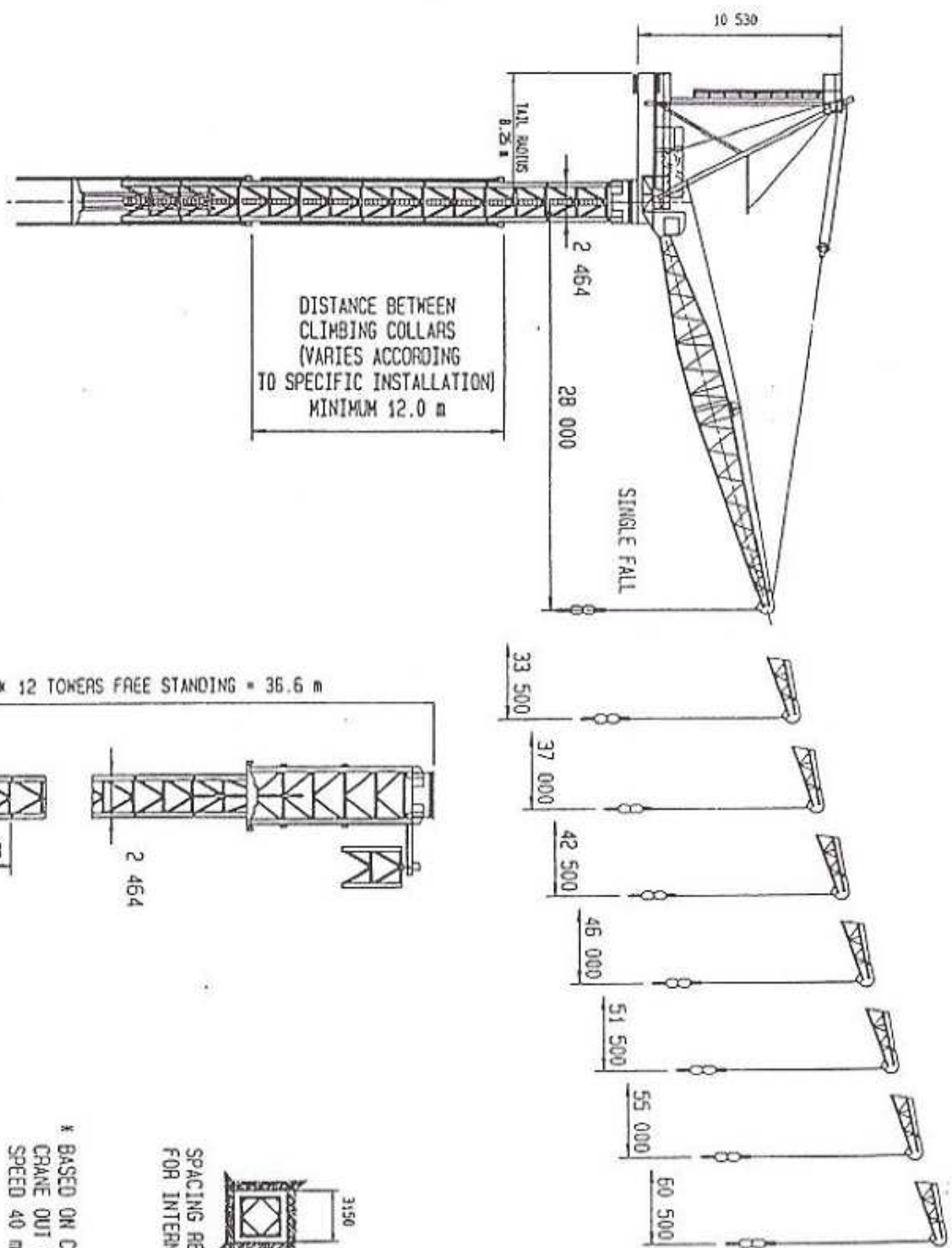
FAVELLE FAVCO CRANES ARE DESIGNED AND MANUFACTURED TO EXACTING SPECIFICATIONS TO PROVIDE DURABILITY, RELIABILITY, HIGH PERFORMANCE, AND SAFETY WHICH IS SECOND TO NONE.

THEY COMBINE ADVANCED TECHNOLOGY WITH STATE OF THE ART COMPUTER DESIGN AND OVER 30 YEARS OF INTERNATIONAL EXPERIENCE.

WHEN AUSTRALIAN AND INTERNATIONAL PROJECTS CALL FOR A CRANE WHICH CAN MANAGE A MONTHLY LIFT CAPACITY WELL BEYOND CONVENTIONAL LIMITS, THEY CONSULT FAVELLE FAVCO.

THE SUCCESS OF FAVELLE FAVCO CRANES HAS ALWAYS BEEN PERFORMANCE CAPABILITY, WHICH IS FAR BEYOND EUROPEAN AND JAPANESE COMPETITORS.

THE ESSENCE OF A FAVELLE FAVCO CRANE'S SUPERIORITY, IS ITS POWER PLANT.



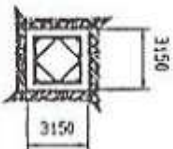
INTERNAL CLIMBING

FOUNDATION LEVEL

x 12 TOWERS FREE STANDING = 36.6 m

EXTERNAL CLIMBING

SPACING REQUIRED FOR INTERNAL CLIMBING



* BASED ON CONDITIONS:
CRANE OUT OF SERVICE WITH MAX WIND
SPEED 40 m/s. USING TYPE 1000 TOWERS

F/ELLE
FAVCO

FAVELLE FAVCO CRANES PTY. LTD.
INCORPORATED IN N.S.W.

M310D TOWER CRANE

